

***Thrips palmi* diagnostic images.**

To be used in conjunction with the IPPC *Thrips palmi* diagnostic protocol

Acknowledgement: all images were taken by Mrs Desley Tree, Collection Manager, Insect Collection, Plant Science - Industry Services, Primary Industries and Fisheries, Queensland Department of Employment, Economic Development and Innovation

Figure 5.1 antenna

7 segments

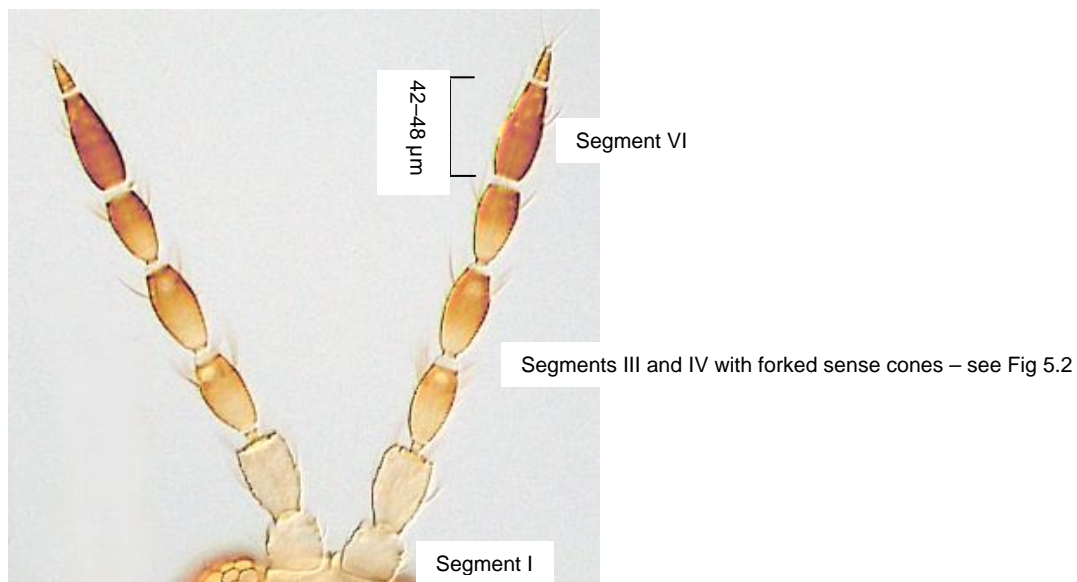


Figure 5.2 antenna

Segment IV

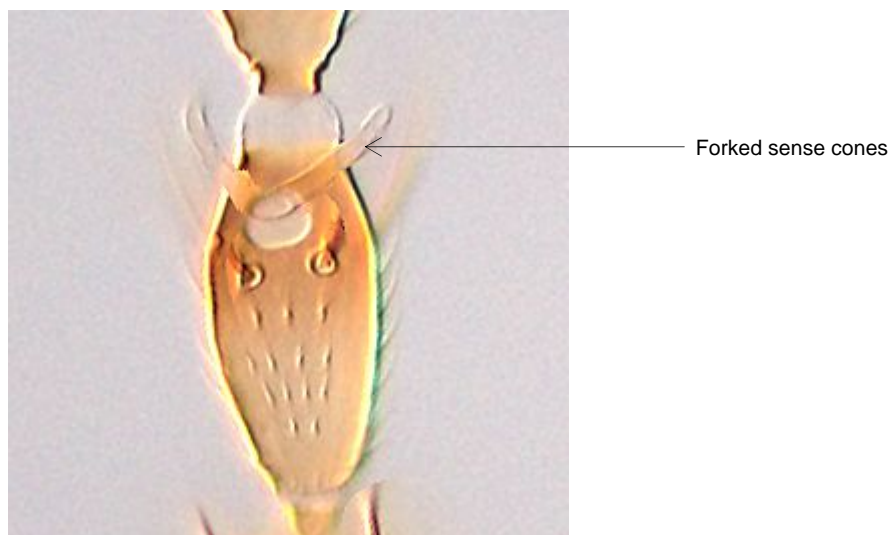


Figure 5.3 head
with 2 pairs of ocellar setae (pair I missing). Ocellar setae pair III situated outside ocellar triangle

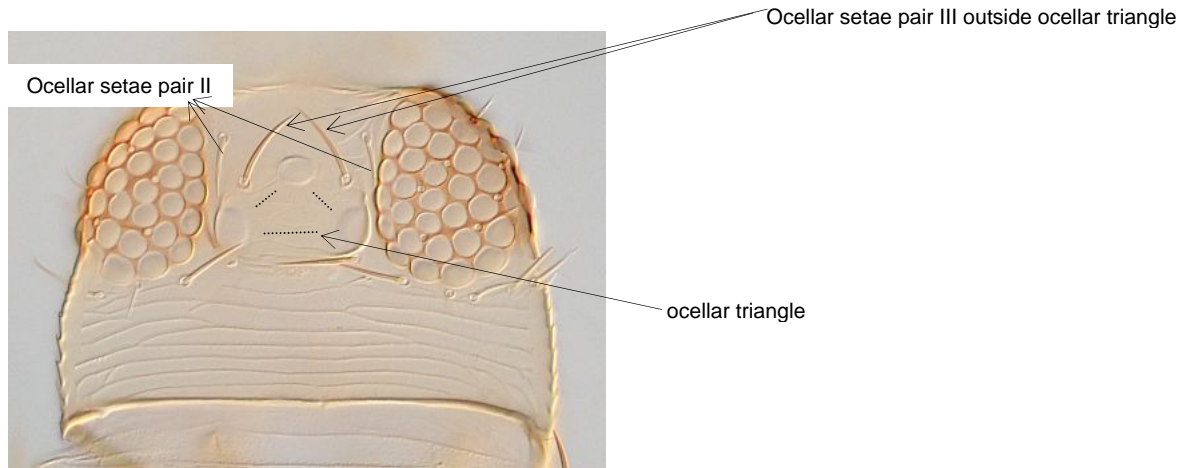


Figure 5.4 pronotum
2 pairs of major posteroangular setae

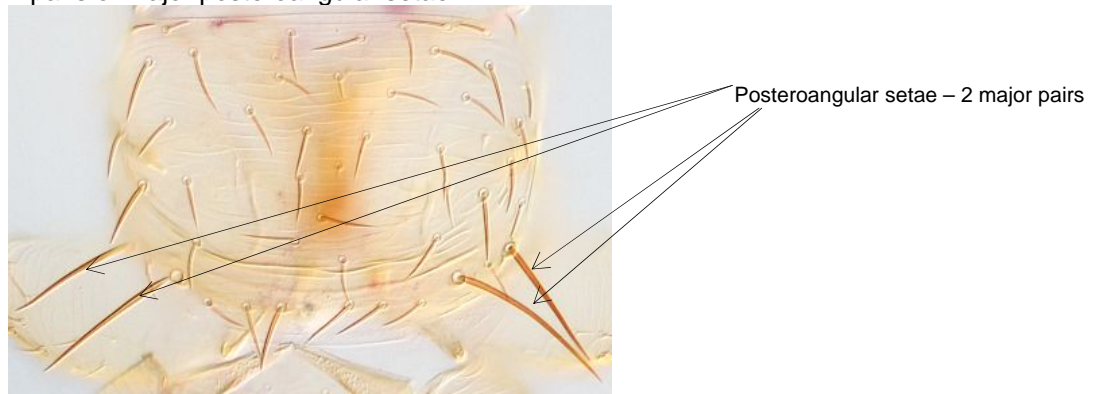


Figure 5.5 Forewing
First vein – 3 setae with gaps in distal half

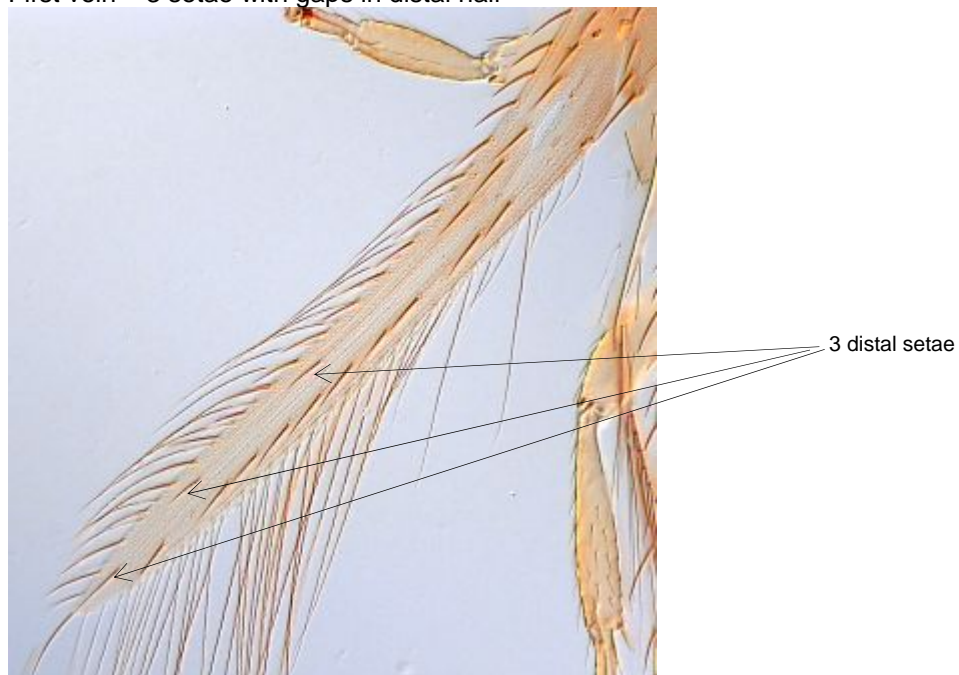
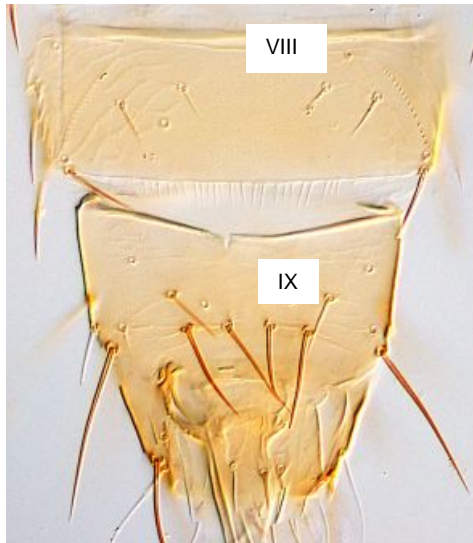


Fig 5.6 Abdominal tergite VIII

Ctenidia posteromesad to the spiracle; posteromarginal comb complete



Male abdominal tergites VIII & IX, dorsal



spiracle

VIII

ctenidium

Posteromarginal comb complete

Figure 5.7 Metascutum

Variations in sculpture, campaniform sensilla

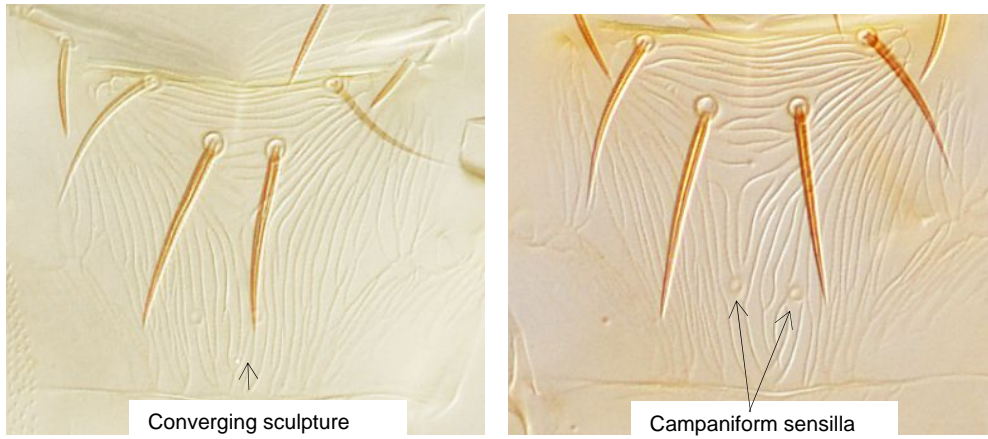


Figure 5.8 Abdominal pleurotergites

Microtrichia and discal setae absent



Figure 5.9 Abdominal tergite II

4 lateral marginal setae

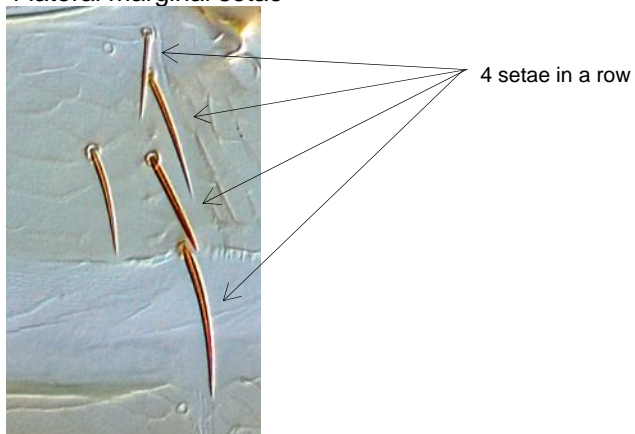


Figure 5.10 tergites II–IV, female
Setae S2 about same size as setae S3

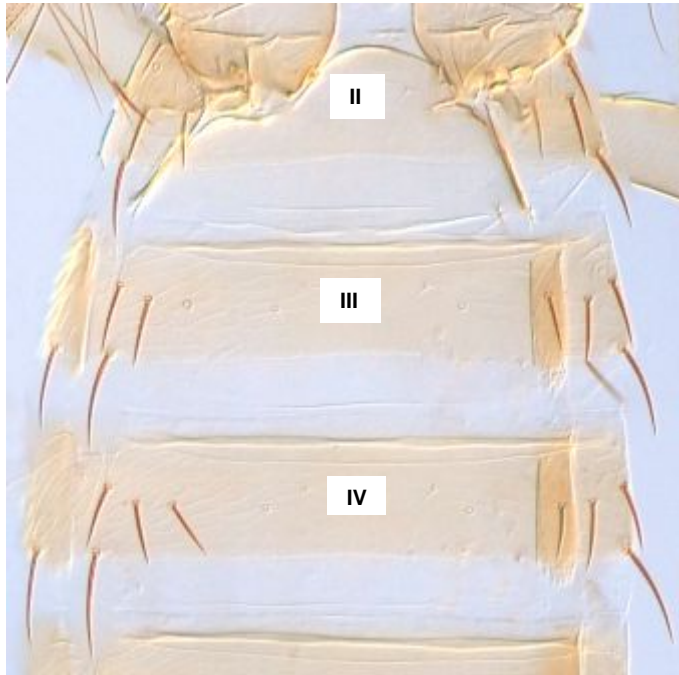
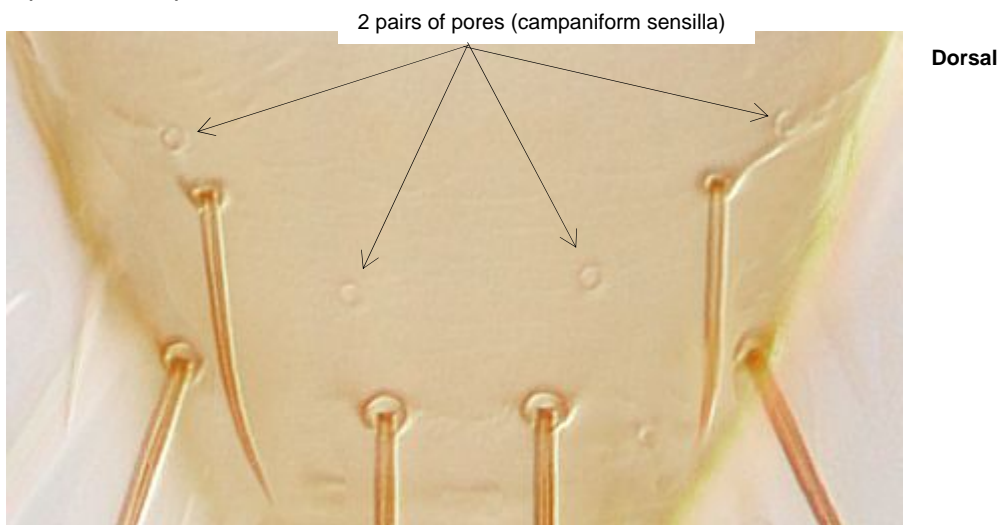


Figure 5.11 Abdominal tergite IX
2 pairs of campaniform sensilla



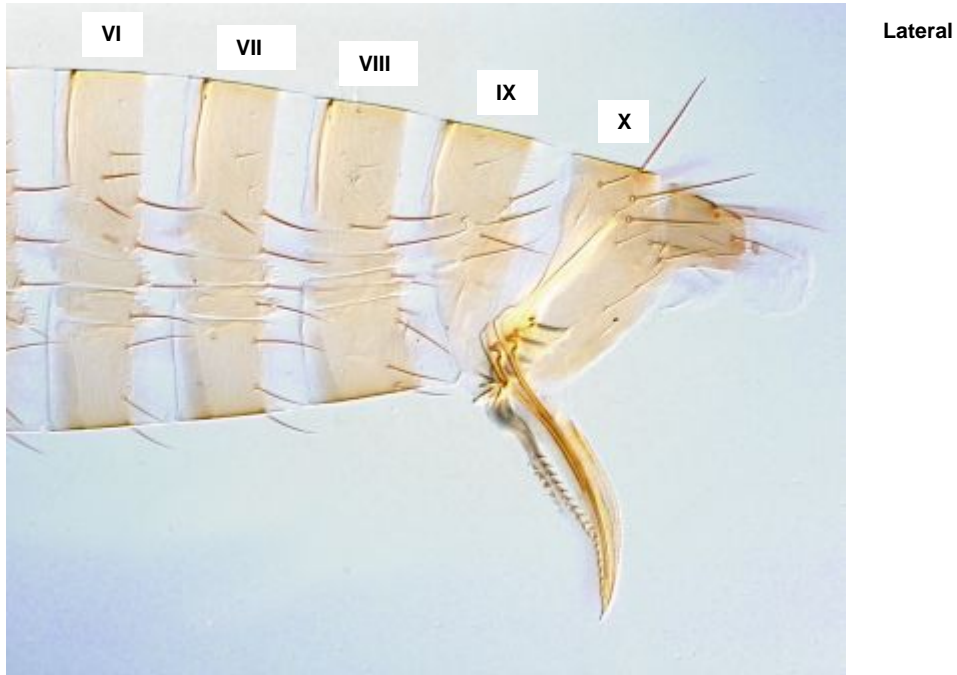
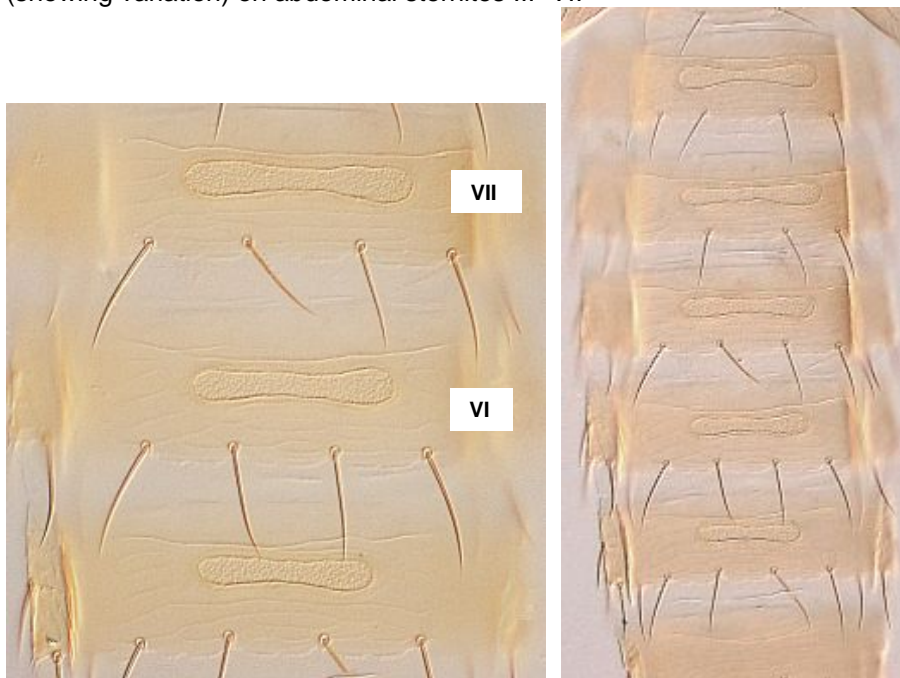


Figure 5.12 Male glandular areas
(showing variation) on abdominal sternites III–VII



Additional diagnostic reference

CD reference "Thrips of California", now available free online, which included updated collection and processing methods as well as a lucid key to diagnostics for many thrips species . http://keys.lucidcentral.org/keys/v3/thrips_of_california/Thrips_of_California.html