



Pacific
Community
Communauté
du Pacifique

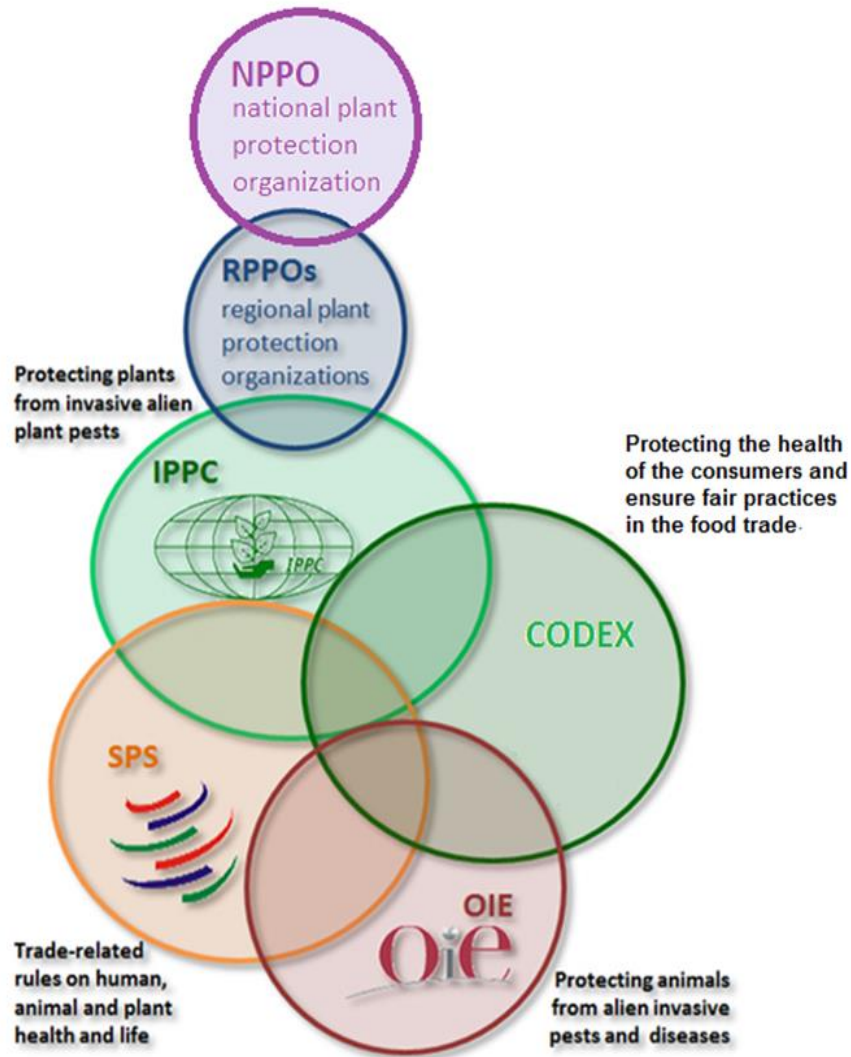
Pacific Plant Protection Organization (PPPO) Report

**The IPPC High-level Symposium on Cooperation of the Phytosanitary
Measures among the Chinese Initiative “One Road” Countries.**

25-28 September 2018 in Nanning, Guangxi, China

Presented by the PPPO Secretariat. LRD, SPC

General information: member countries, history, budget and main activities of the RPPO.



- The Pacific Plant Protection Organization (PPPO) consist of 26 member countries in the South West Pacific (SWP). This consist of 22 Pacific Island countries and Territories (PICT's) and 4 Founding Metropolitan Member countries.
- The Executive Secretariat is based in the Land Resources Division (LRD) in the Pacific Community (SPC).
- The PPPO Constitution was enacted in 1994 and was amended and revised in 2006.
- In the constitution there is a PPPO Executive Committee (PPPO ExCo) that consist of 2 member countries from the 3 sub-regions, members from Australia, New Zealand, FAO with an elected PPPO Chairman and a Vice Chairman.
- The PPPO Full board committee members meet every 3 years (triennial) whereas the PPPO ExCo meets annually or as when needed and reports back to the PPPO members through the PPPO Executive Secretariat.
- There is also a 5 year, PPPO work plan and this work plan is prioritized by the PPPO members and activities are carried out accordingly.
- Funding for the PPPO activities are managed through member contributions and projects that cover activities in the 26 member countries.



Pacific
Community
Communauté
du Pacifique



Food and Agriculture
Organization of the
United Nations



Australian Government
Department of Agriculture,
and Water Resources



Pacific
Community
Communauté
du Pacifique

INTERNATIONAL PLANT PROTECTION CONVENTION (IPPC) WORKSHOP

20-22 August 2018 Nadi - Fiji Islands



Pacific IPPC and RPPO members			
Membership	IPPC	PPPO	APPPC
American Samoa			
Cook Islands			
FSM			
French Polynesia			
Guam			
Kiribati			
RMI			
Nauru			
New Caledonia			
Niue			
CNMI			
Palau			
PNG			
Fiji			

Pacific IPPC and RPPO members			
Membership	IPPC	PPPO	APPPC
Pitcairn			
Samoa			
Solomon Islands			
Tokelau			
Tonga			
Tuvalu			
Vanuatu			
Wallis and Futuna			
Australia			
France			
New Zealand			
USA			

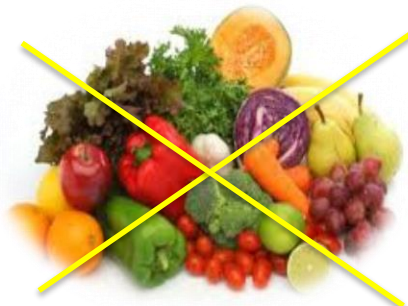
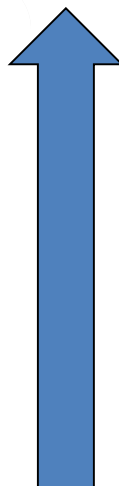


Pacific
Community
Communauté
du Pacifique

Some of the activities that are done by the Pacific Plant Protection Organization (PPPO)



Pacific
Community
Communauté
du Pacifique



*Establishing a framework for regional and global cooperation in **Phytosanitary matters** for the trade of plants and plant products.*



*Developing and implementing effective and **scientifically justified Phytosanitary measures** to protect plant health and life for the PPPO member countries.*



*Providing and facilitating flow of **information** concerning Phytosanitary measures, including prohibitions, restrictions and specifications for entry of plants and plant products and means of deriving particular specifications, and the operational procedures used, if requested*

***Reporting** as soon as practicable to the Secretariat for communication to other members the existence, outbreak and spread of economically important pests of plants and plant products in their countries.*



Risk Management: Plant Pests & Diseases



Pacific
Community
Communauté
du Pacifique

Pre-border Assessments

Primary literature (research papers, specialist texts)



Secondary literature (pest databases, compendia)



Pest specimens



Grey literature (conference proceedings, pamphlets)



PEST Conference 2009 Proceedings

Matthew J. Stubbins

Existing policy/PRA

Import Risk Analysis:
Litchi chinensis (Litchi) fresh fruit
from Taiwan



Newspapers and media

Nasty little pest found in southeast

Brendan O'Malley

BRISBANE residents will be asked to keep a lookout for European bumblebees after a worker bee was found on a flower at Palerang National Park.

The bees are considered a major pest threat and can sting repeatedly, causing severe allergic reactions in some cases.

While not as serious as fire ants, bumblebees introduced pest also discovered on Palerang National Park, bumblebees have spread quickly among native bee hives and compete with them for nectar.

Even worse, they are "sleeper weeds" which are not yet major pests because they lack suitable insects to pollinate them.

Bumblebees could become



LOOK out... the European bumblebee, left, can sting repeatedly unlike the Australian carpenter bee, right.

a headache for gardeners because they build nests in compost heaps, piles of leaves, in drain pipes and in crevices under porches.

They ferociously defend nests and inflict stings which cause severe itching, pain and swelling, irritation, breathing problems and low blood pressure.

The worker bee was captured when an Australian Quarantine Inspection Ser-

vice officer pulled over at the roadside to answer a mobile phone and saw the bee on a flower.

Bumblebees have spread across Tasmania since escaping there in 1962.

A queen found in Mt. Burnett was destroyed before it could mate.

There have been no other bumblebees on the Australian mainland.

The discovery of a worker

bee is considered a worrying sign because it usually means a queen has become established and raised other workers, also possibly more queens.

No other bees have been found so far but that could be because the insects are hibernating.

Surveys will be carried out in spring and residents will be asked to report suspicious-looking insects.

Although the worker bee was spotted on May 4, the Department of Primary Industries said it was not informed until May 21.

It surveyed Parkersham Island the following week.

The Low, from the Inverloch Shire Council, said the DPI response plan for had been approved comprehensively and he hoped it would control the pest.

Australian Government
DAFF

PERMIT TO IMPORT

Permit

Valid from Valid to

FIJI

Papaya

Typhoo Foods

Manufacturing Declaration

a packaged

Mrs Typhoo
Quality Manager

Nadi Heat Company

Cert No. Rego No.

Heat Treatment

Treatment Del

47.2°C for 20 m

Mr A Treatm

Fiji Government
Min. of Primary Industries

Phyto Cert. No. 25C

Papaya
100 boxes
10kg each

Mrs Typhoo
Nadi
FIJI

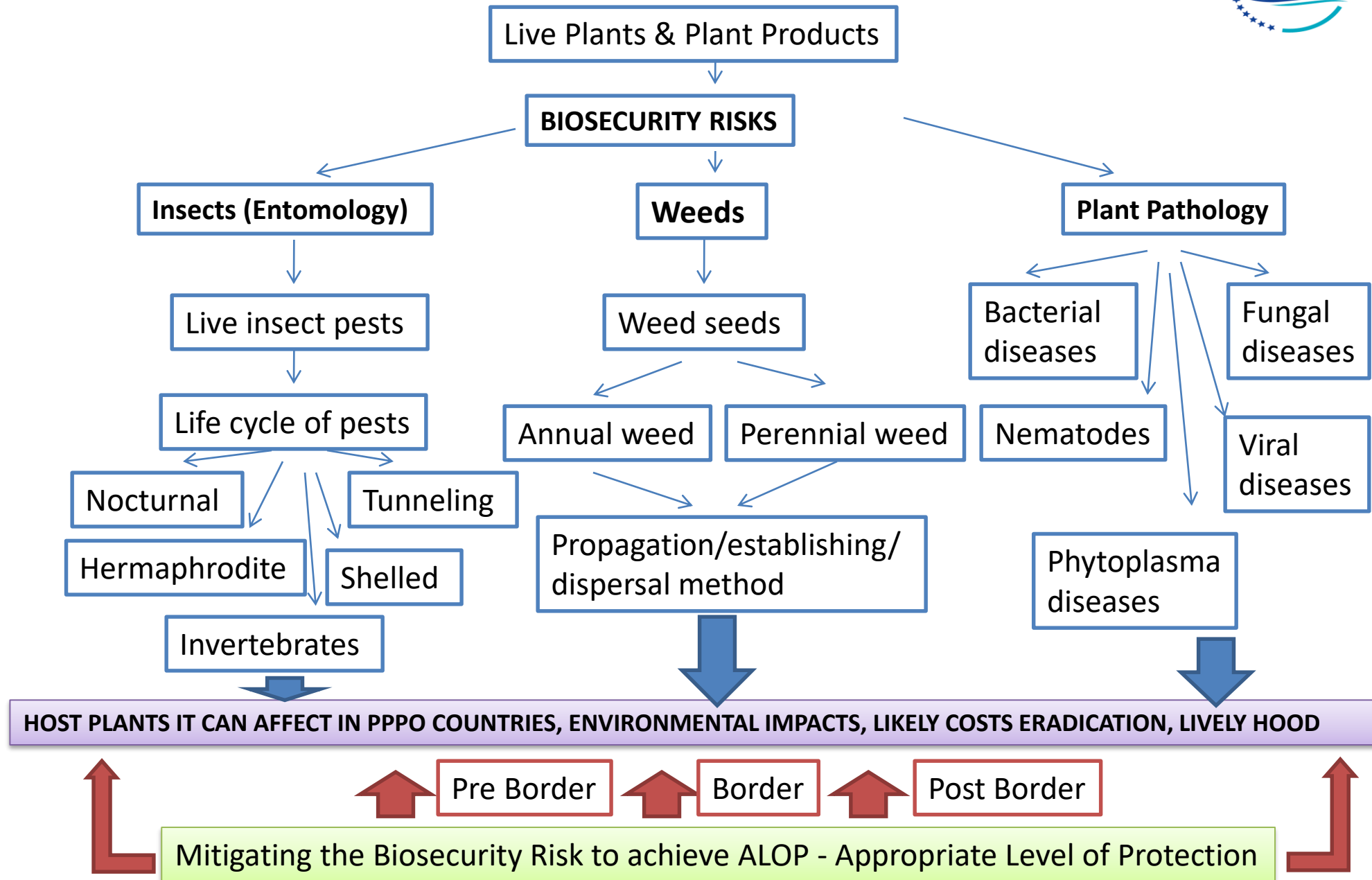
Ad. Dec.
Packhouse No.
HTFA

K. Hayward

Import Risk Assessments



Pacific
Community
Communauté
du Pacifique



Emerging issues (including emerging pests) in plant health for the countries which are members of the RPPO



For the PPPO there is a concern on the trans-boundary risks on Quarantine and Regulated plant pests and diseases. Here are some of the concerns relating to PPPO member countries:

Coconut Rhinoceros Beetle – Guam Strain (CRB-G) - Currently only present in Guam, PNG, Solomon Is, Hawaii.

Taro Bobone and Alomae Virus diseases – Currently only present in Solomon Is and PNG.

Cassava bacterial blight – Currently only present in Solomon Is.

Citrus Greening (Huanglongbing) disease – Not present in the PPPO member countries.

Banana Panama disease – Only present in Australia - Not present in any of the Pacific Island countries.

Symptoms of Palm lethal yellowing phytoplasma.



Pacific
Community
Communauté
du Pacifique



A. Non-bearing palms showing foliage yellowing.

B. Bearing palms started showing nut fall.

C and D. Inflorescence necrosis.

E. Foliage yellowing started in older leaves.

F. and continued with younger ones.

G. Acute stage of lethal yellowing.

Opportunities for the PPPO members:

Ongoing collaboration and networking with other RPPO's on regulated pests and disease incursions as a early warning system to our SWP region.

Potential for the PPPO secretariat to get good funding support from various donor agencies based on our PPPO work plan and the good work that will be carried out collaboratively with the various NPPO's of the region in the pre-border, border and post-border.

Potential for the PPPO secretariat to tap on the vast technical expertise present in the various RPPO's and opportunities to share these experts' capacities through technical trainings for our PPPO members.

Some Challenges for the PPPO members:



Pacific
Community
Communauté
du Pacifique

Funding is always a concern for the PPPO given that we are small PICT's and our levies are not much to cover the work in our PPPO work plan. Need funding and opportunities to sell our PPPO work plan.

Technical expertise in the PPPO region is not many thus the ongoing need on collaboration and help on capacity building of various NPPO's.

Proper diagnostic equipment and facilities for the NPPO's to carry out their work at the pre-border, border and post-border.

Suggestions on international, Regional and bilateral cooperation in Phytosanitary Measures among the Chinese Initiative “The one Belt and One Road” countries. Also please identify areas for cooperation in Phytosanitary Measures:



To be conducted by the IPPC Secretariat

- *The IPPC Secretariat to continue to offer the PPPO members an opportunity to be part of Technical Working Groups; Standards Setting Bodies, take part in the CPM. Also thank the IPPC secretariat on draft ISPM's and the PPPO members to comment on these.*
- *Potential for good collaboration and identifying synergies in the “One Belt and One Road” initiative and way forward on potential capacity building. PCE tool as the last one was in 2007 for the PPPO member countries.*

Cont'd.

To be conducted by the Chinese Ministry of Agriculture

- *The opportunity for PPPO members that are selected to attend and learn from technical workshops on Biosecurity/ Plant Protection that is run and conducted by the Chinese Ministry of Agriculture and Academic institutions.*
- *Potential new Early Warning Systems (EWS) to detect plant pests and disease that have been developed by the Chinese Ministry of Agriculture and relevant private stakeholders and for these new innovations to be shared with the PPPO Secretariat and its PPPO members (Small island countries).*
- *If there is opportunity for the Chinese Ministry of Agriculture to work with the PPPO member countries and identify potential technical collaboration where an exchange program can be initiated to share this technical expertise with the small PPPO member countries.*

Cont'd.

To be conducted by the One Road One Belt countries and related RPPOs

- *Potential Technical expert workshops/ meetings in this One Road One Belt where the Secretariat of the PPPO can also attend and have these rolled out to the PPPO members.*
- *Sharing of technical knowledge and EWS's from the various RPPO's and opportunity to also share success stories relating to incursions, early response systems and collective collaboration on technical and logistics to eliminate these Quarantine/ Biosecurity threats.*
- *Look at the opportunity in trade with various One Road One Belt countries and how system approaches can be implement to give the Quarantine/ Biosecurity level of assurance needed to the importing NPPO countries.*



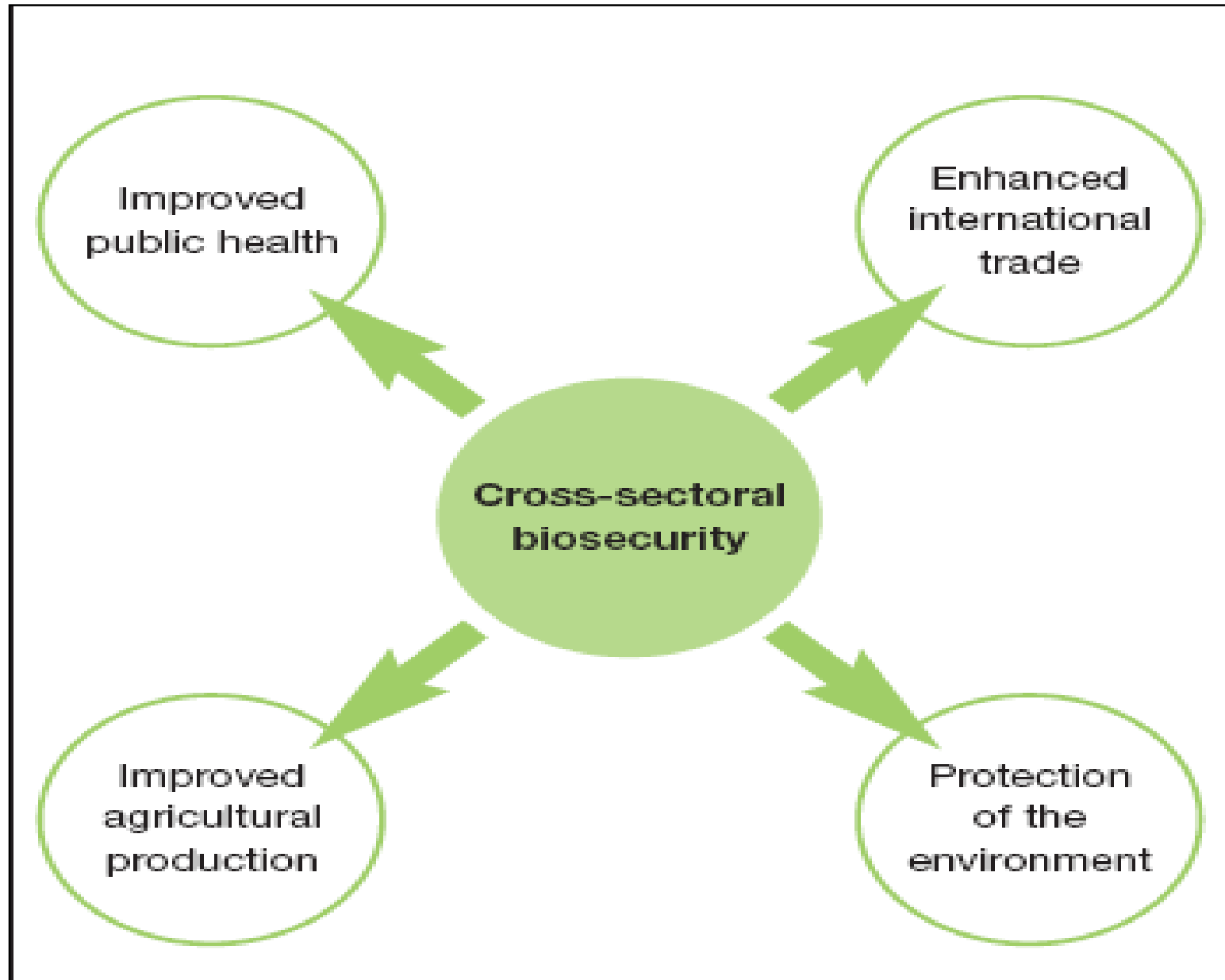
PACIFIC PLANT PROTECTION ORGANISATION (PPPO) CANNOT WORK ALONE



BENEFITS



Pacific
Community
Communauté
du Pacifique



WAY FORWARD



Pacific
Community
Communauté
du Pacifique

Strengthen network with other regional and international agencies





visonit@spc.int