

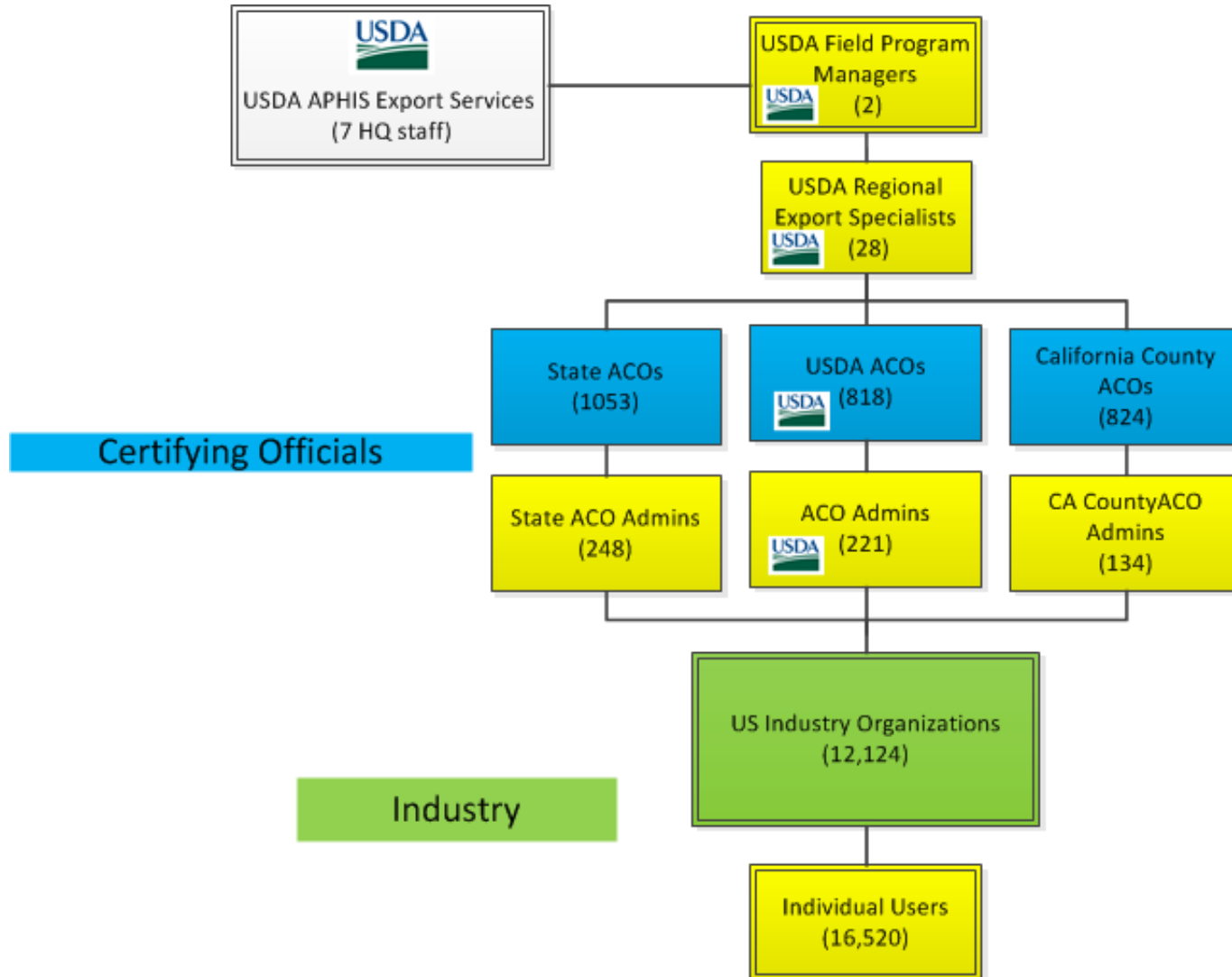


E-Phyto Update

Christian Dellis

Christian.b.dellis@aphis.usda.gov

Export Certification in the US





****Notice**:** All APHIS systems use the USDA eAuthentication security portal for application access. If you have problems logging in, you must call the APHIS eAuthentication Help Desk at 1-866-794-2827 for assistance.

[Log In](#)

USDA APHIS Application Access

[New to this site? Click here.](#)
[Click here to add this page to your favorites.](#)



Animal and Plant Health Inspection Service (APHIS) is responsible for safeguarding agriculture and natural resources from the risks associated with the entry, establishment, or spread of animal and plant pests and noxious weeds.

The APHIS Application Access page is used to log into the following systems:

Phytosanitary Certificate Issuance & Tracking System (PCIT)

PCIT system tracks the inspection of agricultural products and certifies compliance with plant health standards of importing countries. This capability provides APHIS/PPQ better security, reporting functions, and monitoring capabilities for exported commodities.

Veterinary Export Health Certification System (VEHCS)

VEHCS system facilitates creation and endorsement of animal health certificates for export. It helps APHIS/VS to certify compliance with importing countries requirements, and to automate tracking and reporting of exported animal and animal products.



What is PCIT?

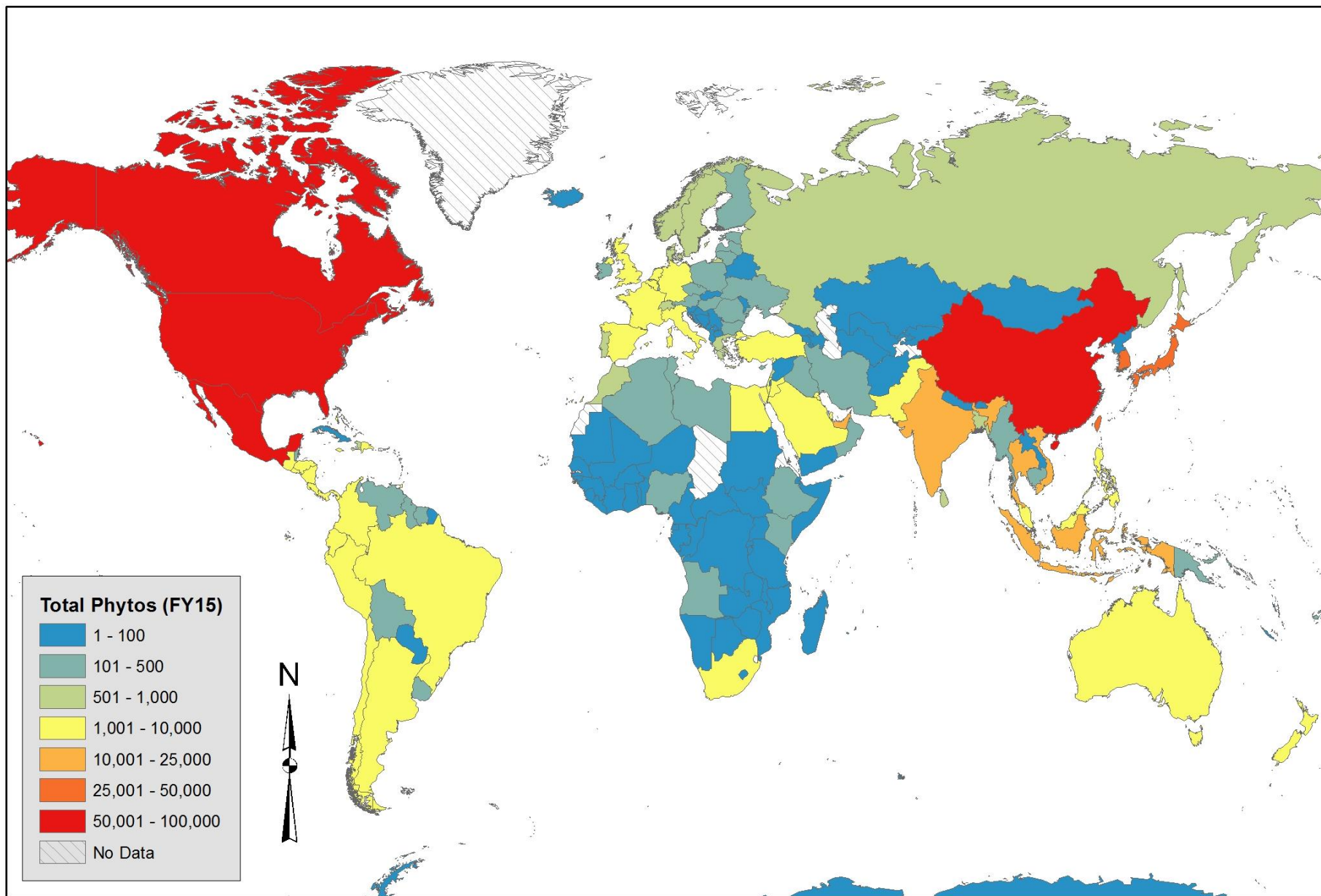
- What it does?
 - Role based
 - Certificate Issuance
 - State (31) and Federal (3), US/NCP (1)
 - Templates
 - Fees
 - State (33), County (29), and Federal
 - Training
 - Electronic exchange
 - Reporting
 - Foreign requirements repository (PExD)



PCIT Facts

- Started December 2005
- 50+ releases
- 4,000+ changes
- > 25,000 registered users world wide
- > 3 million certificates generated
- ~98% all US PCs
- PCIT platform used for other APHIS systems such as VEHCS, LAWGS

US Export Phytos FY15





| FY 2015 | Federal PCs | | |
|--------------------|--------------------|-------------|------|
| Issued | PPQ | 178,391 | |
| | State | 261,430 | |
| | County | 224,452 | |
| | Total | 664,273 | |
| | State PCs | | |
| | County | 46,806 | |
| | State | 6,888 | |
| | State | 53,694 | |
| | Received | Foreign PCs | |
| | | Australia | 1006 |
| Netherlands | | 3,108 | |
| Total | | 4,114 | |
| Grand Total | | 722,081 | |



PCIT eCertification Status

- Can send and receive
- Takes approximately 3 months with each trading partner to establish*
- Netherlands and Australia
- Ongoing discussions with Mexico, China, Canada, Guatemala, Peru, and Chile

Ongoing Challenges

| Common Name | Botanical Name |
|-------------------------------|----------------------|
| Eastern <u>sandcherry</u> | Prunus pumila |
| Great lakes <u>sandcherry</u> | Prunus pumila |
| Western <u>sandcherry</u> | <u>Prunus pumila</u> |
| Sesquehana sandcherry | <u>Prunus pumila</u> |
| Sandcherry | <u>Prunus pumila</u> |

- Multiple common names for same commodity
- Requirements are generally based on botanical names
- Leads to difficulty in reporting

Ongoing Challenges

| Genus | Species | Quantity | Unit |
|--------------|----------------|-----------------|-------------|
| Nicotiana | tabacum | 1181.8 | Grams |
| Nicotiana | tabacum | 0.5 | Kilograms |
| Nicotiana | tabacum | 48 | Pounds |
| Nicotiana | tabacum | 48587000 | Pellets |
| Nicotiana | tabacum | 12000000 | Individual |

- All have the same plant part: "seed"
- Leads to difficulty in reporting

eCert Challenges

- Not just related to technical capabilities
- Continual evolution of eCert XML schema
- Web security mechanism
 - Digital signatures, encryptions (1 or 2)
- Non-uniform codes
 - Data
 - Error handling (basic and data related)
- ISPM12 versus electronic systems
 - Free for all versus structure
 - Commodity versus certificate Additional Declarations
 - Multiple units/packages
 - Complete rework for many systems
 - Unique fields
- Treatment (Process)



Lessons Learned – U.S. Perspective

- Systems are more than just a document generation tool
- Development constantly evolves
- Listen and Adapt
 - Not every change makes users happy
- Enforce internal policies/standard terms
- User Community has a Diverse Spectrum of:
 - Needs
 - Skills
 - Knowledge
 - Capability
- Numerous ways to do the same thing
- Important to standardize but must maintain reality
- Unforeseen impacts
- Importance of partnership and collaboration with all parties.



Paperless?

- In the short term, paper certificates still accompany shipments
- Paper certificates are used for more than phytosanitary certification i.e. letters of credit, etc.
- Multiple shipments cannot be differentiated at the port of arrival i.e. no unique identifier
- Key is not to disrupt TRADE.
- At a minimum, copies should always be available to industry
- Based on recent discussions with industry, countries are encouraged to provide an external validation mechanism (bar code, entry screen, etc)



United States Department of Agriculture

