

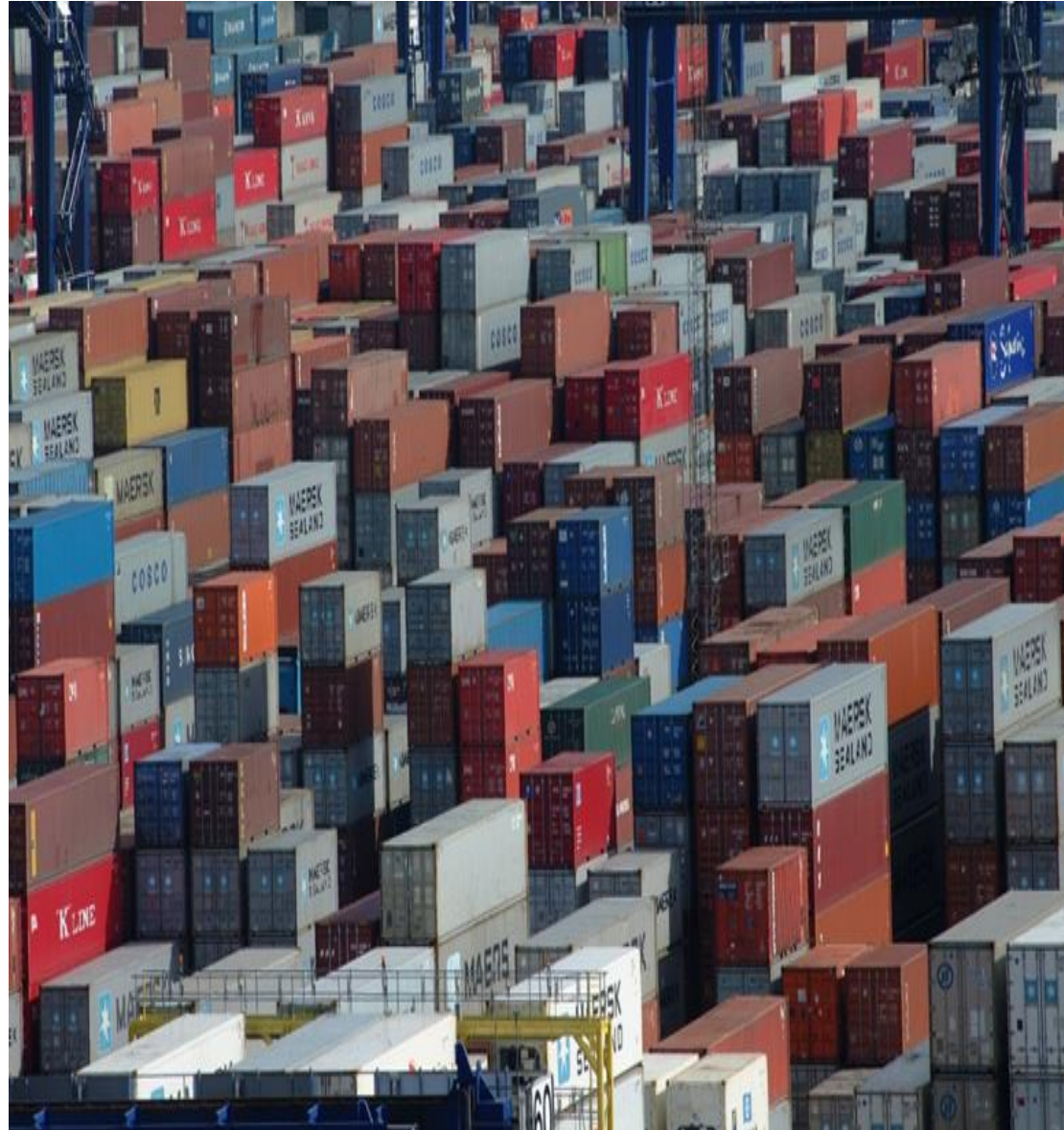


# **Inspection of Sea Containers in the United States**

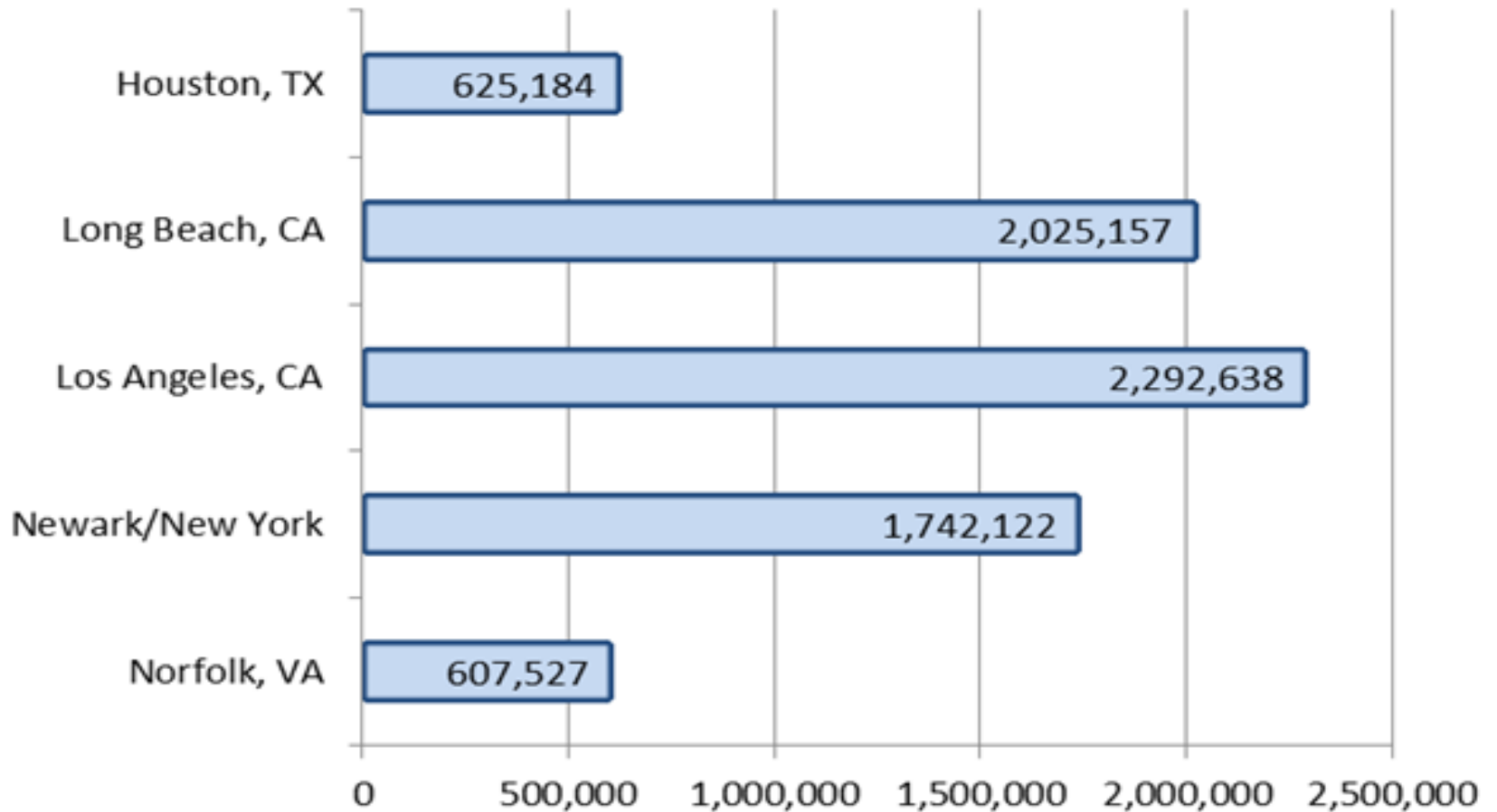
Wendy Beltz

United States Department of Agriculture  
Animal Plant Health Inspection Service  
Plant Protection & Quarantine

Over 12 million containers made entry through 77 ports of entry.



## Top 5 Ports



# Customs and Border Protection

- Animal Plant Health Inspection Service, Plant Protection and Quarantine is the National Plant Protection Organization for the United States
- The Department of Homeland Security's Customs and Border Protection carries out the agriculture import and entry inspection function.



U.S. Customs and  
Border Protection

# Customs and Border Protection

Facilitates and regulates the movement of carriers, people, and commodities between the United States and other nations.



# Types of Examinations

- Document review
- Vehicle and Cargo Inspection System
- Physical inspection
- Sampling



# Pests Associated with Containers

- Khapra Beetle
- Asian Gypsy Moth
- Mollusks
- Weed seeds
- Fruit Fly Larvae



# Khapra beetle: destructive pest of stored grain products and seeds.

- Panama found Khapra beetle in a container of rice originating from Louisiana.
- A maritime container trace report indicated the container had been in the Middle East





# Asian Gypsy Moth: destructive pest of forests.

- USDA works with foreign trading partners to monitor populations.
- Customs and Border Protection inspects containers coming from high risk countries.



# Mollusks: destructive pest of agriculture and horticulture crops.

- Snails attach to exterior of maritime containers.
- Containers of tile from various parts of the world.



# Weed seeds: destructive and invasive pest of agriculture.

Found in floor boards



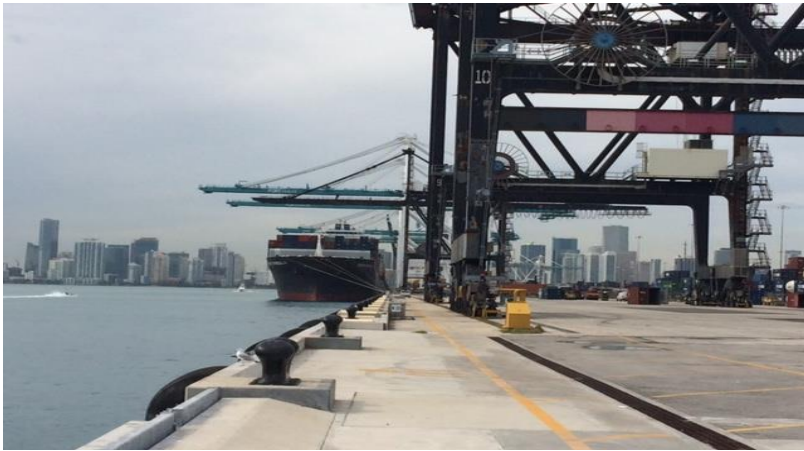
Found in refrigeration unit.

# Fruit Fly: destructive pest of fruits and vegetables.

- Containers of mangos entered the United States and then were exported to another country.
- When the empty containers returned fruit fly larvae were found on the floor.



# Sea Containers: Agriculture Risk?



Contaminated containers enter the United States every day.

These containers are then transported by rail and truck throughout the United States.



got questions

