

Phytosanitary measures for International Postal and Courier Service in Rep. of Korea



2017. 4. 10.



Animal and Plant Quarantine Agency



CONTENTS

I

The Quarantine Situation for Couriers in Korea

II

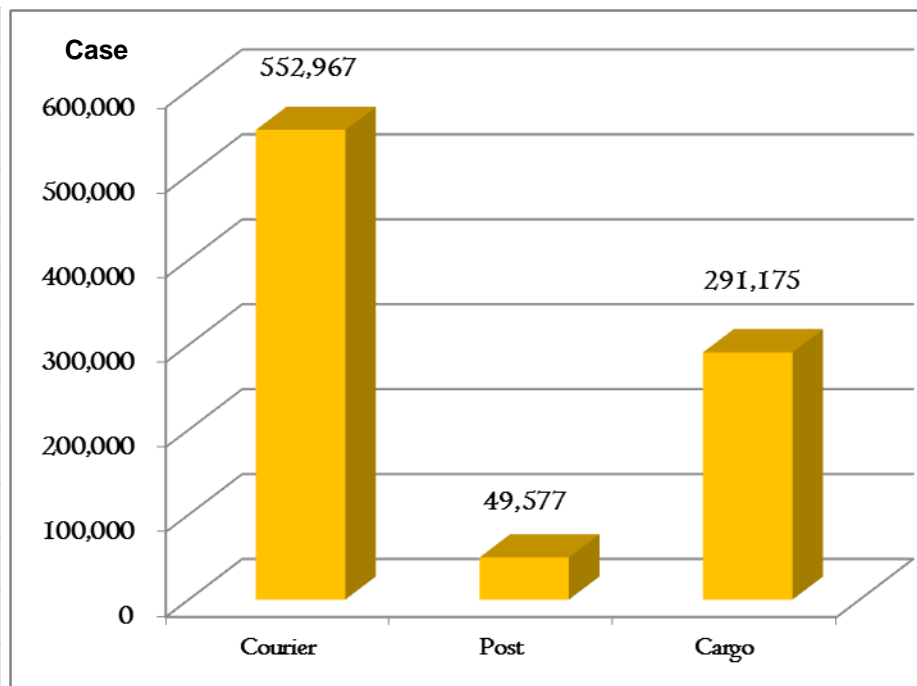
The Inspection System for Couriers

I

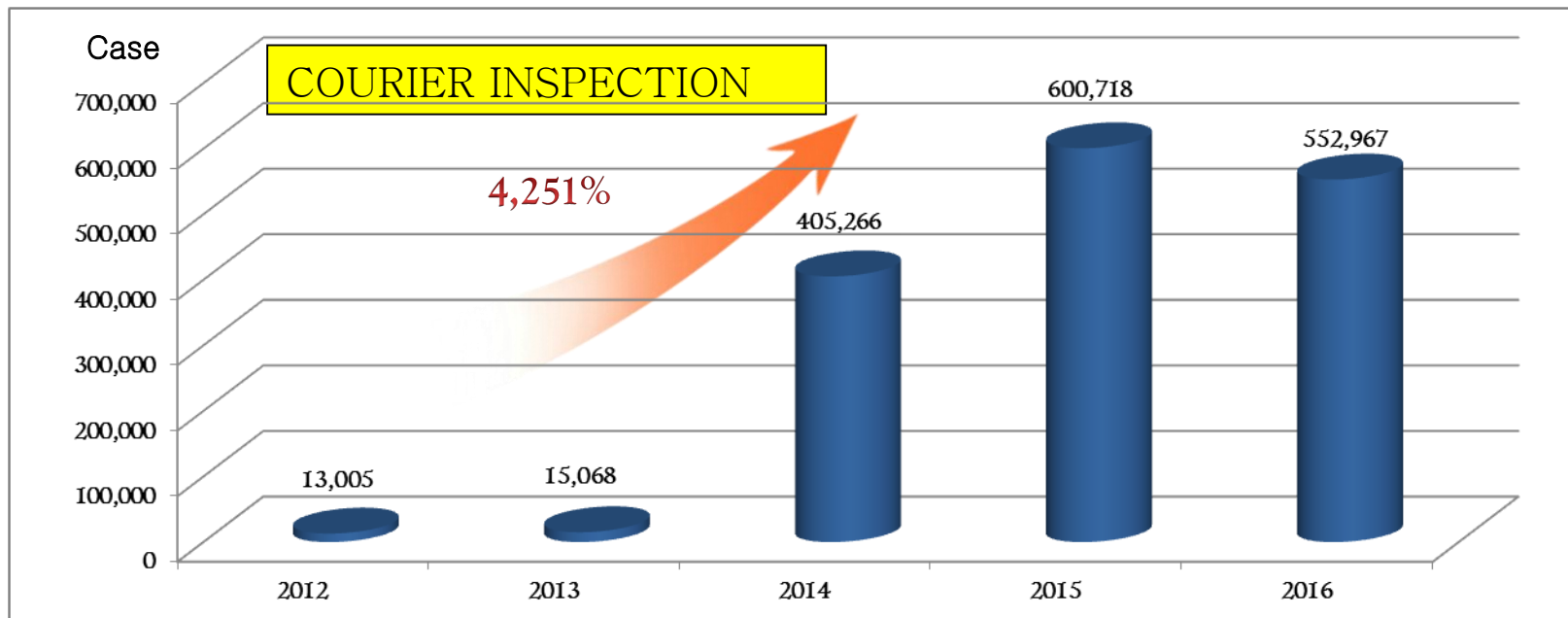
The Quarantine situation for Couriers in Korea(2016)

- Import Inspection(Case) for Plants : About 900 thousand
(except for Hand-carry) : Courier 552,967 Post 49,571 Cargo 291,175
- Courier accounts for about 60% of import inspection cases

Route	Unit	Inspection	
		Case	Amount
Courier	M/T	541,164	341
	1,000m³	7	<1
	1,000ea	11,796	522
Post	M/T	33,443	47
	1,000ea	16,128	599
Cargo	M/T	211,743	30,983,528
	1,000m³	32,042	11,461
	1,000ea	47,390	1,059,437
Total	M/T	786,350	30,883,916
	1,000m³	32,049	11,461
	1,000ea	75,314	1,060,558



Quarantine Situation in Recent 5 years

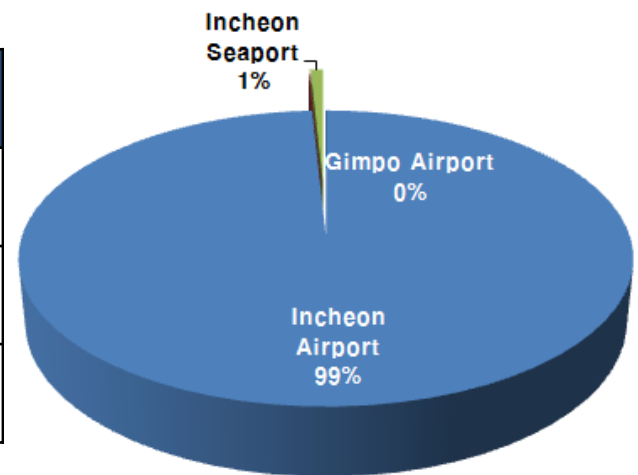


- Growth in demand for health food in line with economic development and cultural advancement.
- Growth in on-line purchasing volume, such as overseas direct purchase, in line with increase in internet use.
- As for courier import and inspection, the volumes are expected to consistently increase for the time being.

Status by transportation (2016)

- Courier Inspection(2016) : total 552,967 cases
- Usually imported by Air

Transportation	Inspection Organization	Port	Inspection (Case)
Air	Incheon Airport Regional Office	Incheon Airport	548,377
	Gimpo Airport Direct Office	Gimpo Airport	160
Sea	Jungbu Regional Office	Incheon seaport	4,430



All couriers to be imported by Air are bound to the Incheon Airport as Incheon Airport Express Cargo Center opens.

II

COURIER INSPECTION SYSTEM

Legislations

● Plant Protection Act Article 12 (Inspection on Imported Plant)

With the increase in couriers, Plant Protection Act has been amended for smooth quarantine to allow courier companies to apply for inspection. (2016.12.)

Before the revision, only importers or agents could apply for the inspection

● QIA Announcement “Inspection method for Imported Plants”

- [Table 12] it specifies inspection tips for plant quarantine items imported through courier, application for inspection, and regulations on inspection result processing and on storage of the couriers by export companies.

Registration and Management for Express Company

Registration

Courier company must be registered with the customs manager in accordance with Article 222 (1) of the Customs Act

Clearance

Customs clearance can be accomplished at their own facilities in case that Courier company have X-ray facility and personnels

Education

X-ray inspectors of courier company must take at least 16 hours of training every year from the agency designated by the Commissioner of Customs. (Training session on quarantine is also required.)

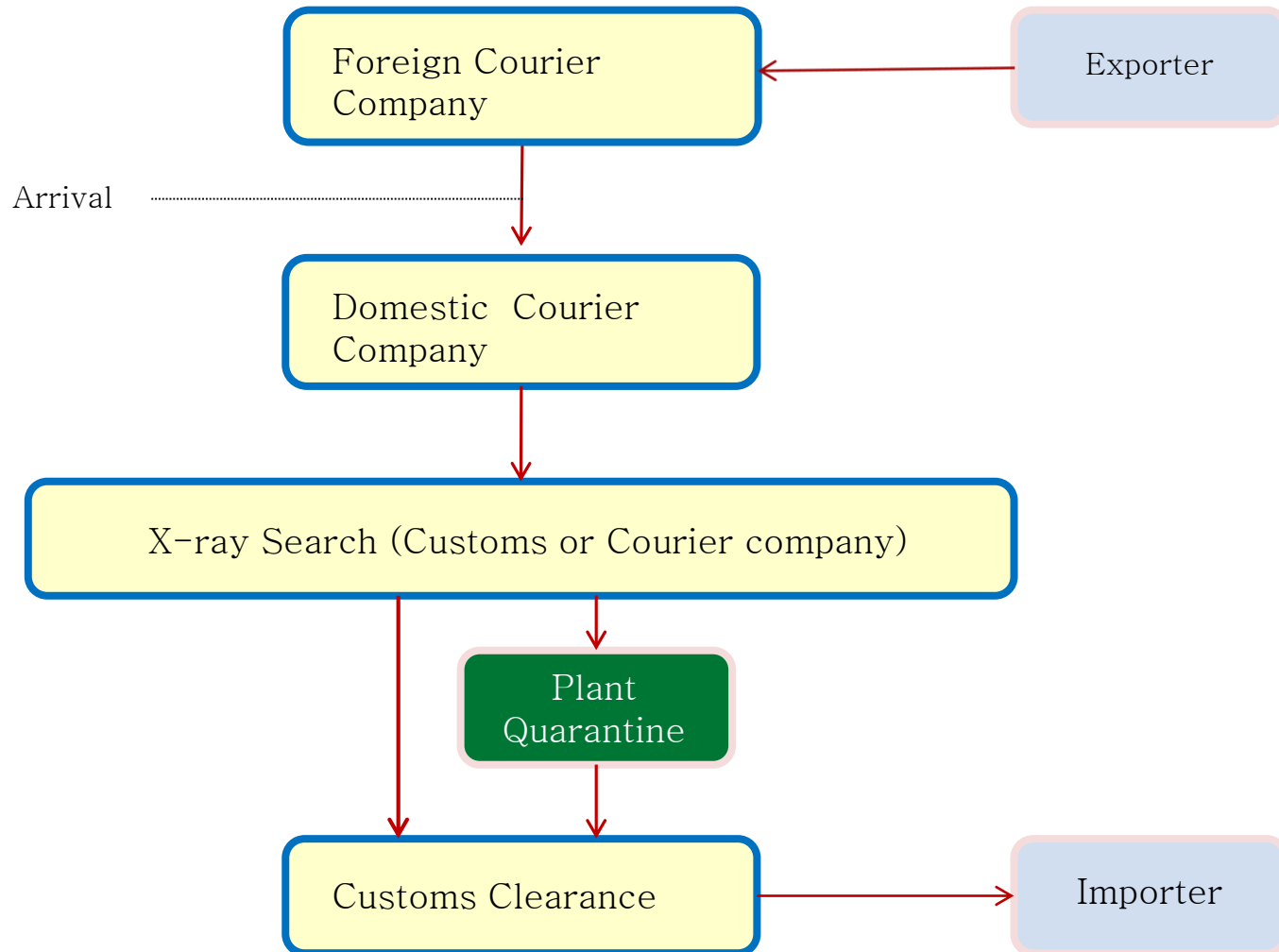
Import Declaration

Courier company on behalf of the importer can file an import declaration and apply for plant quarantine inspection

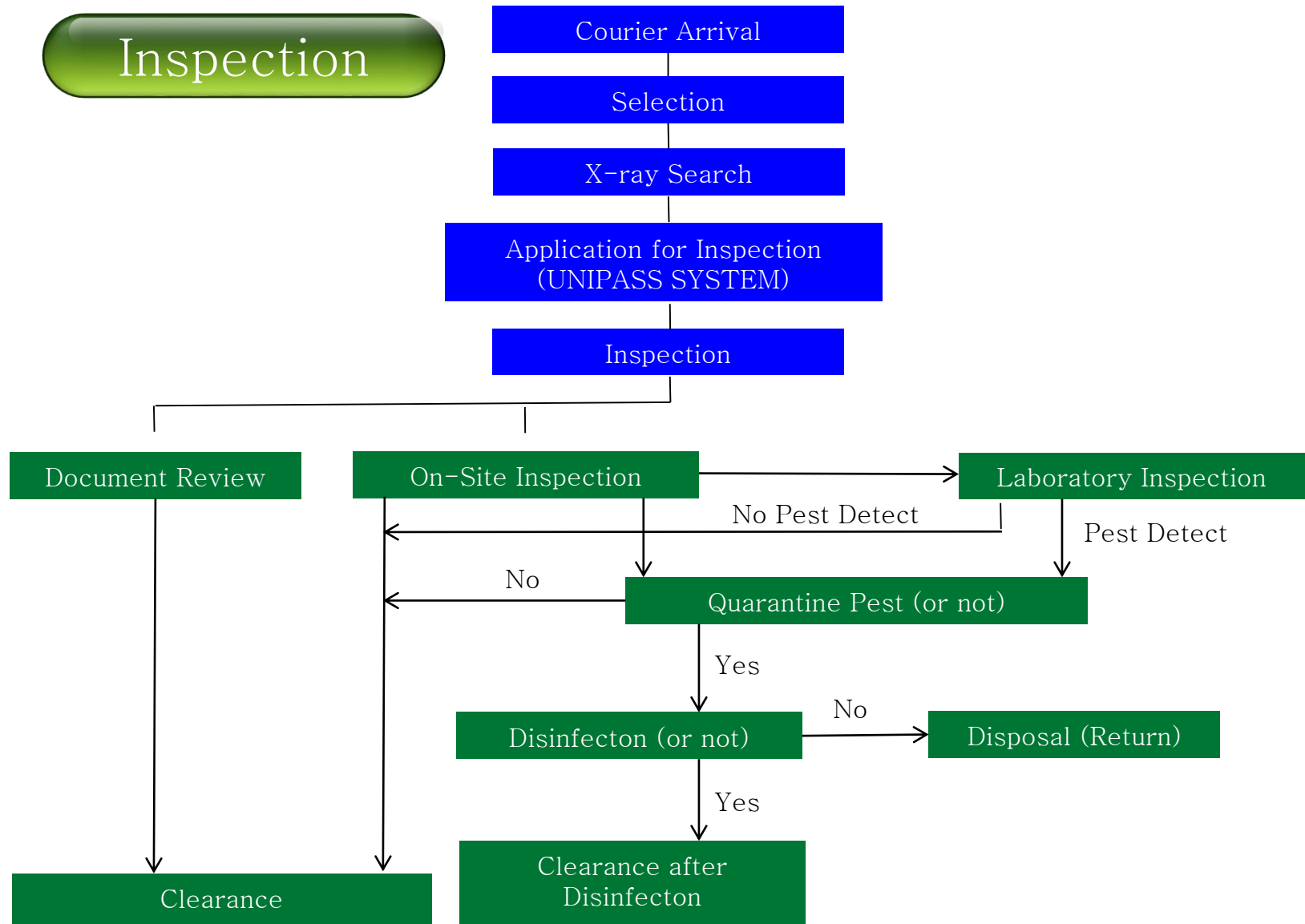
Audit

The customs authorities check the courier company twice or more every year regarding the adequacy of operation, the implementation of laws and regulations and the management of couriers.

Flow Chart for Courier Import





Inspection



Application for Plant Quarantine

● Application through UNI-PASS SYSTEM of Customs(<http://portal.customs.go.kr>)


전자신고 전자납부 업무지원 정보조회 통관단일창구 AEO 고객지원 마이페이지
Q (W1_2) ≡



나의 수출입관리
보다 **안전**하고 **편리**하게!

공지사항

전자문서 처리 지연 안내 [2017-03-20]

전자통관시스템 작업에 따른 중지 안... [2017-03-19]

관세수납 일시정지 안내 [2017-03-16]

유니패스 공인인증서관리 프로그램... [2017-03-16]

항공기 랜딩타임 정보수신 일시 중지 [2017-03-15]

선용품 적재허가 신청서(GOVCBR5JI)... [2017-03-19]

2017년 표준품명코드 공지 [2017-03-09]

최신 제/개정 법령

[법률] 공공기록물 관리에 관한 법률... [2017-03-21]

[법률] 농업생명자원의 보존 - 관리... [2017-03-21]

[법률] 문화재보호법 [2017-03-21]

[법률] 수산생물질병 관리법 [2017-03-21]

[법률] 액화석유가스의 안전관리 및... [2017-03-21]

환율정보 적용기간[17.03.19~17.03.25] [더보기 >](#)

국가(통화)	수출	수입
미국(USD)	1,135.16	1,157.32
일본(JPY)	9.9355	10.1301
유럽연합(EUR)	1,213.13	1,237.47

UNI-PASS 업무처리를 위한 사용자 PC 환경 안내

Windows XP 및 Windows 10의 경우
인터넷익스플로러(IE) 사용시 오류가 발생할 수
있음을 알려드립니다.

★ XP의 경우 IE 미지원

[사용자 PC 권장환경 보기 >](#)

화물진행정보 ● 화물관리번호 ● M B/L - H B/L [Q 조회](#)

신고업무	유통이력	부호신청	증명서발급	업무지원	정보조회
이용안내	자료실	관세청주요사이트	개인통관고유부호	밀수/관세탈루등 신	기타

Document Review (Low Risk Items)

[Method] Document review. Exemption from on-site inspection and laboratory inspection

[Items] Plants with low risk of pest infestation such as dried flower, fruits and vegetables that are packed hermetically



On-Site Inspection (Legulated Articles)

[Inspection Method] Inspecting the presence of prohibited Items and pest infestation

[Items] Grains, vegetables, Lumber and frozen plants etc.



Laboratory Inspection (High Risk Items)

[Inspection Method] conducting tests in a precise manner via Device testing and bacterial culture in laboratory on samples and pests collected on site

[Items] Seeds, Bulbs, Seedlings and Other Plants for Planting



Inspection Procedures

①

Take-In
Selection



②

Movement
of
Selected Items
(After X-Ray)



③

Prepare
for
Inspection



④

Document
Review



⑤

Inspection



⑥

Completion





Thank you!