

# The International Plant Protection Convention

## The IPPC Online Comment System (OCS)

<https://ocs-new.ippc.int/>

**2017 IPPC Regional Workshop**  
**Date, City, Country**



Food and Agriculture Organization  
of the United Nations



International Plant  
Protection Convention

# Outline

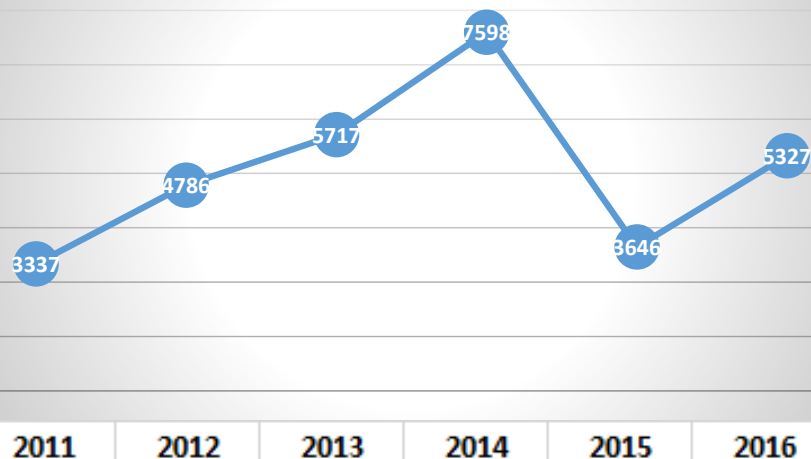
1. System background
2. What has changed / What's new?
3. System structure and external sharing
4. The OCS and IPPC Regional Workshops
5. System demonstration
6. Way forward
7. Questions

## System background

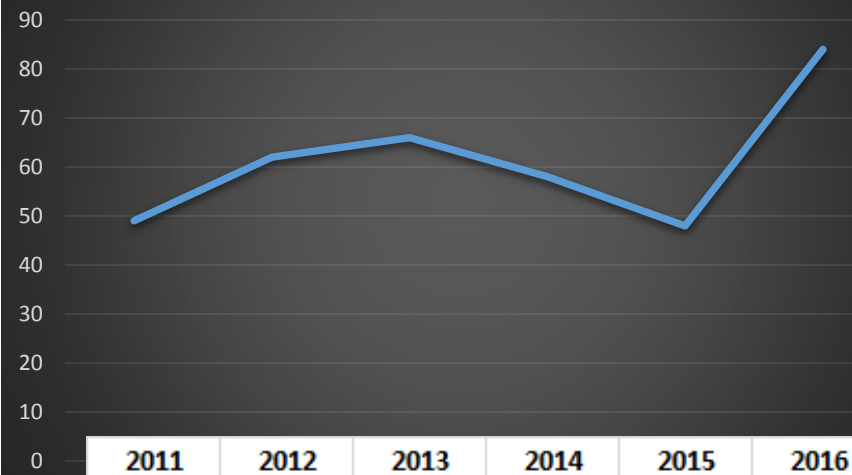
- **OCS mission:** To provide a simple, efficient, user-friendly online system to share, collect and compile comments on documents.
- **2011 to 2014:** The IPPC Secretariat developed and implemented the first version of the Online Comment System.
- **2014-2015:** Secretariat determined new technology needs and requirements, and end of IT support.
- **December 2015:** FAO purchased an off-the-shelf product.
- **January-May 2016:** New OCS customized.
- **July 2016:** The new OCS was launched.

# System background: statistics

Comment Number



Users commenting



# System background: user requirements

Multitenant license

Multilingual

Compatible with  
mobile devices and  
browsers

User friendly

User registration and  
Management

Customizable

One user, more roles

Internal and External  
reviews

Comment categories

Notifications

Search

Data Export

# What has changed? Why is this system better?

- Faster and more solid system.
- New, simplified layout.
- Compatibility with all major browsers and mobile devices.
- New license scheme.
- Direct access to documents under review.
- Easier to use: possibility to navigate through the document, add comments and proposed changes all on the same window.
- Improved search function for users and reviewers.



# What has changed? Differences with old system

Old	New
Consultation	Review
Explanation	Comment
Edit	Proposed change
Submit comments	Publish comments
Compiled comments	Reconciliation Report
Document management page	Reviews I'm in / Reviews I own
Sharing (in-country collaboration and global rule sharing)	Distribution lists (personal and shared)
n/a	Workgroups and Sub-workgroups
Roles: Contact point, Assistant and Reviewer	Roles: Admin-Author (contact point in own workgroup), OCS Deputy and Reviewer

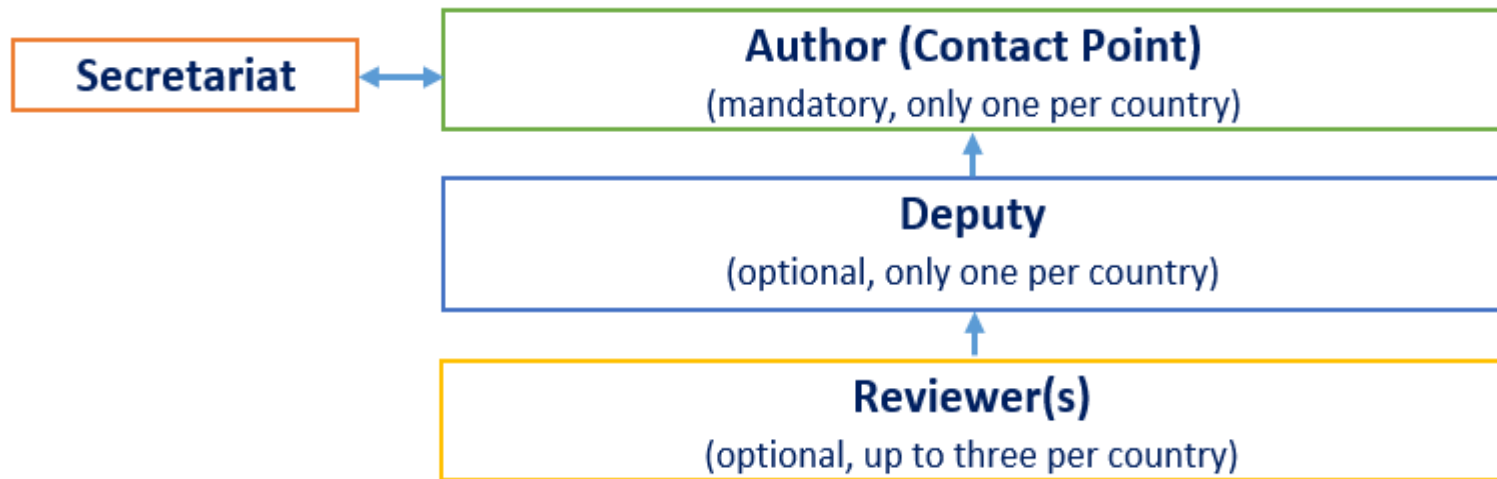
# What's new in 2017?

## External sharing / Sub-teams

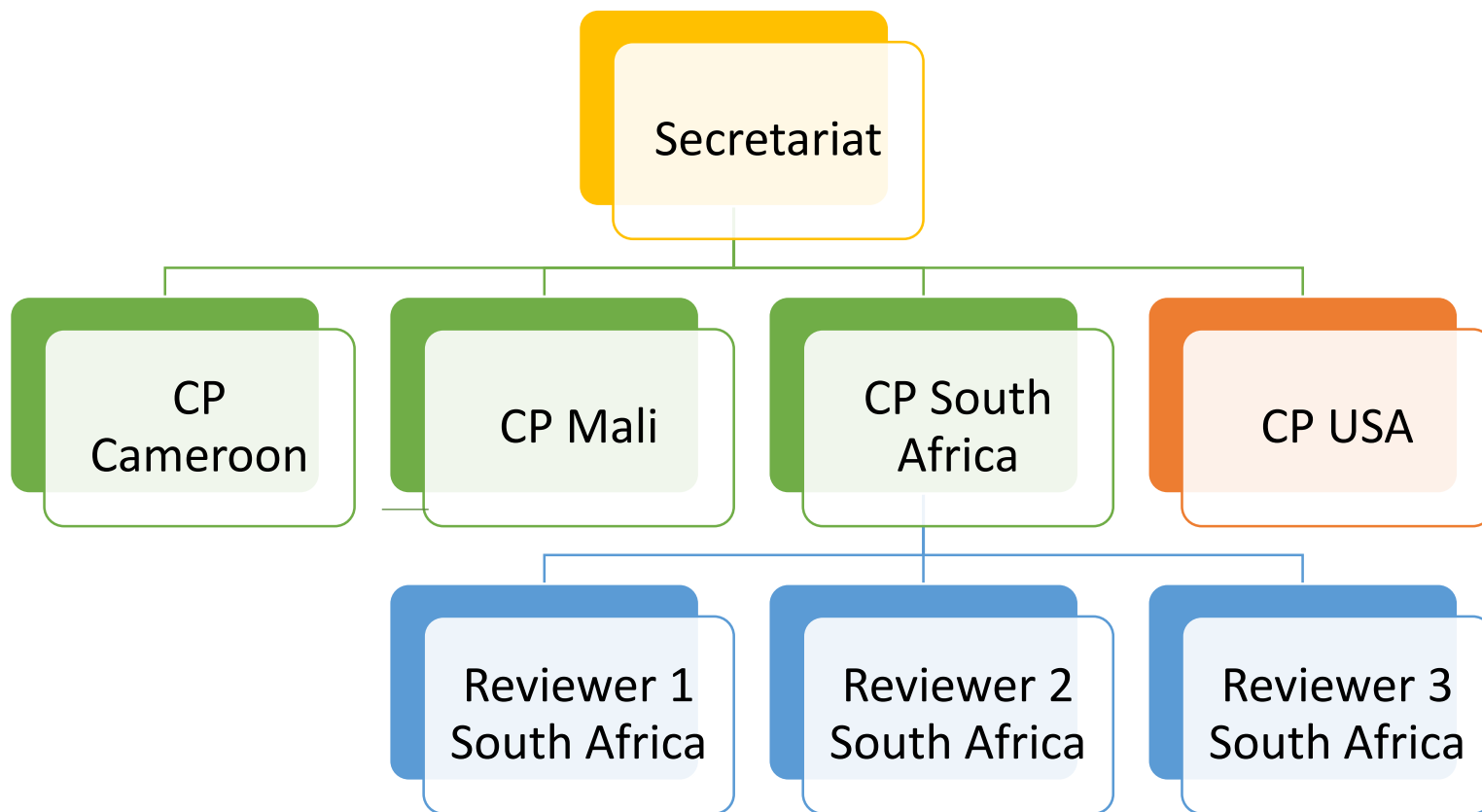




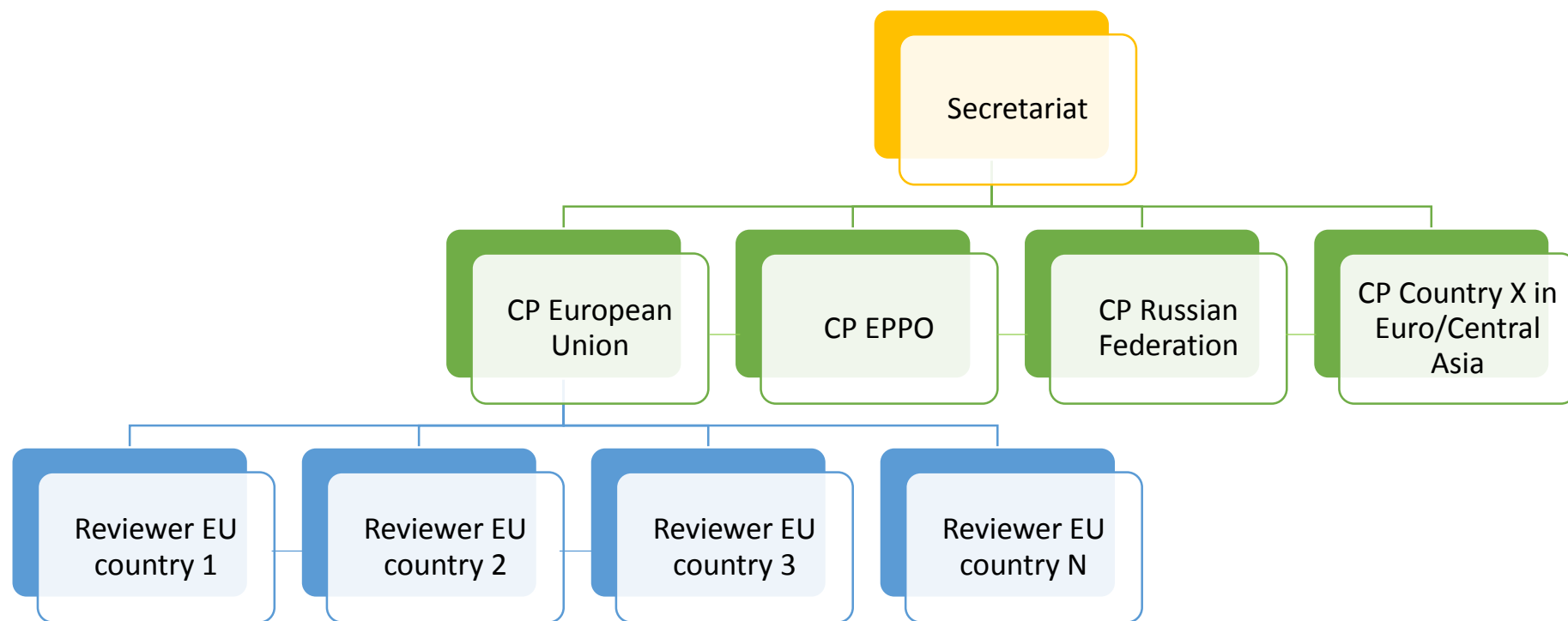
# System structure



## External sharing: case 1



## External sharing: case 2



# The OCS and IPPC Regional Workshops

## Before the Regional Workshop

- **Step 1:** Ensure you have received your IPPC OCS login information.
- **Step 2:** Beginning 1 July, review the draft ISPMs by consulting relevant subject matter experts.
- **Step 3:** Enter the organization's comments into the OCS prior to the workshop.
- **Step 4:** Contact Points decide whether to share comments with all the other organizations present at the workshop.

## During the Regional Workshop

- **Step 5:** The organizer shows comments by countries in the region (members of the sub-team) on the screen; only substantive and technical comments are discussed at the workshop.
- **Step 6:** Participants come to an agreement on comments, which are modified / posted to the OCS by the organizer.

## After the Regional Workshop

- **Step 7:** Review the final workshop comments and determine whether to accept them
- **Step 8:** Contact Points can conduct further reviews of the draft ISPMs.
- **Step 9:** Contact Points finalize comments by 30 September.

# System demo: OCS homepage

IPPC - OCS

English

Español

Français

Welcome to the IPPC Online Comment System (OCS)!

The IPPC OCS resource page is available [here](#).

The PleaseReview Help page is available [here](#).

Draft ISPMs currently under consultation are available for your download [here](#).

☐ Remember me[Reset Password](#)

Login

**IPPC Online Comment System. Contact Us: [IPPC-OCS@fao.org](mailto:IPPC-OCS@fao.org)**

Version 6.1.4 © PleaseTech Ltd. 2004-2016 See Help for 3rd Party legal notices



Food and Agriculture Organization  
of the United Nations



International Plant  
Protection Convention



# System demo: IPPC Workgroup

Visual indicator of  
your current reviews

Checkboxes  
to filter your  
reviews

Workgroup  
indicator

**IPPC - OCS** Admin **Review** Version 6.1.4

Logged in as: **IPPC Secretariat** in Workgroup **IPPC**

**my reviews**

[Reviews I'm in](#) [Reviews I own](#) [Search for reviews](#) [Recycle bin](#)

Review status is ☒ Not started ☒ In progress ☐ Closed ☐ Completed Include: ☒ All workgroup

Due Date	Review Title	Status	Details	Review
30 Sep 2017 11:45 PM	2017 First consultation Robert	Not Started	<a href="#">Select</a>	
7 Sep 2017 11:45 PM	New test review	In Progress	<a href="#">Select</a>	<a href="#">Enter</a>
7 Sep 2017 11:45 PM	Test 200000000	In Progress	<a href="#">Select</a>	<a href="#">Enter</a>
1 Sep 2017 11:45 PM	Test review for DPs	In Progress	<a href="#">Select</a>	<a href="#">Enter</a>
1 Sep 2017 11:45 PM	Test review for DPs 2	In Progress	<a href="#">Select</a>	<a href="#">Enter</a>
5 Aug 2017 11:45 PM	Test review for Contact Points	In Progress	<a href="#">Select</a>	<a href="#">Enter</a>
27 Jun 2017 11:45 PM	Test review for Pierpaolo	In Progress	<a href="#">Select</a>	<a href="#">Enter</a>
23 Jun 2017 11:45 PM	IPPC Yerevan workshop test	In Progress	<a href="#">Select</a>	<a href="#">Enter</a>
2 May 2017 12:00 AM	Test review for IPPC Secretariat	Overdue	<a href="#">Select</a>	<a href="#">Enter</a>




[printable view](#)

© PleaseTech Ltd. 2004-2016  
See Help for 3rd Party legal notices


Link to  
review  
control  
panel

Link to  
enter  
review

# System demo: Entering the review

**IPPC - OCS** **Admin** **Review**   

Version 6.1.4 Logged in as: **Test-CP1** in Workgroup » Test CP1 ▼

 **please**review

**review**  
[new review](#)  
[my reviews](#)




**distribution lists**  
[manage lists](#)

© **PleaseTech Ltd. 2004-2016**  
See Help for 3rd Party legal notices

**my reviews**

[Reviews I'm in](#) [Reviews I own](#) [Search for reviews](#) [Recycle bin](#)

Review status is ☒ Not started ☒ In progress ☐ Closed ☐ Completed Include: ☐ All workgroups

Due Date ▼	Review Title	Status	Details	Review
29 Jun 2017 23:45	 IPPC Yerevan workshop test [Sub-review] 1	In Progress	<a href="#">Select</a>	<a href="#">Enter</a>
22 Jun 2017 23:45	 IPPC Yerevan workshop test [Sub-review]	In Progress	<a href="#">Select</a>	<a href="#">Enter</a>
8 Jun 2017 0:00	 Test review for IPPC Secretariat [Sub-review]	Not Started	<a href="#">Select</a>	

[printable view](#)

[fresh](#)

# System demo: Commenting page

**Navigation pane**

**Review pane**

**Comment pane**

**Navigation pane:**

- Test 1 En
  - Draft ISPM: International movement of seeds (2009-003)
  - Contents
  - 1. ADOPTION
  - 2. INTRODUCTION
    - 2.1 Scope
    - 2.2 References
    - 2.3 Definitions
    - 2.4 Outline of Requirements
  - 3. BACKGROUND
  - 4. IMPACT ON BIODIVERSITY AND THE ENVIRONMENT
  - 5. REQUIREMENTS
    - 5.1 Pest Risk Analysis
      - 5.1.1 Seeds as pathways
      - 5.1.2 Intended use
    - 5.2 Phytosanitary Measures
      - 5.2.1 Seed certification schemes
      - 5.2.2 Resistant varieties
      - 5.2.3 Pest free areas, pest free places of production and pest free production sites
      - 5.2.4 Treatments
      - 5.2.5 Packaging
      - 5.2.6 Measures for seed production
- Test 1 Fr
- Test 1 Es

**Review pane:**

Draft ISPM: International movement of seeds (2009-003)

**Contents**

- [1. ADOPTION](#)
- [2. INTRODUCTION](#)
  - [2.1 Scope](#)
  - [2.2 References](#)
  - [2.3 Definitions](#)
  - [2.4 Outline of Requirements](#)
- [3. BACKGROUND](#)
- [4. IMPACT ON BIODIVERSITY AND THE ENVIRONMENT](#)
- [5. REQUIREMENTS](#)
  - [5.1 Pest Risk Analysis](#)
    - [5.1.1 Seeds as pathways](#)
    - [5.1.2 Intended use](#)
  - [5.2 Phytosanitary Measures](#)
    - [5.2.1 Seed certification schemes](#)
    - [5.2.2 Resistant varieties](#)
    - [5.2.3 Pest free areas, pest free places of production and pest free production sites](#)
    - [5.2.4 Treatments](#)
    - [5.2.5 Packaging](#)
    - [5.2.6 Measures for seed production](#)

**Status box**

This is not an official part of the standard and it will be modified by the IPPC Secretariat after adoption.

Date of this document	2014-05-21
Document category	Draft ISPM (priority 1)
Current document stage	To member consultation
Major stages	2009-11 SC introduced topic: International movement of seed (2009-003) 2010-03 CPM-5 added topic 2010-12 SC approved draft specification for member consultation via e-decision

**Comment pane:**

comments on Test 1 En

Paragraph Id 24 refresh

Comments

enter a comment: attach a file

<<click to enter a comment>>

and edit the text of the paragraph below:

Arial B I U X x<sup>2</sup> NB SP

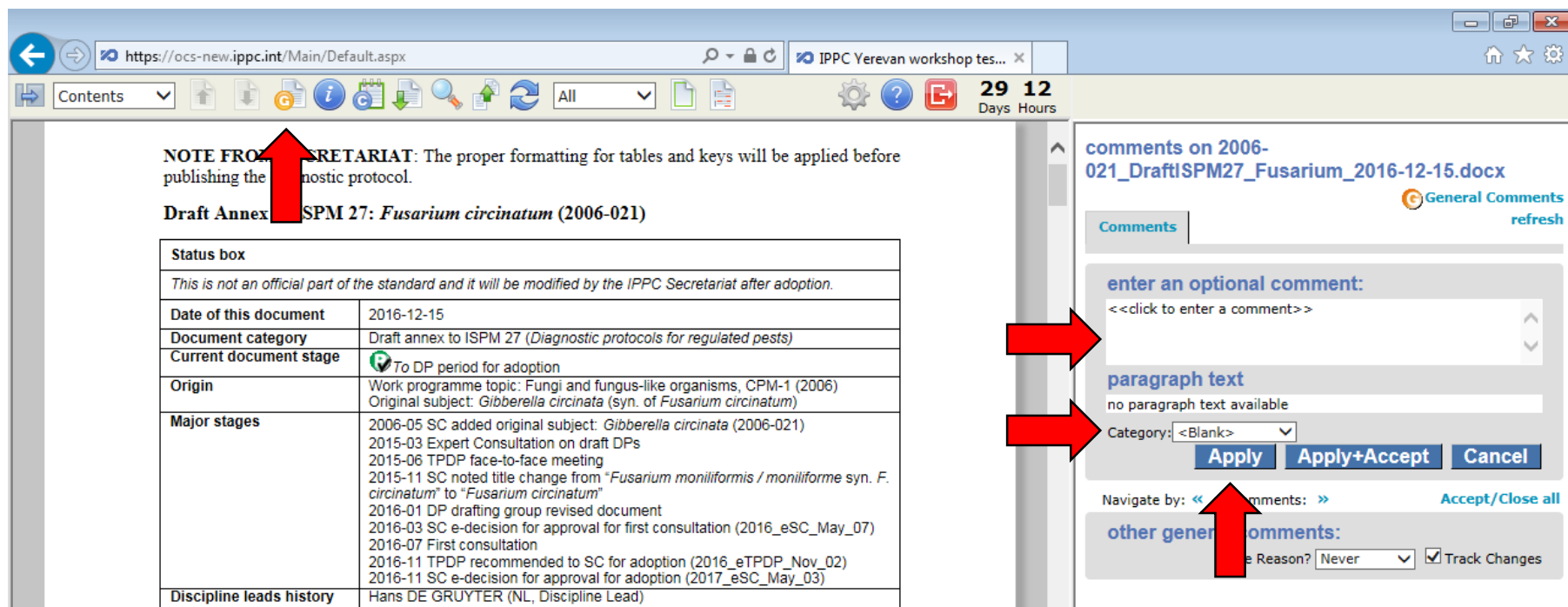
This is not an official part of the standard and it will be modified by the IPPC Secretariat after adoption.

Category: <Blank> Apply Apply+Accept Cancel

Navigate by: << all comments: >> Accept/Close all

other comments: Give Reason? Never Track Changes

# System demo: Adding general comments



NOTE FROM SECRETARIAT: The proper formatting for tables and keys will be applied before publishing the diagnostic protocol.

**Draft Annex** SPM 27: *Fusarium circinatum* (2006-021)

<b>Status box</b>	
<i>This is not an official part of the standard and it will be modified by the IPPC Secretariat after adoption.</i>	
<b>Date of this document</b>	2016-12-15
<b>Document category</b>	Draft annex to ISPM 27 (Diagnostic protocols for regulated pests)
<b>Current document stage</b>	To DP period for adoption
<b>Origin</b>	Work programme topic: Fungi and fungus-like organisms, CPM-1 (2006) Original subject: <i>Gibberella circinata</i> (syn. of <i>Fusarium circinatum</i> )
<b>Major stages</b>	2006-05 SC added original subject: <i>Gibberella circinata</i> (2006-021) 2015-03 Expert Consultation on draft DPs 2015-06 TPDP face-to-face meeting 2015-11 SC noted title change from " <i>Fusarium moniliformis</i> / <i>moniliforme</i> syn. <i>F. circinatum</i> " to " <i>Fusarium circinatum</i> " 2016-01 DP drafting group revised document 2016-03 SC e-decision for approval for first consultation (2016_eSC_May_07) 2016-07 First consultation 2016-11 TPDP recommended to SC for adoption (2016_eTPDP_Nov_02) 2016-11 SC e-decision for approval for adoption (2017_eSC_May_03)
<b>Discipline leads history</b>	Hans DE GRUYTER (NL, Discipline Lead)

**comments on 2006-021\_DraftISPM27\_Fusarium\_2016-12-15.docx**

**Comments**

enter an optional comment:  
<<click to enter a comment>>

**paragraph text**  
no paragraph text available

Category: <Blank>

**Apply** **Apply+Accept** **Cancel**

Navigate by: << comments: >> **Accept/Close all**

**other general comments:**

Reason? Never ☒ Track Changes



# System demo: Adding comments to paragraphs

The screenshot displays a web-based interface for the International Plant Protection Convention (IPPC) Secretariat. The main content area shows a diagnostic protocol document. A red arrow points to a paragraph under the heading "1. Pest Information". Another red arrow points to the "comments on Test Robert" sidebar on the right. This sidebar contains a text input field for "enter an optional comment:", a rich text editor for "and/or edit the text of the paragraph below:", and buttons for "Apply", "Apply+Accept", and "Cancel". A third red arrow points to the "Apply" button. A fourth red arrow points to the "Proposed change (1) by IPPC Secretariat on 24 May 2017" section at the bottom of the sidebar, which shows the edited text and a "Track Changes" checkbox.

This diagnostic protocol was adopted by the Commission on Phytosanitary Measures in 20--.

The annex is a prescriptive part of ISPM 27 (*Diagnostic protocols for regulated pests*).

### 1. Pest Information

**P** *Phytophthora ramorum* Werres, de Cock & Man in't Veld (Werres *et al.*, 2001) is an oomycete pathogen of unknown origin (Brasier *et al.*, 2004). It is considered to have been introduced into western North America and western Europe in the late twentieth century by the ornamental plant trade (Prospero *et al.*, 2007; Mascheretti *et al.*, 2008; Goss *et al.*, 2011; Grünwald *et al.*, 2012; Van Poucke *et al.*, 2012). *P. ramorum* attacks a wide range of trees and shrubs in nurseries and in the field, causing leaf blight, stem cankers, bleeding stem lesions and dieback.

In North America the pathogen was found in the early 1990s causing mortality of *Quercus* (oak) trees and *Lithocarpus densiflorus* (tanoaks), mainly in California and Oregon (Rizzo *et al.*, 2002. Named "Sudden Oak Death" (SOD), the disease has reached epidemic proportions in North America at present. The pathogen was originally considered a woodland disease but since 2003 nursery plants in several states of the United States have been affected. The disease has also been found in Canada.

In Europe *P. ramorum* has been observed in Germany since 1993 causing twig blight of rhododendron in nurseries and on mature bushes in gardens. In the Netherlands it was found in 1998 on diseased *Viburnum* sp. (Werres and Marwitz, 1997; Werres *et al.*, 2001). The pathogen has now been recorded in more than 20 European countries, predominantly on ornamental plants in nurseries and in a few managed gardens. In 2009, however, *P. ramorum* was unexpectedly found infecting and killing large numbers of *Larix kaempferi* (Japanese larch) trees in south-west England. Heavy dieback and mortality of plantation *L. kaempferi* trees in western Britain and Northern Ireland have resulted in the felling of 0.6 million trees (Brasier and Webber, 2010; Webber *et al.*, 2010).

This unexpected finding emphasizes that although many of its hosts are known, the main threat of *P. ramorum* is to tree species and other ecologically important plants such as heathland species. The pathogen is, however, most commonly observed on *Camellia*, *Magnolia*, *Pieris*, *Quercus* (in particular *Q. acuta*, *Q. agrifolia*, *Q. cerris*, *Q. chrysolepis*, *Q. ilex* and *Q. rubra* (red oak) species), *Rhododendron* and *Viburnum*. Recent findings and lists of the known hosts for *P. ramorum* can be found in CABI (n.d.), COMTF (n.d.), Fera (2014a, n.d.) and USDA-APHIS (2014a). Disease symptoms and host plants are listed and regularly updated on websites (COMTF, n.d.; Fera, 2014a).

*P. ramorum* has a complex life cycle and is adapted to cool temperatures, with 20 °C being optimal. Although *P. ramorum* is soil-borne, deciduous, asexually produced sporangia are formed on the surface of infected leaves or twigs and, depending on environmental conditions, are locally splash-dispersed or spread over long distances by wind and wind-driven rain (Davidson *et al.*, 2005). Rivers, streams and other waterways can also carry the sporangia and thus spread the pathogen (Defra, 2007). Sporangia that land on suitable hosts germinate to produce hyphae. In the presence of water, sporangia will release motile zoospores that encyst on the host surface, germinate and penetrate the host tissue, forming a colony from which more sporangia are produced. These sporangia repeat the cycle and with enough repetitions, under the right environmental conditions, on

**comments on Test Robert** Paragraph Id 49 refresh

Comments Bookmarks Zones

enter an optional comment:  
<<click to enter a comment>>

and/or edit the text of the paragraph below: +

Font family -- B I U X\* x\* NB SP

*Phytophthora ramorum* Werres, de Cock & Man in't Veld (Werres *et al.*, 2001) is an oomycete pathogen of unknown origin (Brasier *et al.*, 2004). It is considered to have been introduced into western North America and western Europe in the late twentieth century by the ornamental plant trade (Prospero *et al.*, 2007; Mascheretti *et al.*, 2008; Goss *et al.*, 2011; Grünwald *et al.*, 2012; Van Poucke *et al.*, 2012). *P. ramorum* attacks a wide range of trees and shrubs in nurseries and in the field, causing leaf blight, stem cankers, bleeding stem lesions and dieback.

Category: <Blank>

Apply Apply+Accept Cancel

Navigate by: << all >> Accept/Close all

other comment

Reason? Never [x] Track Changes

**Proposed change (1) by IPPC Secretariat on 24 May 2017**  
2:25 PM Reply Accept Close Delete Edit

Category: EDITORIAL

*Phytophthora ramorum* Werres, de Cock & Man in't Veld (Werres *et al.*, 2001) is an oomycete pathogen of unknown origin (Brasier *et al.*, 2004). It is considered to have been introduced into western North America and western Europe in the late twentieth century by the ornamental plant trade (Prospero *et al.*, 2007; Mascheretti *et al.*, 2008; Goss *et al.*, 2011; Grünwald *et al.*, 2012; Van Poucke *et al.*, 2012). *P. ramorum* attacks a wide range of trees and shrubs in nurseries and in the field, causing leaf blight, stem cankers, bleeding stem lesions and dieback.

IPPC Secretariat (24 May 2017 2:25 PM)  
To correct the spelling



## Contacts and resources

- Contact: [IPPC-OCS@fao.org](mailto:IPPC-OCS@fao.org)
- OCS resource page, with multi-lingual user manual and videos: <https://www.ippc.int/en/online-comment-system/>
- Face-to-face presentations and demonstrations at Regional Workshops
- Webinars (group or one-on-one) as requested

# Questions?



# Contacts

IPPC Secretariat

Food and Agriculture Organization of the United Nations

Viale delle Terme di Caracalla, 00153 Rome, Italy

Tel.: +39-0657054812

Email: [IPPC@fao.org](mailto:IPPC@fao.org)

Websites:

[www.fao.org](http://www.fao.org)

[www.ippc.int](http://www.ippc.int)

<http://www.phytosanitary.info/>



Food and Agriculture Organization  
of the United Nations



International Plant  
Protection Convention