

# Working Group 3: Generic National System (GeNS)

The 3rd IPPC Global Symposium on ePhyto

“ePhyto and Trade Facilitation”

22-26 January 2018

# ePhyto – IPPC Solutions

HUB

Generic National System  
(GeNS)

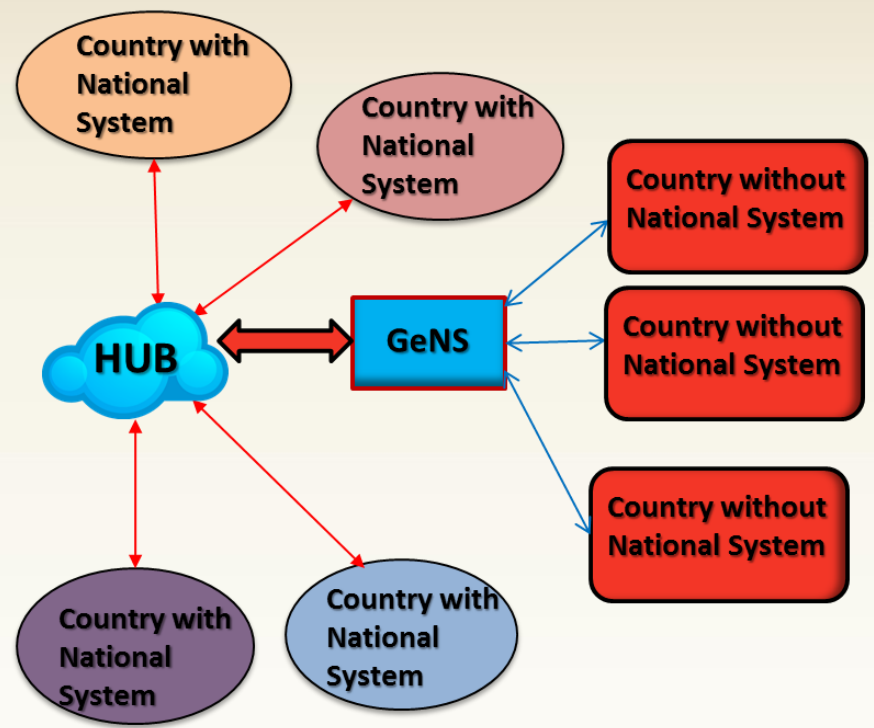
The 3rd IPPC Global Symposium on ePhyto

“ePhyto and Trade Facilitation”

22-26 January 2018

# Generic National System Overview

- ❖ Centralized system to facilitate the creation of ePhytos.
- ❖ Multi-tenanted web-based system
- ❖ Developed for countries without their own systems to produce ePhytos, send and receive them electronically
- ❖ Has built in workflows around export/import ePhytos



# GeNS – Main Features

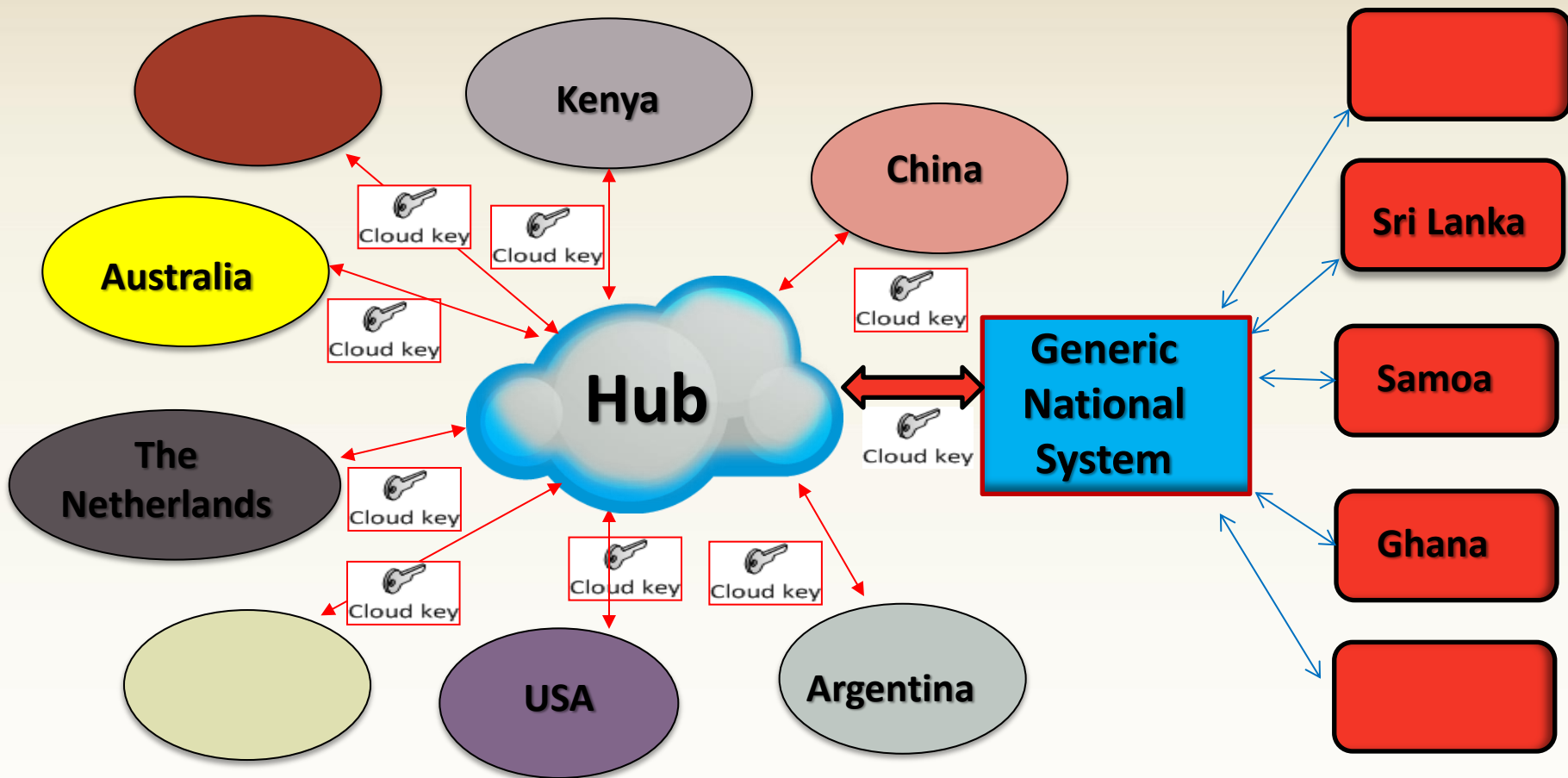
- Facilitate data entry and standardization of codes, including translations for export certification
- Produces ePhyto with data compliant in the UN/CEFACT format as per ISPM12 Appendix 1
- Built-In Industry workflows to support Inspection and Issuance of the ePhyto
- Integrated with the HUB for Receiving and Sending ePhyto



# GeNS – Main Features

- Provides storage of issued ePhyto for an agreed time
- Printing of the certificate data for paper based processing (specially non-hub destinations)
- Ensure authenticity of the received ePhytos.
- Provide data extraction (including reporting)
- Designed to be used in low-bandwidth environment and work with most of the desktop/device & browser

# Hub & The Generic National System





# Roles

**UNICC: overall ADMIN**

**Assigns NPPO ADMIN**

**NPPO ADMIN: country level**

**Assigns other ADMINS (only the main ADMIN can remove ADMIN roles)**

**Assigns NPPO inspectors, officers, assistants**

**Assigns Company ADMINS**

**Company ADMIN: company level**

**Assigns Company users**



# GeNS – Export certificate

Company user

Certificate request: entering data consignment

NPPO exporting country, inspector

Check certificate request

NPPO exporting country, officer

Issue certificate

NPPO exporting country, assistant

Create and amend certificate request

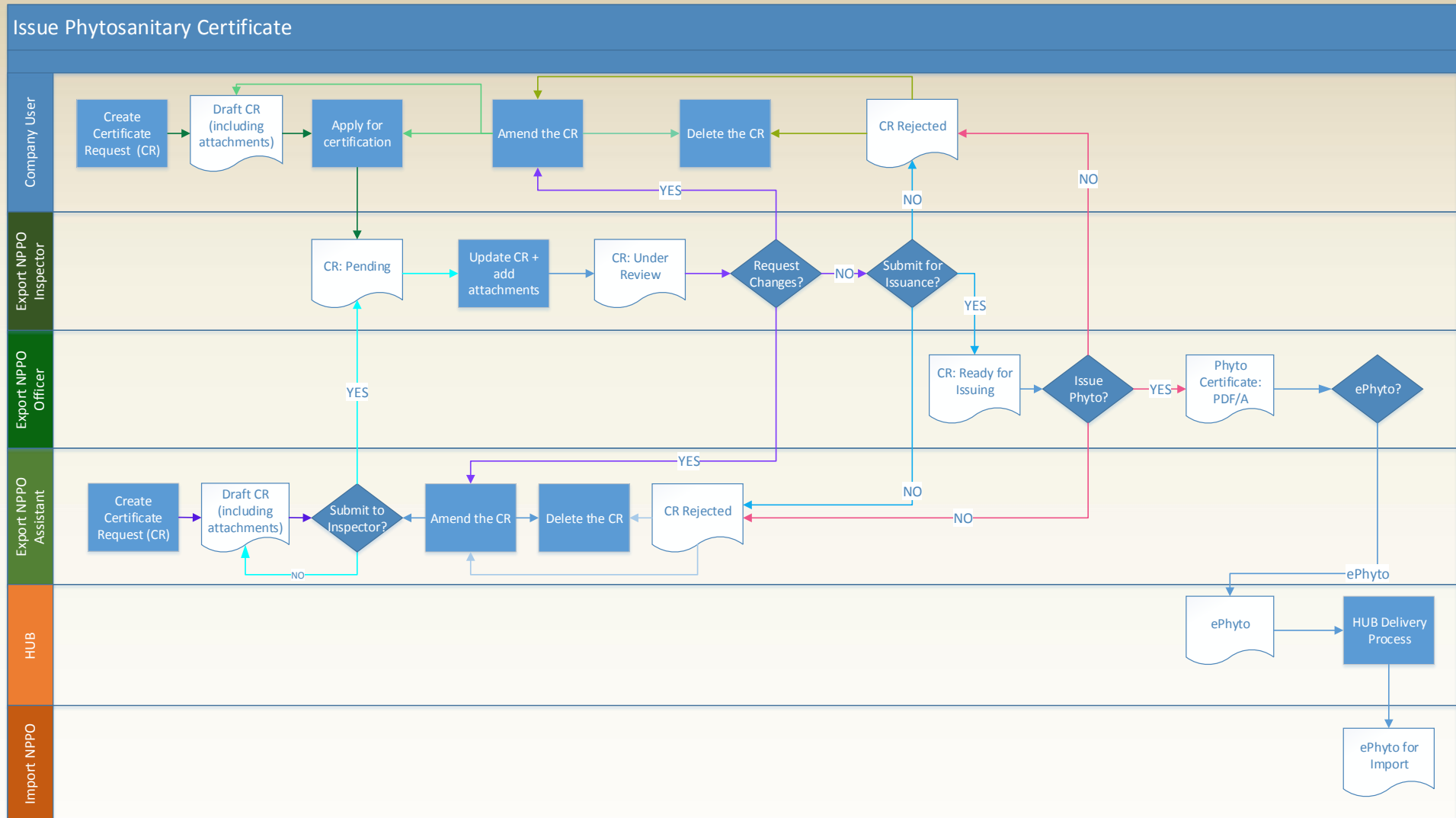
GeNS

Produce ePhyto and deliver them through the Hub





# Protecting the world's plant resources from pests



# GeNS – Re-export certificate

Company user or NPPO assistant

Certificate request: entering data consignment and  
attach original certificate

NPPO exporting country, inspector and officer  
As for export certificate

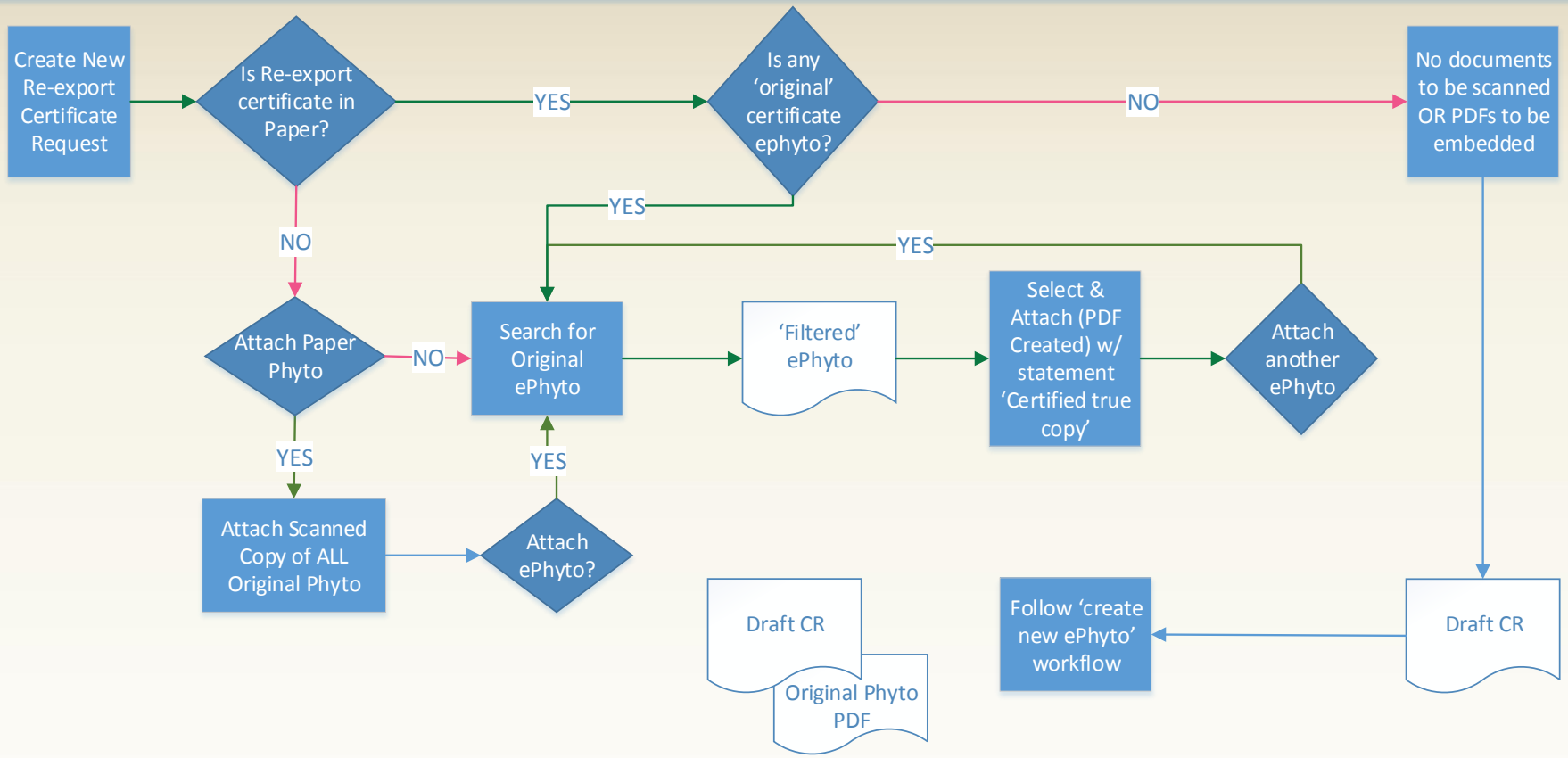
GeNS

Produce ePhyto for re-export and deliver them  
through the Hub



## Re-export Workflow

Company User / NPPO Assistant



# GeNS – Withdrawal certificate

Company user

Certificate withdrawal request:

NPPO exporting country, inspector  
or assistant : Check withdrawal request

NPPO exporting country, officer  
Withdraw certificate

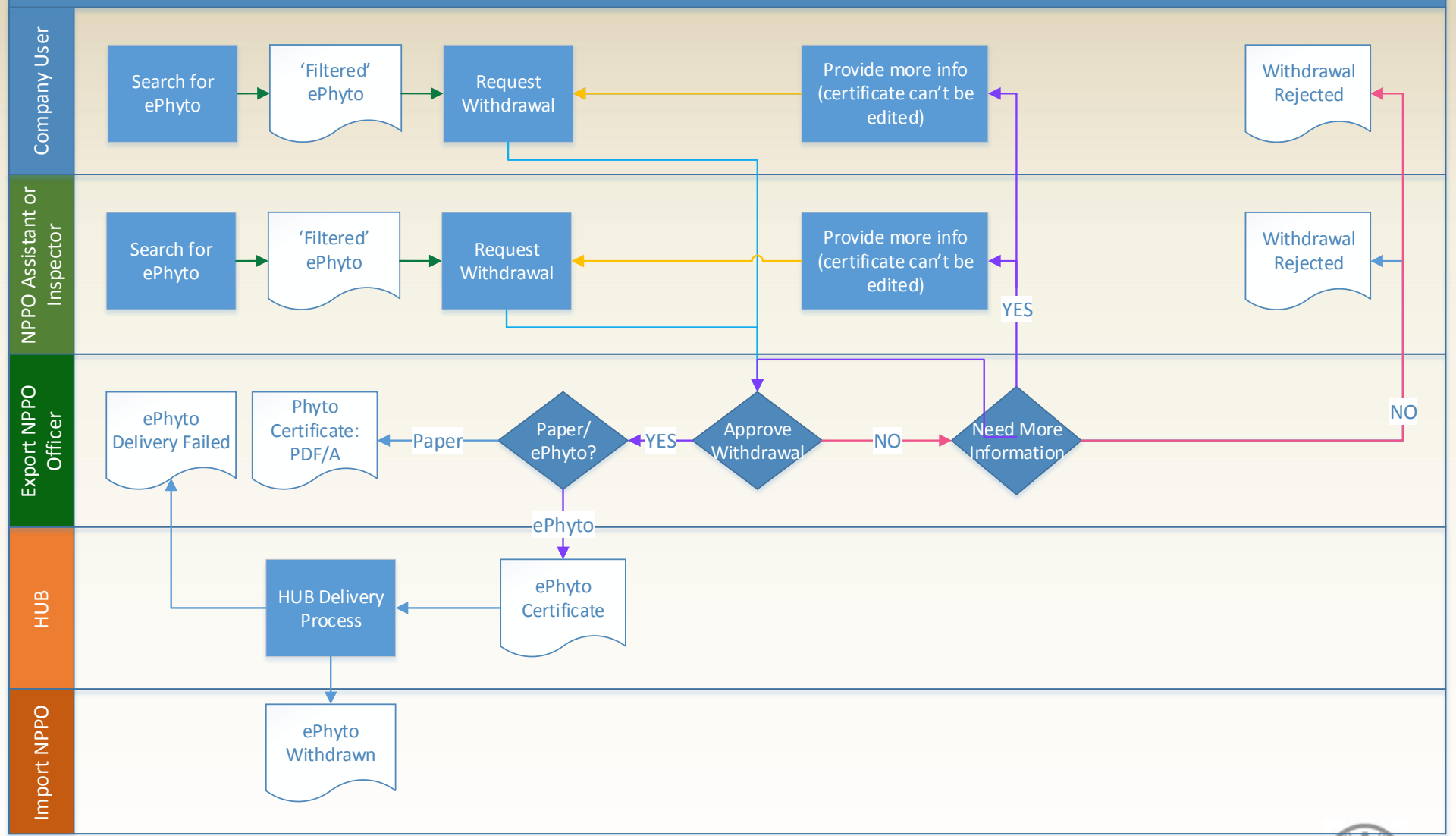
NPPO exporting country, assistant  
Create and amend withdrawal request

GeNS

ePhyto withdrawal message to Hub



## Withdraw Workflow





ICC

international  
computing  
centre

IT SOLUTIONS  
FOR THE  
UN FAMILY

GeNS will use harmonized contents:

- ISO country codes
- Selected UNECE codes (e.g. means of transport)
- Scientific names of plants and pests (EPPO)
- Product description needs further work

Which countries can provide their lists to IPPC ePhyto Steering Group? E.g. seeds, wood, timber







ICC

international  
computing  
centre

IT SOLUTIONS  
FOR THE  
UN FAMILY

Which is, in your perspective, the  
“MUST HAVE” feature of the GeNS ?

*...think about compliancy, operational,  
functional, technical and non technical  
requirements...*



Start writing ideas, thoughts, concerns on the GeNS considering your current operational environment, be synthetic you will be asked to expand the concept if needed

Protecting the world's plant resources from pests



ICC

international  
computing  
centre

IT SOLUTIONS  
FOR THE  
UN FAMILY



**International Plant Protection Convention**  
Protecting the world's plant resources from pests

