

WHY IS EPHYTO?

ePhyto is short for "electronic phytosanitary certificate".

The IPPC ePhyto Solution is the electronic certification system that has three core components;

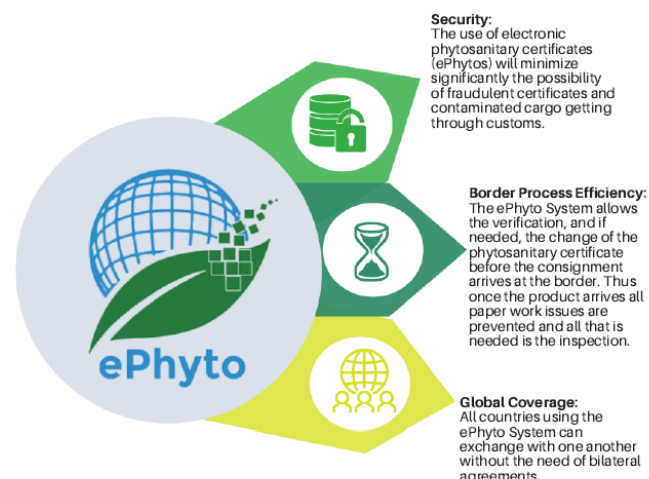
The Hub: a system to facilitate the exchange of ePhytos between National Plant Protection Organizations (NPPOs).

The GeNS: a centralized web-based system that allows countries without their own system to produce, send and receive ePhytos through the Hub.

Harmonization: harmonized and standardized approach to format, structure, and codes (where applicable) in the certificate exchange process.

WHY IS EPHYTO IMPORTANT FOR INDUSTRY?

The ePhyto Solution is designed to significantly improve security, border efficiency, and global coverage, making the movement of goods across borders safer, faster, and cheaper.



As of May 2020, there are over 80 countries registered in the system, including all Member States of the European Union (EU) that connect to the ePhyto Hub via the EU system -TRACES. Forty of these countries (including the EU, Argentina, Chile, New Zealand, Ghana, Morocco and the USA) are in production and are available for case study tests. In 2020, we expect to see increases in the list of countries in production, and thus available for case study participation. For an updated country registration list [click here](#).

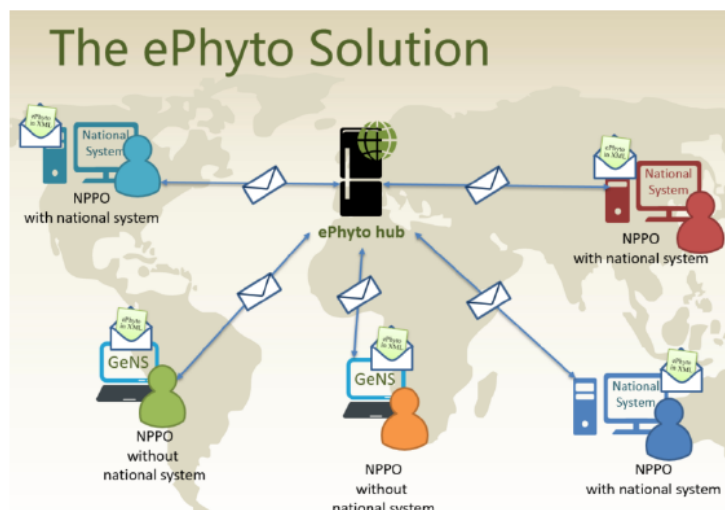


Figure 1: The exchange of ePhytos takes place through the Hub. Countries can connect to the hub with their own national system or, if they do not have one, use the GeNS to send, produce and receive ePhytos. All countries connected to the Hub exchange through a standardized message approach.

WHAT ARE THE EPHYTO INDUSTRY ADVISORY GROUP (IAG) CASE STUDIES ABOUT?

The IAG Industry representatives via the IAG are working to provide expertise regarding the commercial implications of the ePhyto Solution. One way to do this is to identify shipments to be involved in "case studies" to analyze the commercial, custom, and regulatory impacts of implementing the ePhyto Solution on physical commodity trade flows.

Results from industry case studies will be used to improve the functioning of the Solution, as well as to provide guidance as the trade moves forward with electronic documents and paperless execution

INITIAL FINDINGS IN THE IAG CASE STUDIES

So far, case studies have been conducted or will soon be conducted in countries including: Argentina, Chile, The Republic of Korea, Mexico, Morocco, the Netherlands, New Zealand and United States, with others to come soon. The IAG's top priority is to bring in as many countries and commodity flows as possible. Early observations from the case studies reveal some positive feedback such as time and cost savings, ePhyto's contribution to greater efficiency and ease of export/import.



Ease of system use by NPPOs



Good communication between exporters and end users



Good communication between exporters and government phyto offices



All round eagerness and enthusiasm from traders to advance the case studies and test the ePhyto Solution

As we go forward with case studies, it is critical to ensure participation across multiple commodities and countries. We need more case studies to analyze benefits, gaps for improvement, and areas needing support – i.e. getting more countries enrolled into the Hub - that must be addressed to ensure the ePhyto is feasible and accessible to all stakeholders involved. One of the main objectives of these case studies is to collect hard data that will drive decisions as the ePhyto Solution Project enters its final phases.

The ePhyto case studies are supported by:

Displayed in no particular order



HOW TO GET INVOLVED

Your involvement in the ePhyto Solution case studies is welcomed and encouraged!

If you are an exporter, importer, or industry representative:

1. Work with IAG colleagues and industry leads to get everyone familiarized and interested in participating in case studies
2. Communicate with your local NPPOs to learn the latest updates on which countries are now accessible and which may still need to make progress on getting enrolled in the Hub
3. Promote communication between trade representatives and NPPOs
4. Identify potential trade flows
5. Ensure all parties are familiar with the case study process
6. Communicate and record your observations as you go through the process
7. Work with trade execution colleagues to ensure the full details about the impacts of ePhyto on the flow of goods are being communicated

If you are an NPPO and want to enrol to IPPC ePhyto Solution:

1. [Click here](#) to understand your options and requirements
2. Reach out to ippc-ephyto@fao.org
3. Get involved with the IPPC Secretariat and the IAG

If you are a case study participant:

1. Thank you for your participation!
2. Keep communicating with your industry liaison to advise any issues, concerns, or benefits observed during the case study

Your participation and experience will contribute to the improvement of the system and support its efficient implementation.

The ePhyto Solution: www.ippc.int/en/ephyto/
International Plant Protection Convention (IPPC)
Viale delle Terme di Caracalla, 00153 Rome, Italy
Tel: +39065705 4812 | email: ippc-ephyto@fao.org