

Container Packing App : CTU Code & Hitchhiker Pests

Gub McNicoll

Program Manager, Strategic Initiatives

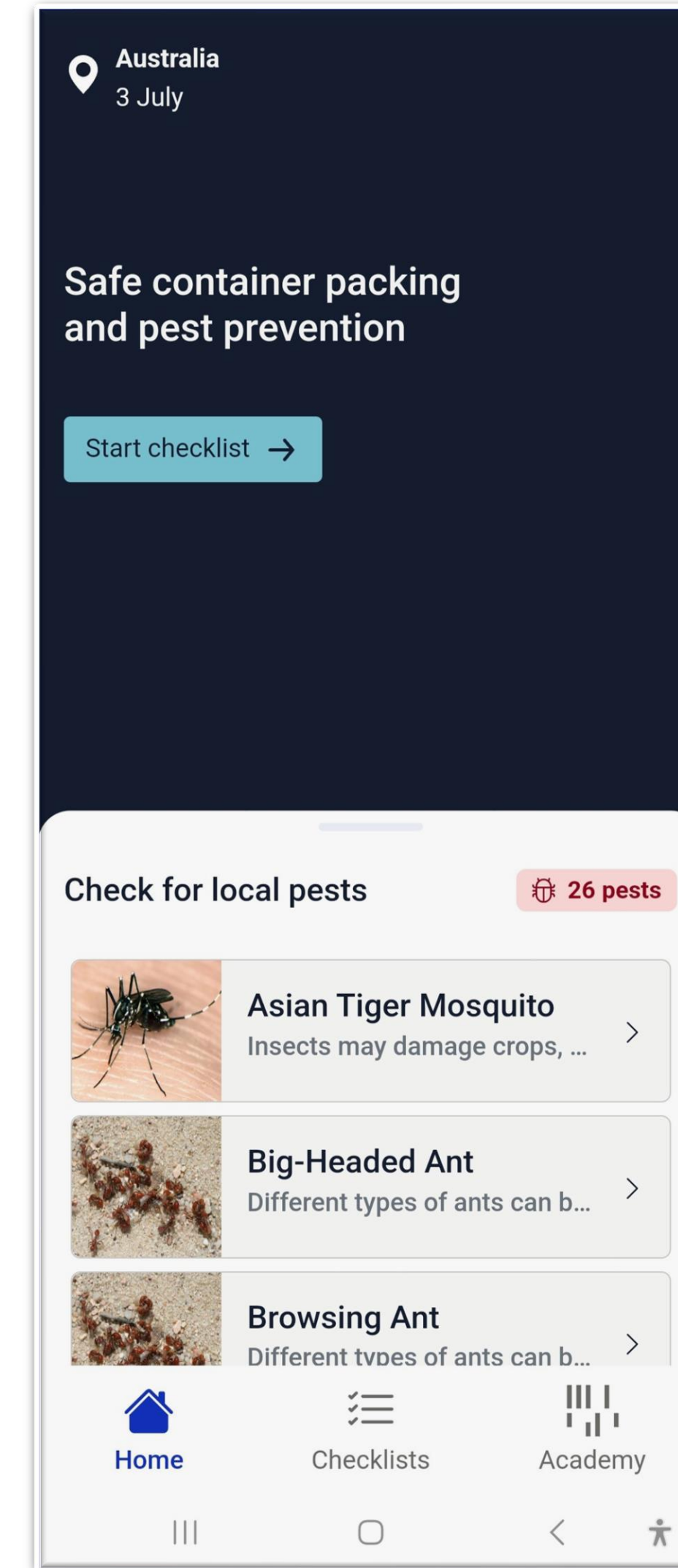
18 July 2023

Container Packing App

Microlearning app, combines:

- Packing Checklist Questions from CTU Code
- Hitchhiker Pest Warnings

- Free-of-charge
- Ongoing point-of-contact, with packers



Container Packing App

Just in Time, Just Enough, Just for Me

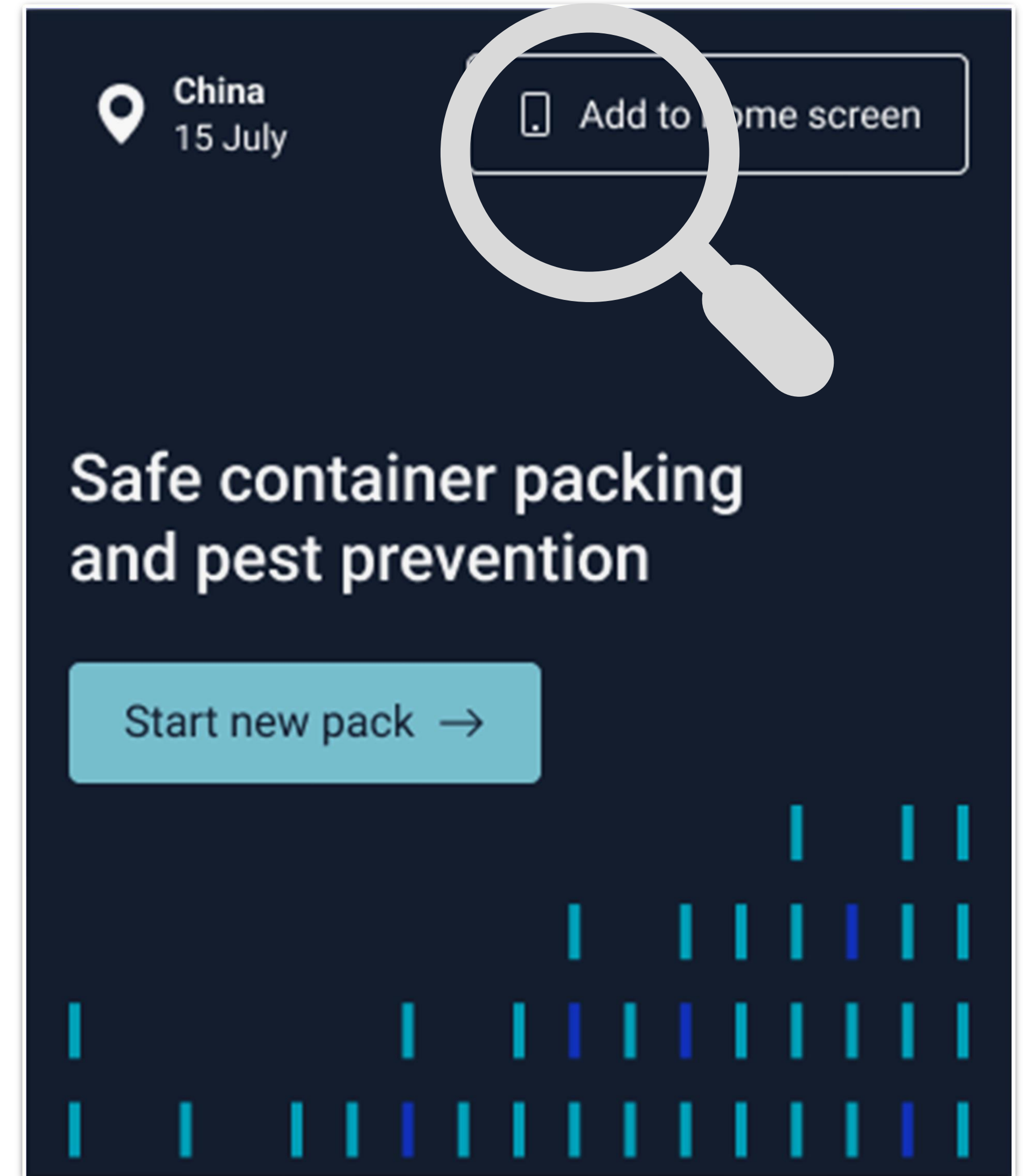
Browser App

- feels like a native app whether iPhone or Android

Uses contextual triggers from your, such as:

- location
- season
- time of day

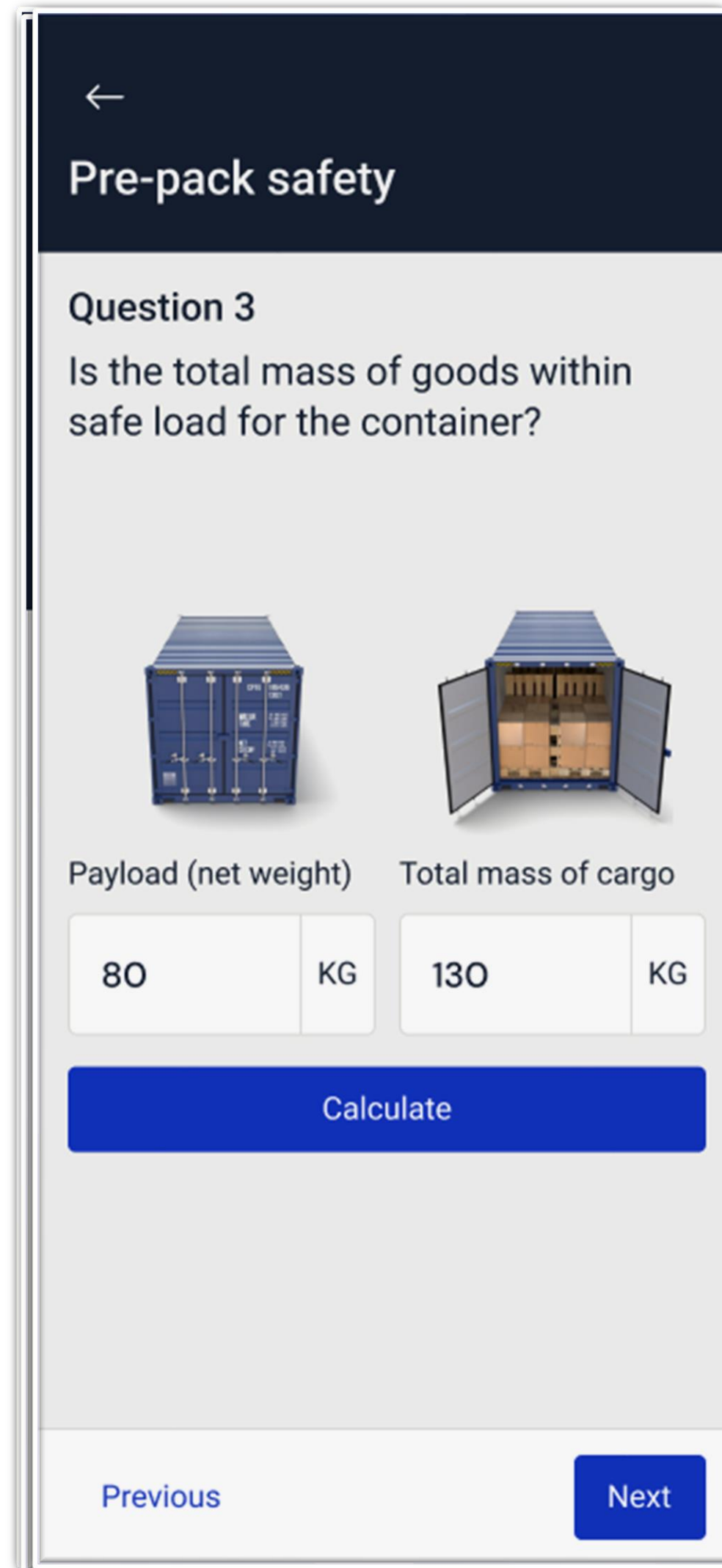
to provide customized content.



Container Packing Checklist

The app uses:



- Simple questions
- Animations
- & Tools



The screenshot shows a mobile app interface for 'Pre-pack safety'. At the top is a dark blue header with a back arrow and the title 'Pre-pack safety'. Below this is a section titled 'Question 3' with the text 'Is the total mass of goods within safe load for the container?'. There are two illustrations: a closed blue container on the left and an open container filled with boxes on the right. Below the illustrations are two input fields. The first is labeled 'Payload (net weight)' and contains the value '80' followed by a 'KG' unit. The second is labeled 'Total mass of cargo' and contains the value '130' followed by a 'KG' unit. A large blue 'Calculate' button is positioned below these fields. At the bottom of the screen are two buttons: 'Previous' on the left and 'Next' on the right.

←
Pre-pack safety

Question 3
Is the total mass of goods within safe load for the container?

Payload (net weight) Total mass of cargo

80 KG 130 KG

Calculate

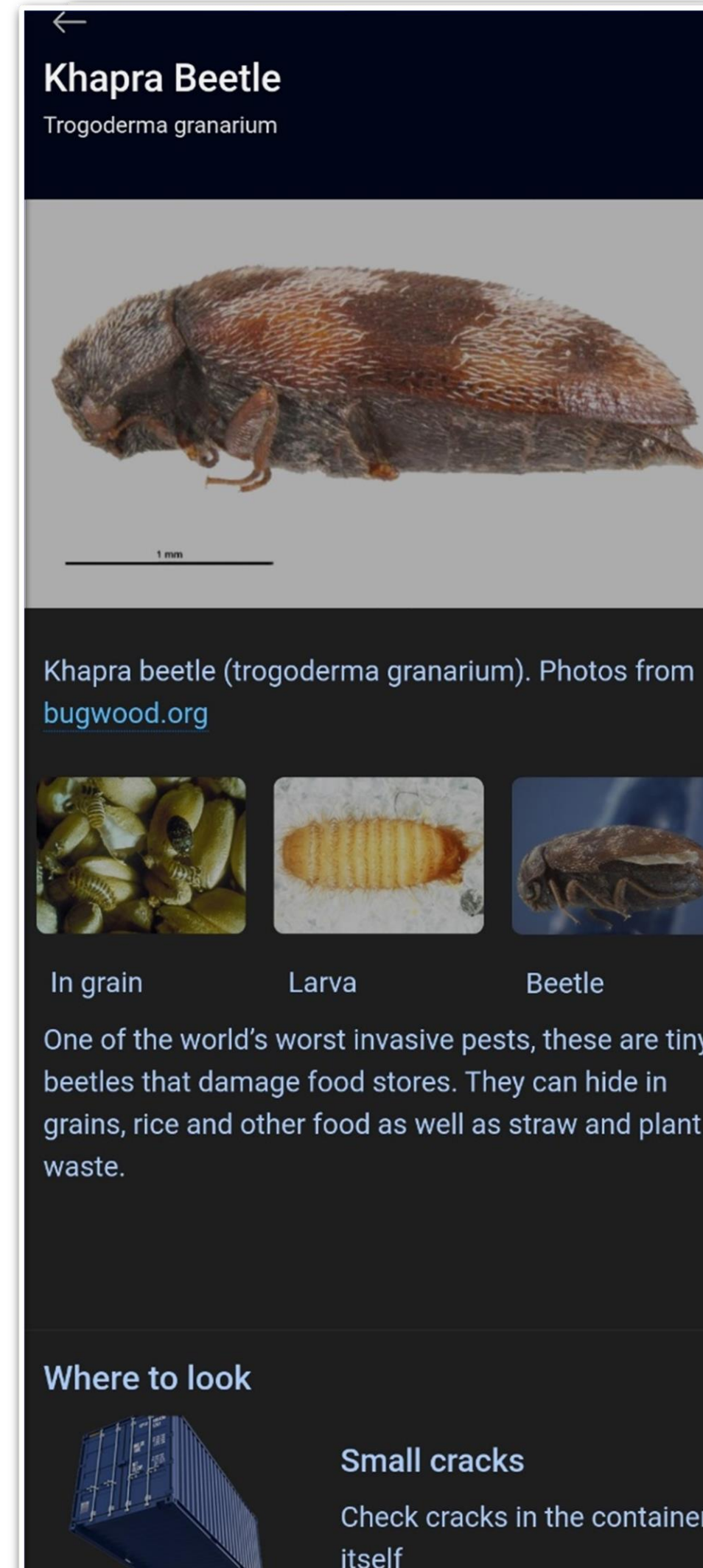
Previous Next

... to minimize involuntary non-compliance

Hitchhiker Pest Warnings

You only need to know about the pests:

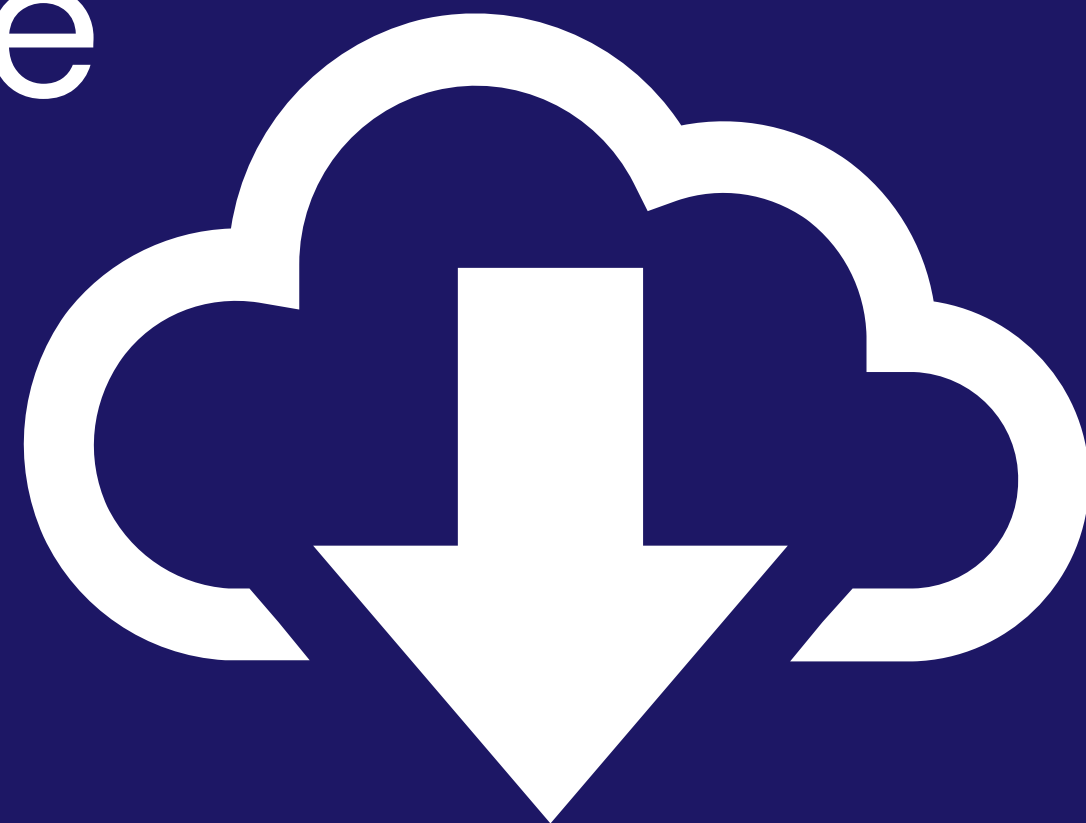
- in your area
- in your current season



Information limited to:

- what to look for
- where to look
- what to do

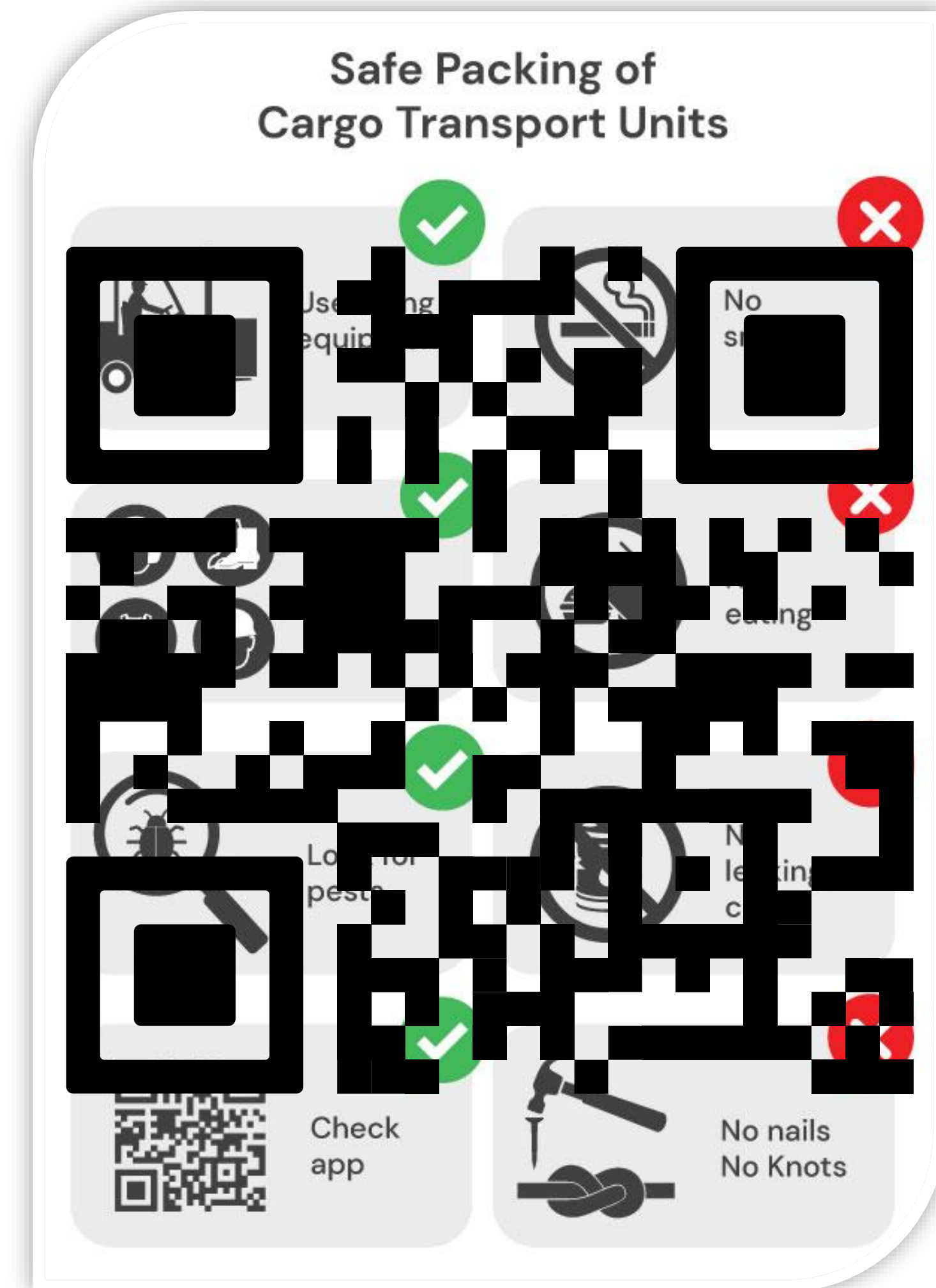
Beta Phase



Testing and Feedback

**The demo version is available to download.
We would love to know:**

- What other functionality would be useful?
- How can we get this into the hands of end-users?
- What sorts of integrations would be of value to your organizations?





Questions