



Pacific
Community
Communauté
du Pacifique



35th TC-RPPO Meeting

PACIFIC PLANT PROTECTION ORGANISATION (PPPO) UPDATE ON IMPLEMENTED ACTIVITIES

PPPO Executive Secretary Update - 25th October 2023

Bogota, Colombia

OUTLINE

- Introduction
- PPPO Implemented Activities
- Partnerships/Collaboration
- Challengers
- Way forward



Pacific
Community

Communauté
du Pacifique

General Information - PPPO

PPPO Full Board

- Consist of 27 member countries in SWP region
- 22 Pacific Island Countries & Territories (PICTS)
- 5 Founding Members (Australia, New Zealand, France, Great Britain and USA)
- Meets triennially and its mission, vision is supported and mandated in the PPPO constitution.
- The PPPO Constitution was enacted in 1994 and was amended and revised in 2006.

PPPO Executive committee members

- 3 Sub-regions (Micronesian, Polynesian & Melanesian)
- 2 member countries represented from the 3 sub-regions (Chairmanship rotates amongst the 3 sub-regions, Vice-Chairman is elected between the Metropolitan members)
- Opportunity to meets every year & discuss PPPO priorities/ issues/ PPPO new work plan (2019 – 2023)

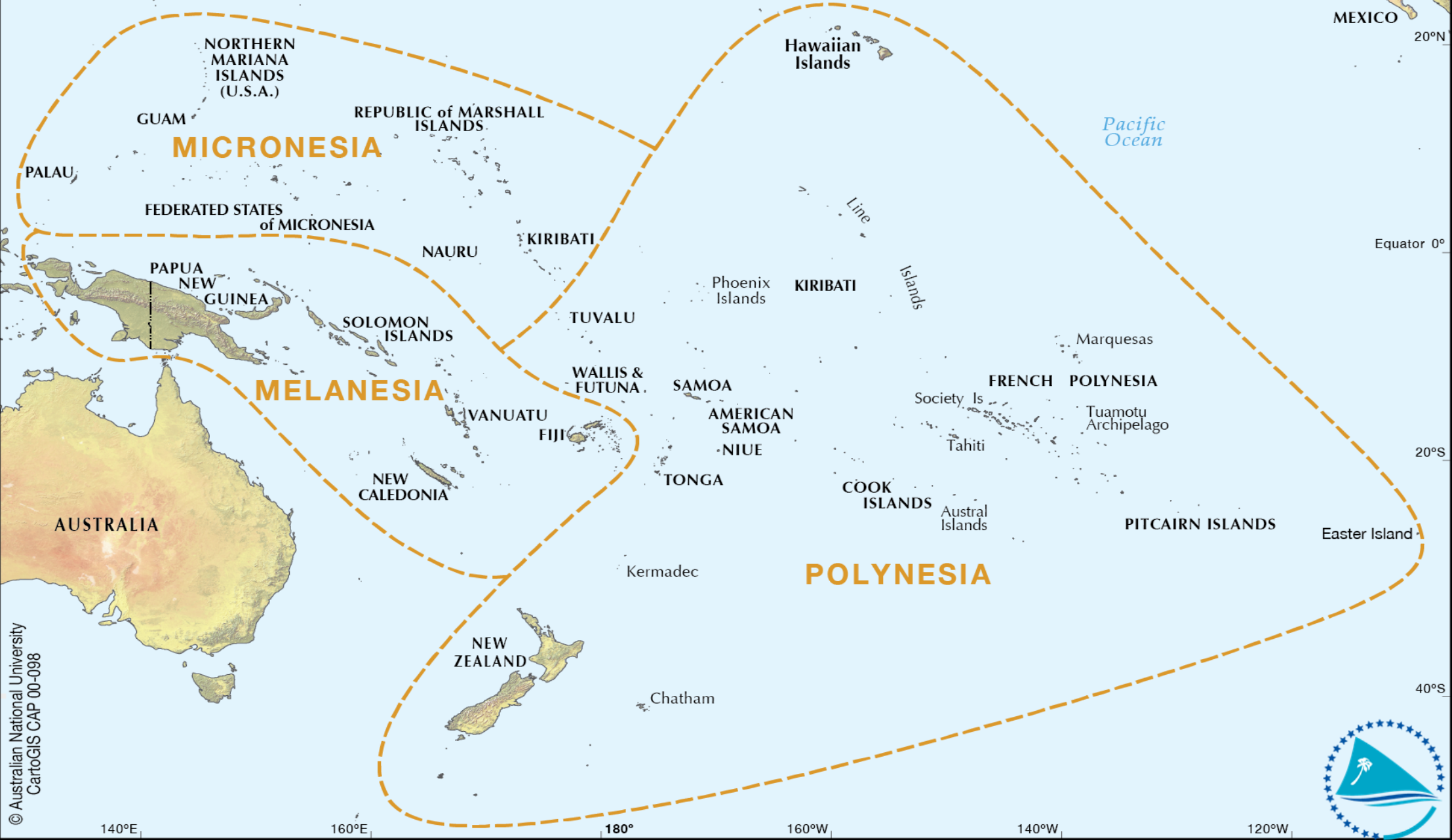
PPPO Executive Secretariat

- Housed in the LRD, SPC and look for potential funding from donors
- Provides the secretariat role and the glue for the PPPO members
- Capacity building for the PPPO members (Surveillance, ID & Authentication, Early Warning Systems, Market Access Requests)
- Sharing of information at the National, regional & international level (PLD: <http://www.spc.int/pld/>)
- Attend regional and international meetings, shares information with PPPO Member countries

NPPPO's

- National Reporting Obligations (NRO's)
- All other Phytosanitary issues at Pre-border, Border & Post-Border

PPPO - 3 Sub-Regions



© Australian National University
CartoGIS CAP 00-098



Pacific Community
Communauté du Pacifique



Pacific IPPC and RPPO members

Membership	IPPC	PPPO	APPPC
American Samoa			
Cook Islands			
FSM			
French Polynesia			
Guam			
Kiribati			
RMI			
Nauru			
New Caledonia			
Niue			
CNMI			
Palau			
PNG			
Fiji			

Pacific IPPC and RPPO members

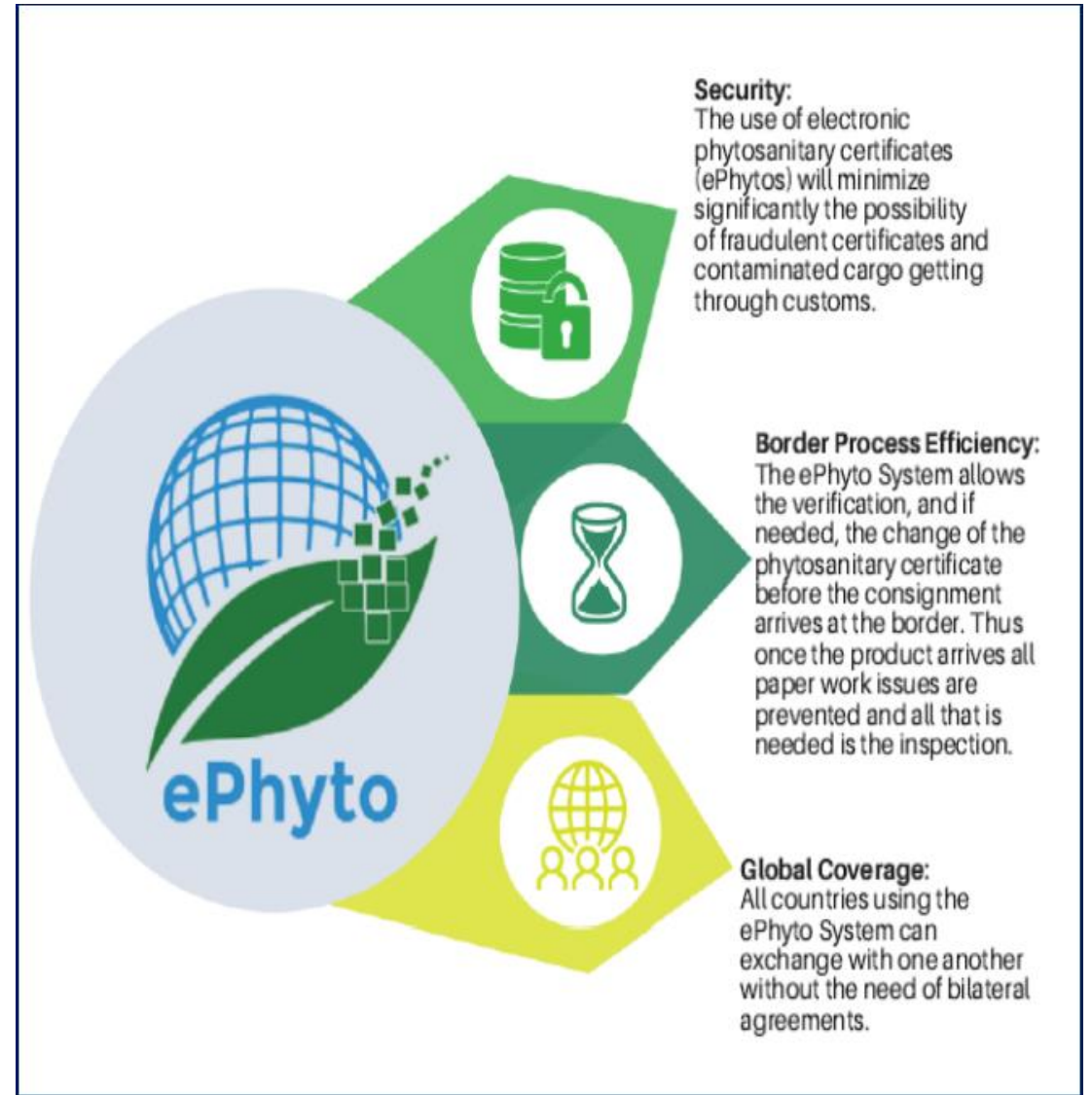
Membership	IPPC	PPPO	APPPC
Pitcairn			
Samoa			
Solomon Islands			
Tokelau			
Tonga			
Tuvalu			
Vanuatu			
Wallis and Futuna			
Australia			
France			
New Zealand			
USA			



Pacific Community
Communauté du Pacifique

Collaboration with Development Partners

- Australia & New Zealand Government
- Engaged and recruited the ephyto coordinator
- Identified countries for the phase 1 roll out plan
- Identified countries for the phase 2 roll out plan
- Capacity building training – ongoing
- Test run on ephyto certificates between phase 1 countries



PPPO Regional ePhyto Programme

Phase 2 Northern Pacific countries – French Polynesia, Nauru, Kiribati, Palau, FSM, RMI. This may also include American Samoa.

Facilitate the Master Trainer program for all countries – ensure sustainable application of ePhyto for region once project funding has ended.

Carry out the first Benefit Analysis for ePhyto use for the region. There needs to be base line data on how much of the benefits of using ePhyto is being realized by the countries. Directly this will assist countries make an informed decision on IPPC's Sustainable funding model and whether the benefits outweigh the costs for each country.



Benefits of an ePhyto *(the electronic certificate)*

- Clearance of commodities is expedited.
- The risk of fraud/fake certificates is reduced.
- The risk of certificate loss or damage is minimized
- Costs of paper and posting are saved.
- NPPO of importing countries are able to address certification problems in advance of commodity arrival.
- Efficiencies are improved by reducing data entry and validation.

Benefits of the ePhyto Solution *(Hub + GeNS)*

- The structure and transmission of ePhytos are harmonized globally;
- Allows equal participation to countries without national system.
- NPPOs do not need to set up bilateral systems to connect with each other.
- It is possible to link with other international E-Systems (e.g. single window)




Pacific
Community
Communauté
du Pacifique

Pacific Pest List Database (PLD)

Old PLD

- Built in 2003.
- Older technology.
- Limited functionality and
- Limited reporting capability



The screenshot shows the website header with the Pacific Islands Pest List Database logo and navigation menu. The main content area features an introduction to the database and contact information for the Plant Protection Service.

**PACIFIC ISLANDS
PEST LIST DATABASE**

PPS HOME

HOME
REPORTS
COUNTRY ADMINISTRATORS

PLANT PROTECTION SERVICE
Secretariat of the Pacific
Community

Address: Private Mail Bag
Suva, Fiji Islands.

Ph: (+679) 3370 733

Fax: (+679) 3370 021

Email: pestlist@spc.int

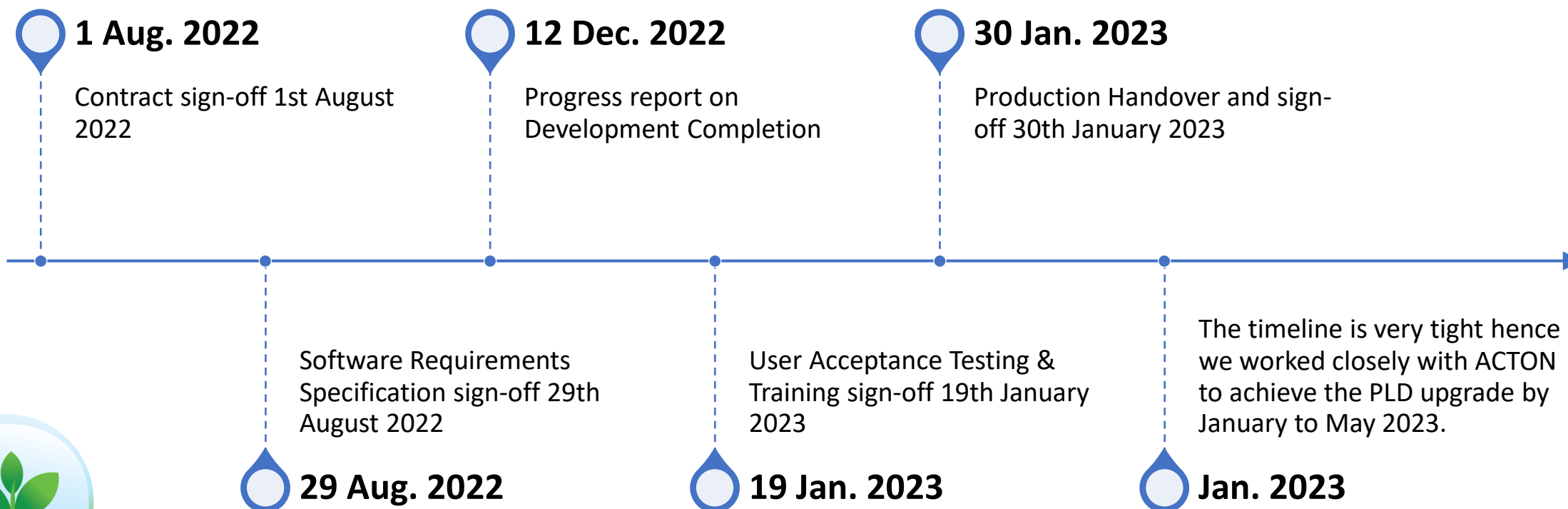
The Pacific Islands Pest List Database

Introduction

The Pacific Islands Pest List Database (PLD) stores records of pests that are currently known to affect agriculture, forestry and the environment in Pacific Island countries and territories (PICTs). The development of the Pacific Islands PLD was identified and requested at three regional consultations: Pacific Plant Protection Organisation meeting, 1998; Regional Technical Meeting on Plant Protection, 1999; and Plant Protection in the Pacific meeting, 2001.

PICT trading partners, often other Pacific islands, need to know the risks involved when planning to trade in a particular commodity. To allow trading to start, PICTs are required to provide a list of pests and diseases for the traded commodity. Previously, each PICT kept their own pest list and furnished it only when requested. Now, this information can be shared on-

New PLD - 5 Key Milestones

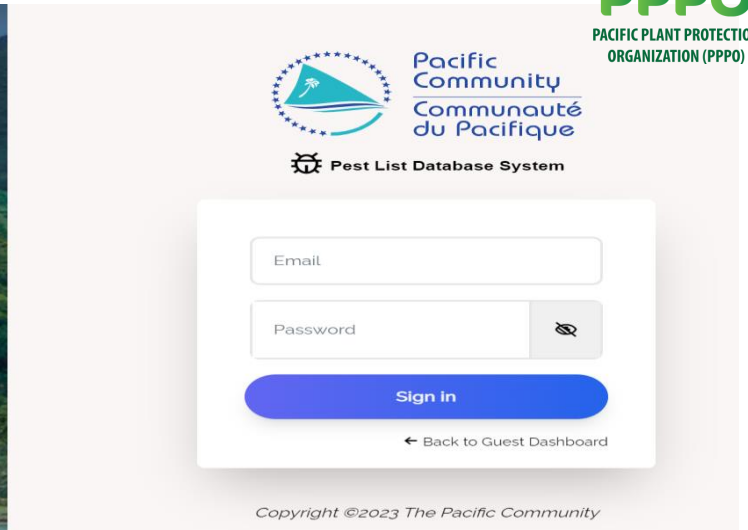
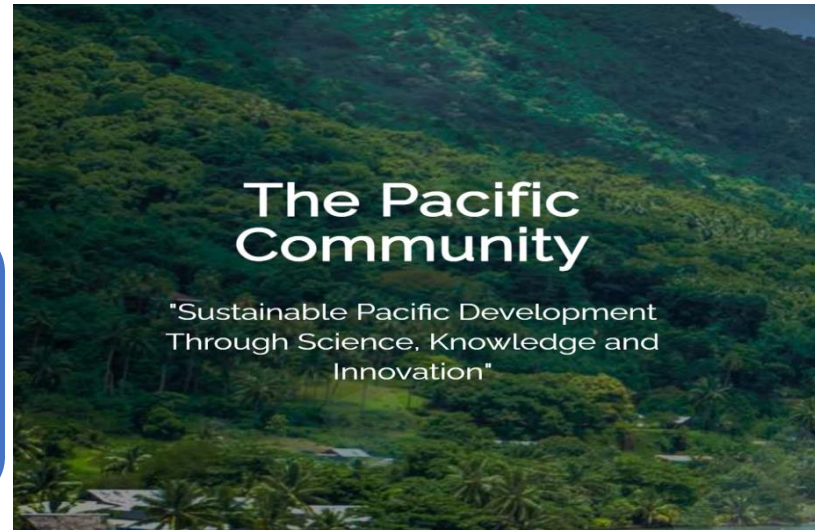


New PLD

PLD stores all data in SPC server
- acts as a central cloud-based
system

Wide range of users – most
processes are tracked by the
PLD

Offline capability of entering
data



The Pacific Community (SPC)
Pest List Database

[Home](#)

[Browse Occurrence](#)

[Browse Host](#)

[Browse Pest](#)

[Login](#)

Pacific Islands Pest List Database

The Pacific Islands Pest List Database (PLD) stores records of pests that are currently known to affect agriculture, forestry and the environment in Pacific Island countries and territories (PICTs). The development of the Pacific Islands PLD was identified and requested at three regional consultations: Pacific Plant Protection Organisation meeting, 1998; Regional Technical Meeting on Plant Protection, 1999; and Plant Protection in the Pacific meeting, 2001. PICT trading partners, often other Pacific islands, need to know the risks involved when planning to trade in a particular commodity. To allow trading to start, PICTs are required to provide a list of pests and diseases for the traded commodity. Previously, each PICT kept their own pest list and furnished it only when requested. Now, this information can be shared on-line...





[Read More](#)

New PLD

Windows Server 2019 Standard Edition that supports IIS, SQL Server and SQL Server Reporting Services

Regional data can be accessed on the Regional dashboard – no account.

Pests

Genus ↑↓ ∨	Species ↑↓ ∨	Common Name ↑↓ ∨	Order ↑↓ ∨	Family ↑↓ ∨	Group ↑↓ ∨	Action
Abacoleptus	paradoxus		Coleoptera	Carabidae	arthropods	 
Abacomorphus	caledonicus		Coleoptera	Carabidae	arthropods	 

New PLD

Ability to generate country reports and comparative reports between countries

Conduct surveillance – different forms for the types of surveillance.

PLD will automatically send data to lab users and station officers when a new data is entered.

Surveillance

AGM Surveillance
Submission



Ant Surveillance



BMSB Surveillance



CRB Surveillance



Local Sample
Submission Form



Fall Army Worm
Surveillance





Pacific
Community
Communauté
du Pacifique

New Pacific Pest List Database (PLD)



Information technology has helped people to evolve with time.



We can have a robust system but without quality data (timely, accurate, valid, consistency) our system will give us unreliable information.

<https://pld.lrd.spc.int/>



Pacific
Community
Communauté
du Pacifique



INTERNATIONAL YEAR OF
PLANT HEALTH
2020



PPPO Talanoa Session

- An opportunity to continue to stay connected with the PPPO Members in the region.
- Capture the Issues and Challenges, Success Stories, Lessons Learned and Way forward.
- **THEME: CONNECTED, INFORMED & PREPARED (CIP)**
- *A PPPO family where no member is left behind*

PACIFIC PLANT PROTECTION ORGANISATION

VIRTUAL
TALANOA
Session

NPPO

PHYTOSANITARY

Partnership and Collaborations



European Union (EDF 11)

- Biosecurity & SPS
- Value Chains

Australia Department of Agriculture Fisheries & Forestry (DAFF)

- Pacific Export Plan (PEP)
- Pacific Pest List Database Upgrade
- ePhyto

Green Climate Fund

- Transboundary Pests/ invasive species exacerbated by effects of Climate change

New Zealand Ministry of Primary industries (MPI)

Establishment of a holistic system to facilitate the development, management, monitoring, and evaluation of export systems including export plans

Review of the Phytosanitary Certification System (PCS) and Phytosanitary Capacity Evaluation (PCE)

Establishment of a robust e-operational and GIS information database system for export facilitation

Rollout of ePhyto in line with the Pacific Community, Pacific Plant Protection Organisation, Regional ePhyto Implementation Plan, 2020-2022

MPI contribution to the implementation of PPPO Workplan and core functions – based on approved PPPO Costed Workplans



Updates

ISPM 46 Annex proposal – Taro (*Colocasia esculenta*)

- PPPO agreed to develop a proposal for Taro as an annex to ISPM 46
- This was developed by Australia in consultation with PPPO members
- Given the restricted time, limited consultation was conducted with other RPPOs
- It is understood the TPCS wishes all proposals for Annexes be developed so input can be provided by all during the call for information



PPPO

PACIFIC PLANT PROTECTION
ORGANIZATION (PPPO)





ISPM 46 Annex proposal – Non-complex commodities

- PPPO members considered coconut is a highly traded critical commodity for the SW Pacific region – from the tree of life
- Advice was that there are limited pests and measures, a commodity standard was perhaps the incorrect mechanism to use
- As a result, Australia proposed an annex to ISPM 46 to deal with “simple” commodities (that do not fit elsewhere)



Challengers

&

Pest outbreaks

- Fall Army Worm (FAW)
- Coconut Rhinoceros Beetle – G Strain
- Brown Marmorated Stink Bug (BMSB)
- Khapra Beetle
- Exotic Fruit flies
- Invasive Ants
- Fusarium Oxysporum TRO4

Early Detection & Rapid Response

Climate Change

Way Forward

PPPO Work Plan

- Coordination of activities & resources
- Technical expertise
- Donnor Partners – Funding
- PPPO collaboration and engagements

THEME: CONNECTED, INFORMED & PREPARED (CIP)

A PPPO family where no member is left behind



Pacific
Community
Communauté
du Pacifique

THANK YOU



PPPO

PACIFIC PLANT PROTECTION
ORGANIZATION (PPPO)



Pacific
Community

Communauté
du Pacifique