

19th Session of the Commission on Phytosanitary Measures

#Planthealth for food security, environmental protection
and safe trade

CPM 19

Joint management system to address plant, human and veterinary health risks in *Popillia japonica* (Japanese beetle) infested areas

SCIENCE SESSION: THE IMPORTANCE OF PLANT HEALTH WITHIN ONE HEALTH

CASE STUDY (ITALY)





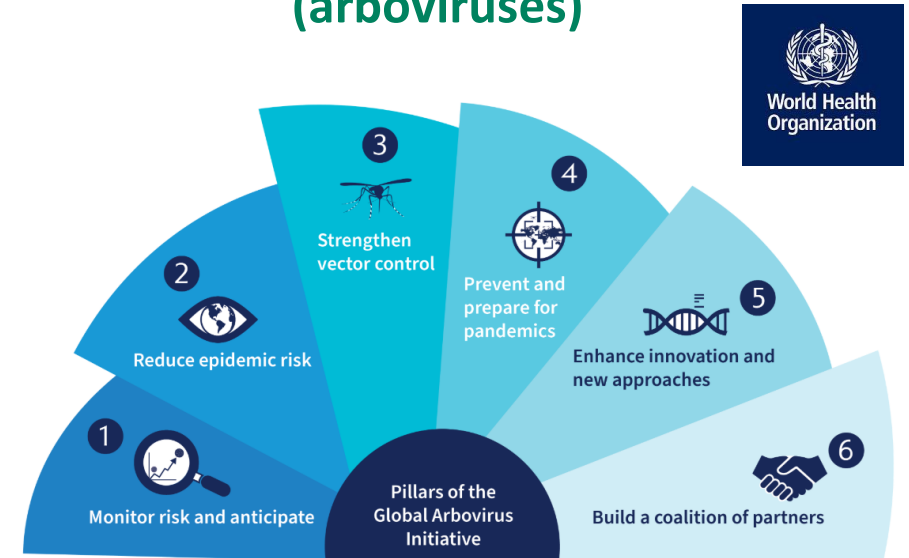
Popillia japonica (Japanese beetle)



Plant risk:

Pest spread outside the infested area by hitchhiking

Mosquitoes, ticks, flies, fleas and lice Vectors of arthropod-borne viruses (arboviruses)



Human and veterinary threats:

Spread of arboviruses such as dengue, yellow fever, chikungunya and Zika viruses

Plant, human and veterinary health risks are addressed by a system management system

Joint management system is aimed to:

- reduce health and environmental impacts
- optimise human and financial resources
- foster cross-functional collaboration and synergy

		<i>Popillia japonica</i> action plan according to Regulation (EU) 2016/2031-IPPC	National Plan for Prevention, Surveillance and Response to Arbovirosis - Resolution WHA 70.16 : An integrated approach for the control of vector-borne diseases (2017)
Agronomic practices	vegetation management	✓	✓
	irrigation management	✓	✓
Disinsectations	treatments to control juvenile stage	–	–
	treatments to control adult stage	✓	✓
Information and communication campaigns	public awareness campaign	✓	✓
	training	✓	✓
Surveillance	Public health surveillance		–
	Specific pest surveillance	–	

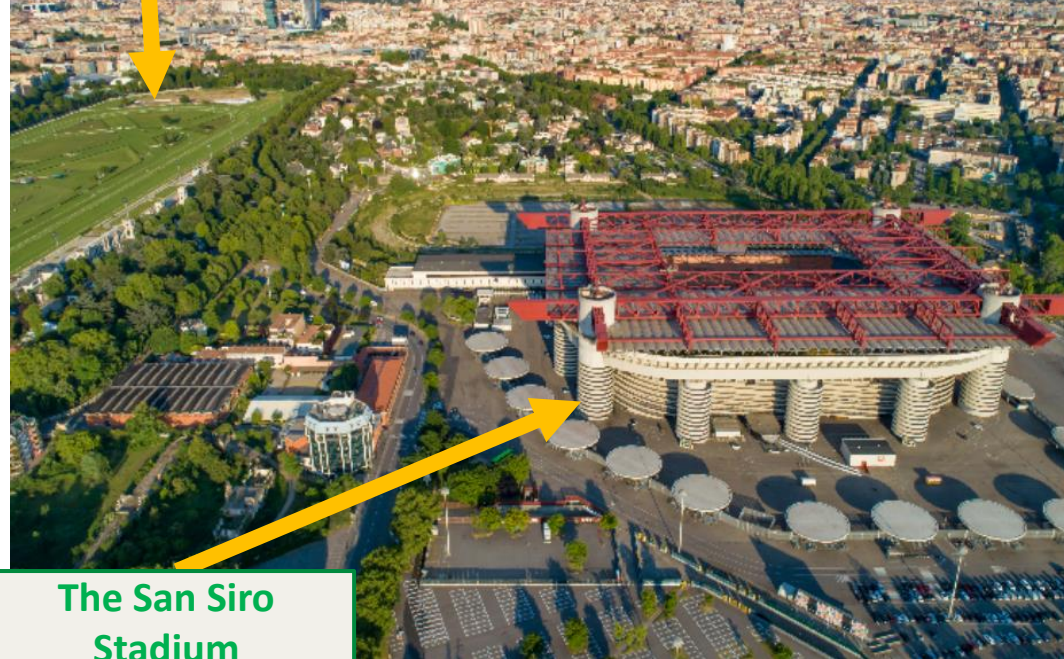
19th Session of the Commission on Phytosanitary Measures

#Planthealth for food security, environmental protection and safe trade

CPM 19

Milan San Siro area

The San Siro
SNAI
Racetrack



The San Siro
Stadium
(Meazza)



Shared calendar



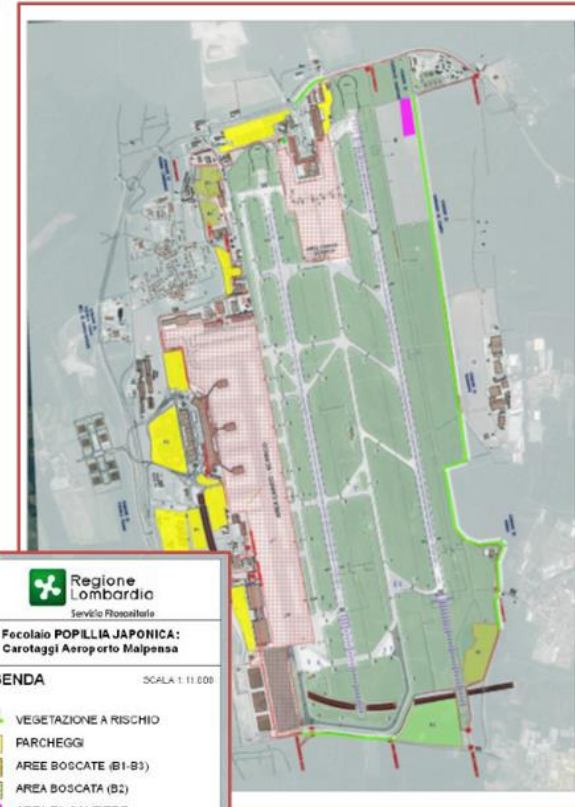
19th Session of the Commission on Phytosanitary Measures

#Planthealth for food security, environmental protection and safe trade

CPM 19

Milan Malpensa airport

Harmonisation of vegetation management practices and disinsection measures



Regione Lombardia
Servizio Fitosanitario

Focolaio POPILLIA JAPONICA:
Carotaggi Aeroporto Malpensa

LEGENDA - SCALA 1:11.000

- VEGETAZIONE A RISCHIO
- PARCHEGGI
- AREE BOScate (B1-B3)
- AREA BOSCATI (B2)
- AREA EX CANTIERE
- AREE A PRATO
- AREA CARICO - SCARICO
- CONFINI COMUNALI

Risk assessment



- ✈ Measures for the vegetation of wooded/sedimentary areas
- ✈ Measures for meadows
- ✈ Measures for parking areas
- ✈ Measures for parking/loading/unloading areas
- ✈ Measures for aircraft

CPM
19

Thank you



Regione Lombardia

Plant Protection Service

mariangela_ciampitti@regione.lombardia.it