

# Implementation of ISPM No. 15 in the EU - in particular consideration of the situation in Germany -

**Dr. Thomas Schröder**

Federal Biological Research Centre for Agriculture and Forestry  
Department for National and International Plant Health  
Braunschweig / Germany



IPPC workshop on practical application of ISPM No. 15  
Vancouver / Canada, 28 February – 4 March



## Implementation of ISPM No. 15 in the EU - in particular consideration of the situation in Germany -

### /// ISPM 15 in the European Union

- General legal requirements

### /// ISPM 15 implementation in Germany

- History (Emergency Measures China 2002/58)
- SWPM used for export
- Import control of SWPM in trade

### /// Summary



## ISPM No. 15 in the European Union 25 member states since 2004



T. Schröder

Federal Biological Research Centre for Agriculture and Forestry  
Department für National and International Plant Health



## ISPM No. 15 in the European Union general legal requirements

### /// Coming into force on 1st of March 2005

- Directive 2000/29/EC amended by 2004/102/EC

### /// Requirements

- Treatment (HT or MB)
- Made from debarked wood (postponed for one year)
- Mark

### /// Transitional regulations for SWPM

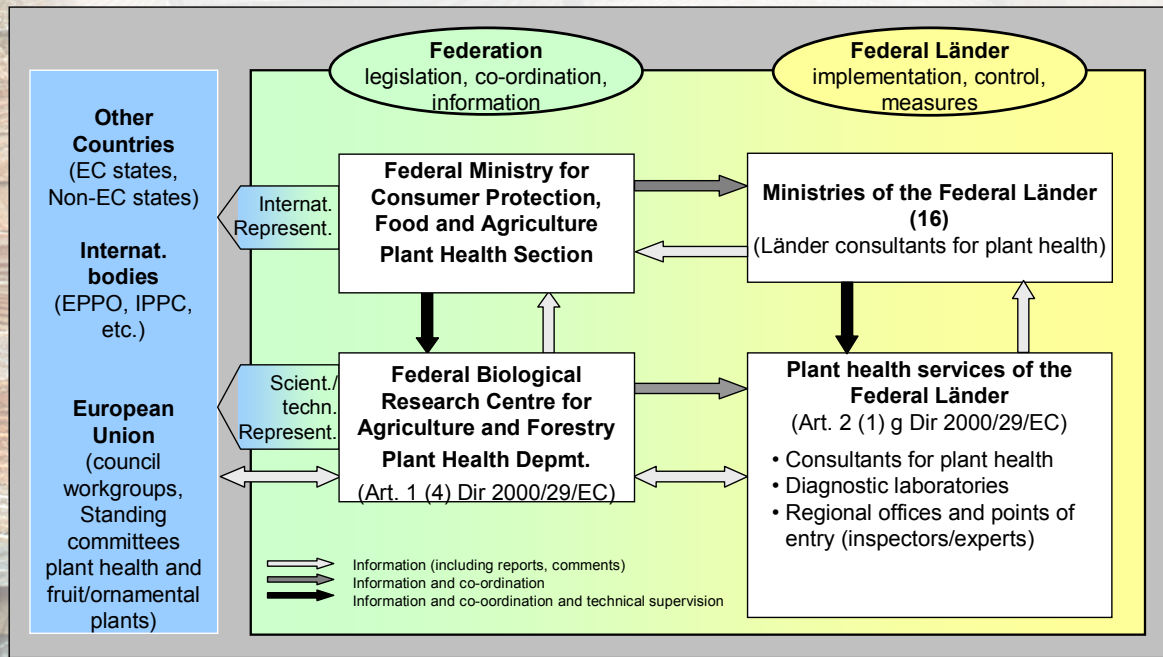
- produced before 28.02.05 ⇒ mark without IPPC-logo
- produced as of 01.03.05 ⇒ mark with IPPC-logo
- Dunnage: debarked wood, treatment and mark acc. ISPM 15  
⇒ Until 31.12.07 bark-free, free of pests, no treatment and mark

T. Schröder

Federal Biological Research Centre for Agriculture and Forestry  
Department für National and International Plant Health



# ISPM No. 15, Implementation in Germany NPPO



T. Schröder

Federal Biological Research Centre for Agriculture and Forestry  
Department für National and International Plant Health



# ISPM No. 15, Implementation in Germany - start in 2002 -

## Start: Chinese Emergency Measures (2002/58)

### ➤ HT-, MBr- treatment

### ➤ Mark

- ✓ registration of companies
- ✓ registration number according ISPM 15
- ✓ control of compliance with ISPM 15 requirements
- ✓ mark according to ISPM 15 without logo

T. Schröder

Federal Biological Research Centre for Agriculture and Forestry  
Department für National and International Plant Health



# ISPM No. 15, Implementation in Germany Guideline



Federal Biological Research Centre  
For Agriculture and Forestry,  
Department for National and International  
Plant Health

**Guideline**  
for application of the IPPC Standard,  
ISPM Nr. 15

*„Guidelines for regulating  
wood packaging material  
in international trade”,*

in Germany

Part A: „Solid wood packaging material for  
export“

In co-operation with:      the plant protection services of  
the federal Länder and  
the Federal Research Centre for  
Forestry and Forest Products,  
Institute for Wood Physics and  
Mechanical Technology of Wood

## Content:

- Requirements for registration
- ISPM 15 translation
- HT-treatment parameter
- Protocol for certification of HT-, MBr-treatment and packaging companies
- specimen of company declaration (export to NL)
- specimen of PPS-certificate (export to NL)

T. Schröder

Federal Biological Research Centre for Agriculture and Forestry  
Department für National and International Plant Health



# ISPM No. 15, Implementation in Germany Registration

## Who can apply for a registration number?

- Treatment companies (HT, MBr)
- Packaging companies
- Companies who stow container with dunnage

## Registered companies (February 2005)

- 272 treatment companies
- 1016 packaging companies
- 248 both treatment and packaging

## Companies are published on BBA homepage without registration number to avoid misuse

T. Schröder

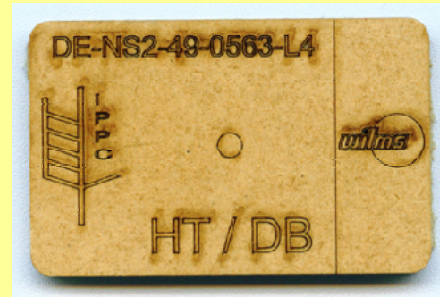
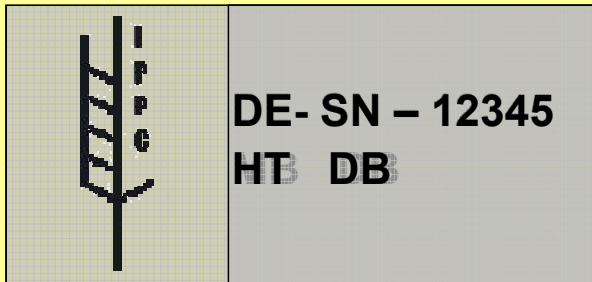
Federal Biological Research Centre for Agriculture and Forestry  
Department für National and International Plant Health



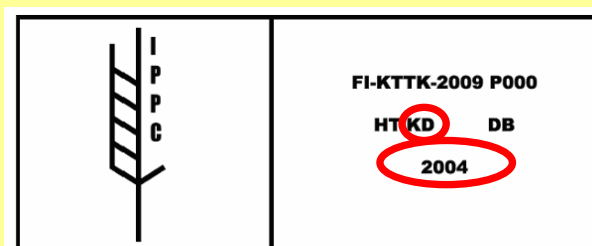
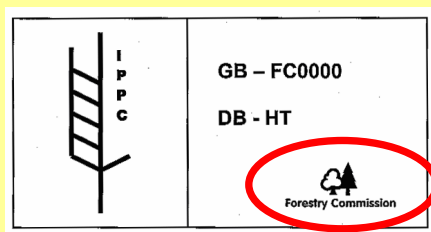
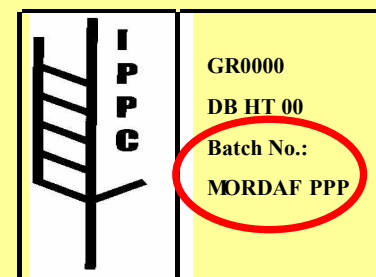
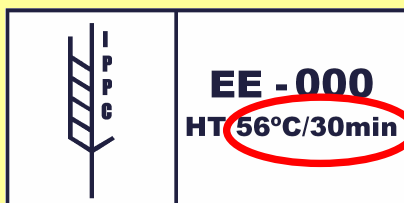
## ISPM No. 15, Implementation in Germany - Mark -

### /// Preferable „burn-in stamp“, „paint with template“

- Professional mark, not „hand painted“
- Removing the mark must destroy it!
  - In special cases plastic- or fibre-plates can be used



## ISPM No. 15, - Mark – examples of other EU memberstates

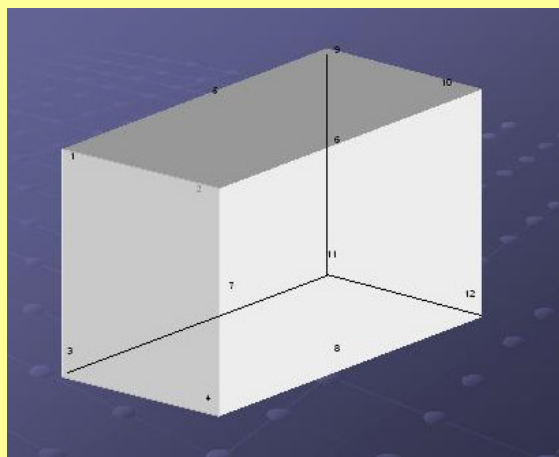


## ISPM No. 15, Implementation in Germany - Control of treatment facilities, HT -

- /// **Sequence check:** at least once a year
- /// **HT as part of normal oven drying**
  - use of time/temperature table
    - treatment chamber parameter are center of attention
    - at least 2 temperature sensors (one way circulation)
    - at least 4 temperature sensors (alternating air circulation)
- /// **HT as phytosanitary treatment without drying**
  - core temperature should be measured
    - at least 2 temperature sensors

## ISPM No. 15 - Control of treatment facilities, HT -

- /// **Other temperature measuring options**
  - e.g. Czech Republic: 10 – 12 calibrated thermometers



(Sources: Harasta, P. (2004): presentation EPPO workshop on ISPM No. 15, Sankt Petersburg)

## ISPM No. 15, Implementation in Germany - Control of treatment facilities, MB -

- /// **Sequence check:** at least once a year
- /// **Required concentration has to be measured and documented for each treatment**

Temperature	Dosage (g/m <sup>3</sup> )	Minimum concentration (g/m <sup>3</sup> ) after:			
		0,5 h	2 h	4 h	16 h
21 <sup>0</sup> C or more	48	36	24	17	14
16 <sup>0</sup> C or more	56	42	28	20	17
11 <sup>0</sup> C or more	64	48	32	22	19

- /// **Some EU-memberstates, e.g. Lithuania or Sweden do not allow MBr-fumigation for export!!!**

- MBr fumigated SWPM can be imported

## ISPM No. 15, Implementation in Germany - Control of treatment facilities -

- /// **Who is allowed to carry out treatment controls?**
  - Plant Protection Services
  - Organizations, Institutes, Companies authorised by the PPS
    - Technical Inspection Agency
    - Wood Technology Institutes
    - Private consultants
- /// **Documentation of the treatment**
  - Treatment protocols must be available for 3 years
  - Trace back must be possible
  - If treated but not marked wood or parts of SWPM are traded within Germany, treatment protocols must be enclosed

## ISPM No. 15, Implementation in Germany - Repair of SWPM -

### /// Treated and marked SWPM can be repaired with treated and marked material

- Two or more stamps from different companies can occur on one and the same packaging material

or

### /// Treated and marked SWPM is repaired with un-treated material

- Whole packaging must be retreated, old mark must be removed and a new mark must be attached

## ISPM No. 15, Implementation in Germany - Import of treated unmarked wood / SWPM -

### /// Import from EU-Memberstates

- If the treatment was done by a third company, treatment protocols must be supplied with the wood and kept by the packaging manufacturer.

### /// Import from third countries

- Treated but not marked wood should be accompanied by a treatment protocol and an official statement by the PPS that ISPM 15 is implemented in the exporting country.
- Requirements according to Directive 2000/29 are valid too.



## ISPM No. 15, Implementation in Germany Import control

- /// Phytosanitary requirements without control are of less function
- /// Randomising „high risk material list“ based on the relevant customs code (KN-code) e.g. Granite or iron cast parts



T. Schröder

Federal Biological Research Centre for Agriculture and Forestry  
Department für National and International Plant Health



## ISPM No. 15, Implementation in Germany - „Specialities“ -

- /// How to deal with SWPM stored for many years in climated rooms?



T. Schröder

Federal Biological Research Centre for Agriculture and Forestry  
Department für National and International Plant Health



## ISPM No. 15, Implementation in Germany - Specialities -

/// Do „arts and craft“ items come under ISPM 15?



## Implementation of ISPM No. 15 in the EU Summary

- /// **ISPM No. 15 is implemented in the EU**
  - Import requirements come into force on 1st of March
  - EU-countries are ready to fulfill ISPM 15 for export
- /// **Industry had no problems with implementation**
- /// **Harmonisation in EU and worldwide is necessary**
  - Repair of SWPM, bark-problem, MBr-treatment 16 or 24 h
- /// **Alternative treatments must be investigated!!!**
- /// **ISPM No. 15 should be used as promotion for the use of SWPM**

# Thank you for your attention!



© Fürstenberg

T. Schröder

Federal Biological Research Centre for Agriculture and Forestry  
Department für National and International Plant Health

