

"The World Best Plant Quarantine Service"

# Korean Plant Quarantine Information Exchange

**Jongmin Baik(jmbaik@korea.kr)**

**July 2011**

**Animal, Plant and Fisheries Quarantine and Inspection Agency**

# Contents

**I**

**Introduction**

**II**

**Administration Information System**

**III**

**Plant Quarantine Information System**

**IV**

**International Cooperation**

**IV**

**Contact Information**

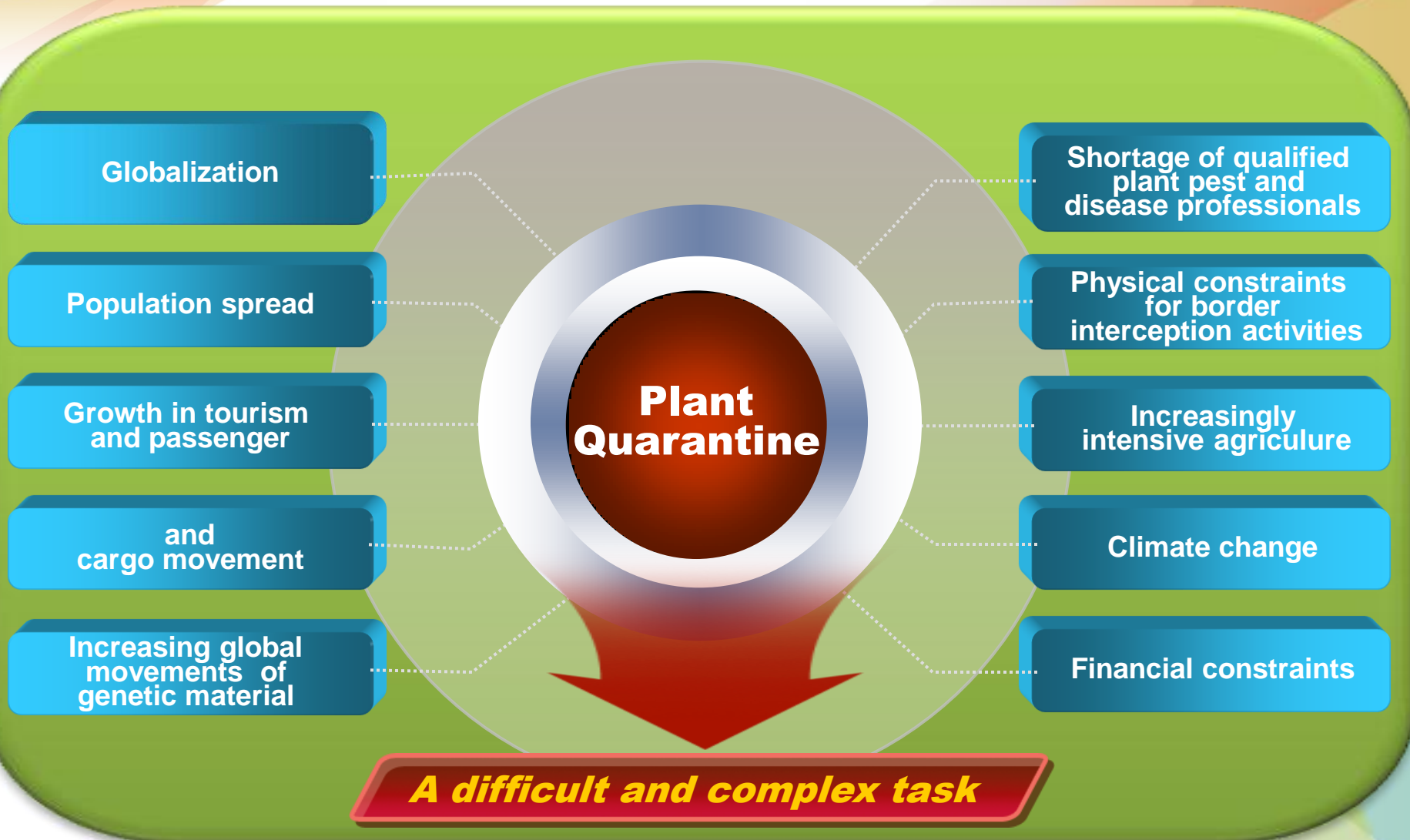


# I

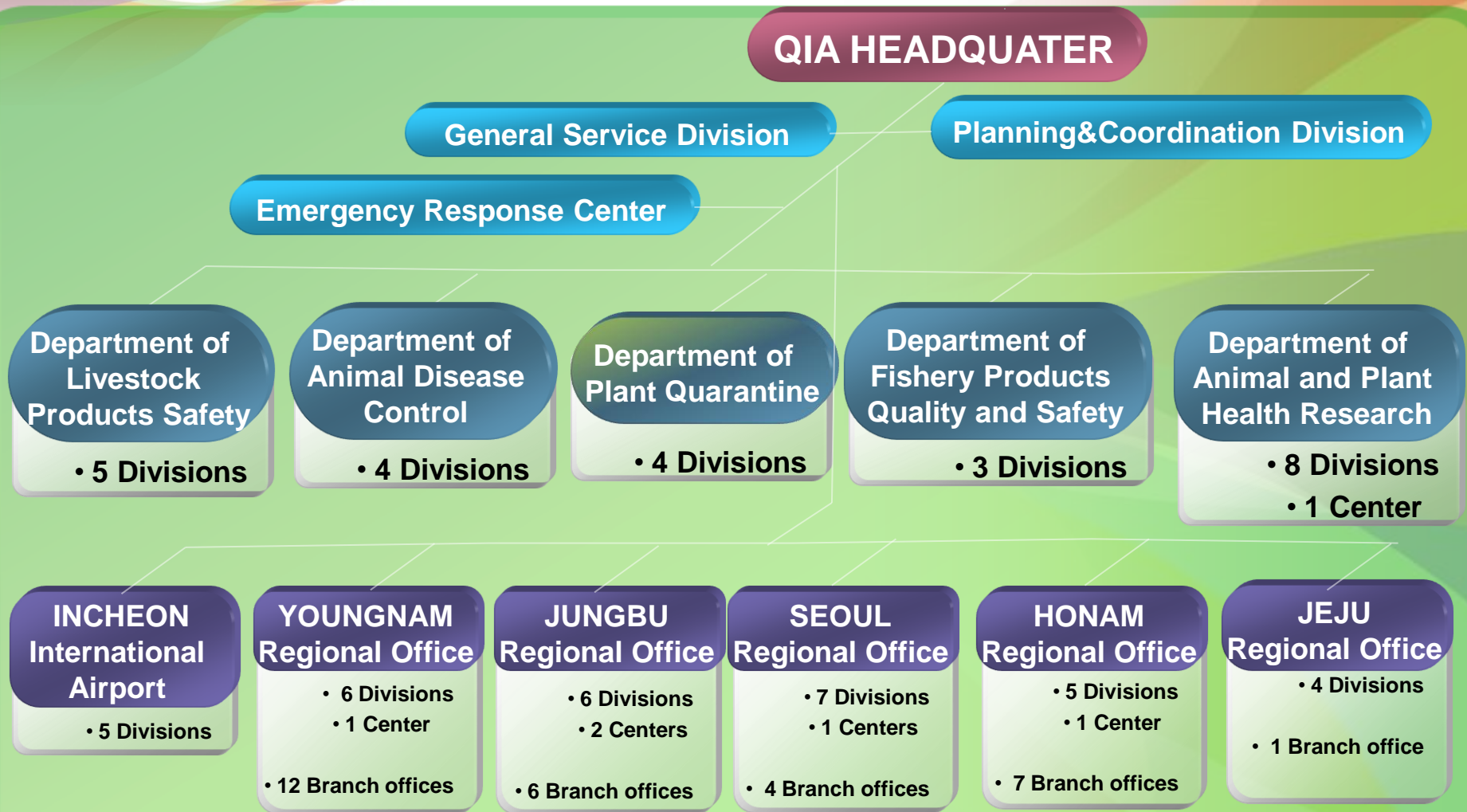
## **Introduction**

- 1. Organization**
- 2. Plant Quarantine**
- 3. Vision of QIA**
- 4. Pest Cartegorization**
- 5. Plant Quarantine Operation Overview**
- 6. Import Analysis Overview**

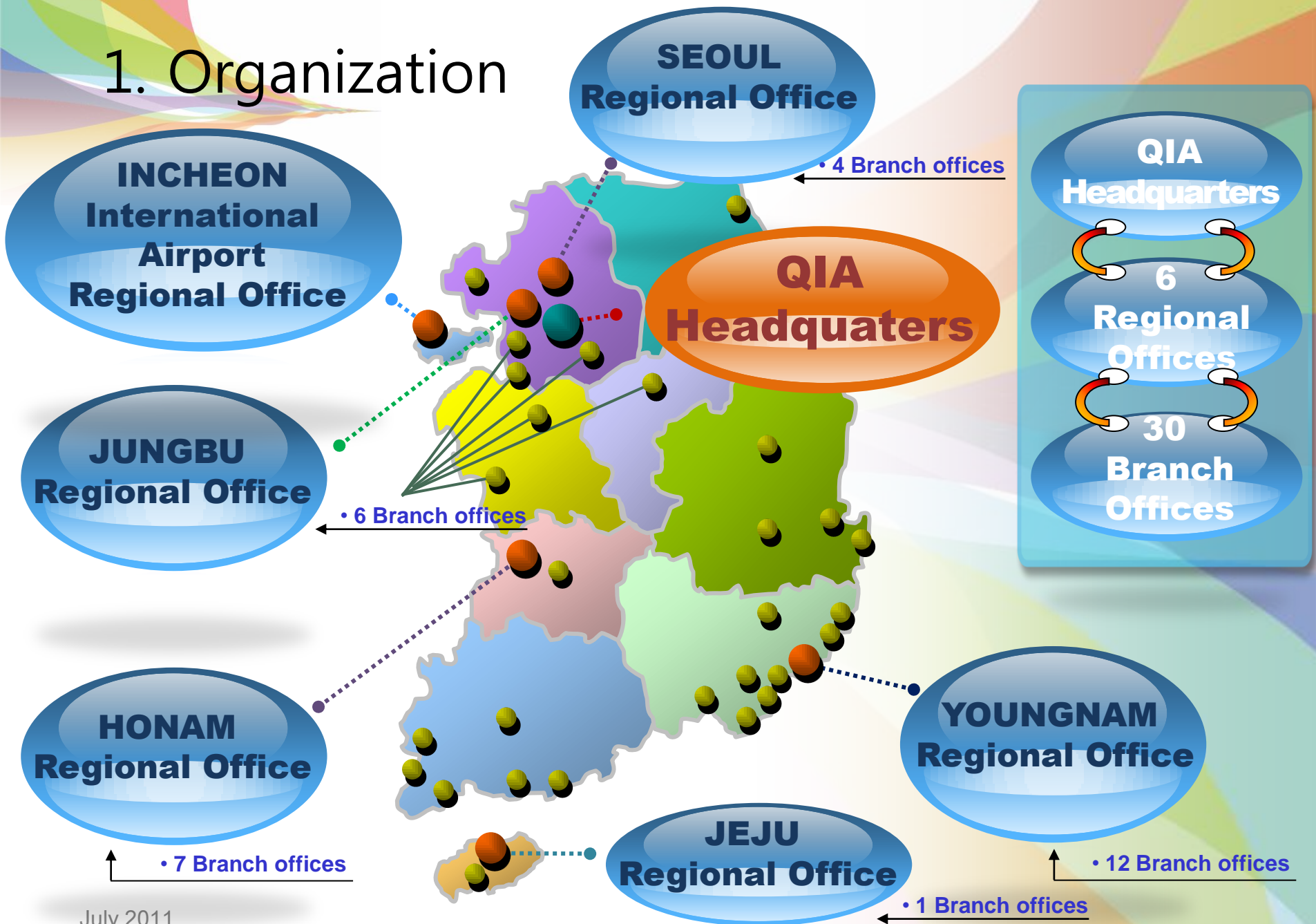
# Plant Quarantine, a difficult and complex task



# 1. Organization



# 1. Organization





# 3. Vision of QIA

**The World Best Plant Quarantine Service  
With Clients**

**Establishment  
of  
Client-centered  
Service**

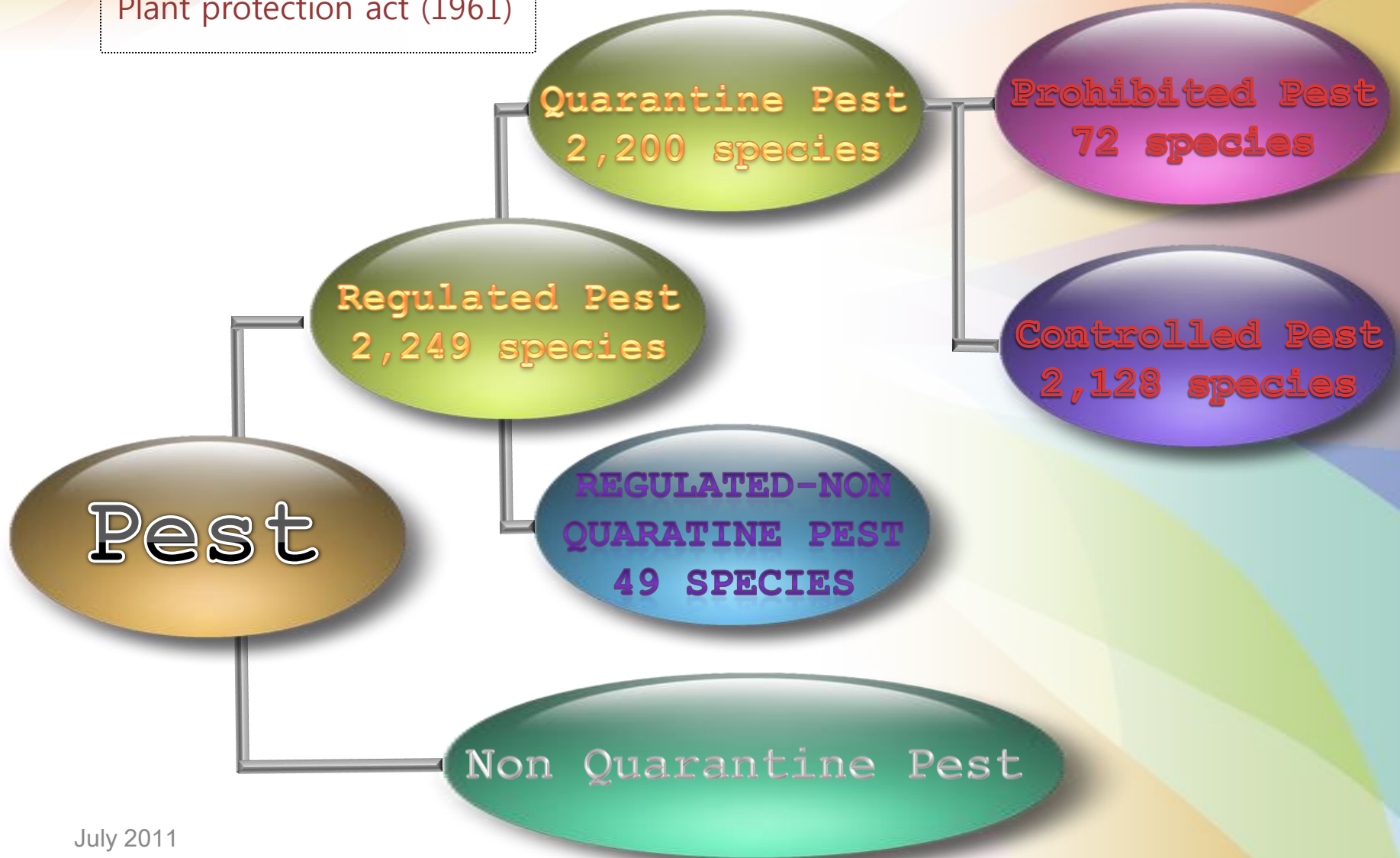
**Simplification  
of  
Work Process**

**Introduction  
of  
Advanced  
Technology**



# 4. Pest Cartagorization

Plant protection act (1961)



# 5. Plant Quarantine Operations Overview

- **Quarantine arrangements**

Offshore quarantine arrangements with 20 countries

Fresh fruits imported: 524,895 tons (2009), 672,058 (2010)

Orange	Chile, South Africa, Spain, Australia, Argentina
Table grape	Chile, Peru
Kiwi	Chile
Mango	Philippines, Thailand, Taiwan, Australia
Cherry	NZ, China, Uzbekistan, Australia



# 5. Plant Quarantine Operations Overview

- **Quarantine arrangements**

Recent Offshore quarantine arrangements

Dragon Fruit

Durian

Mangosteen

Papaya

Yellow Pitahaya

Vietnam

Malaysia

Thailand

Philippines

Columbia



## 6. Import Risk Analysis Overview

- **Market Access Request: from 35 Countries**

Malaysia	mango	( <i>Mangifera indica</i> )
Vietnam	mango	( <i>M. indica</i> )
Indonesia	mango	( <i>M. indica</i> )
Cambodia	mango	( <i>M. indica</i> )
Philippines	mangosteen	( <i>Garcinia mangostana</i> )
Thailand	pomelo	( <i>Citrus maxima</i> )
Taiwan	papaya	( <i>Carica papaya</i> )

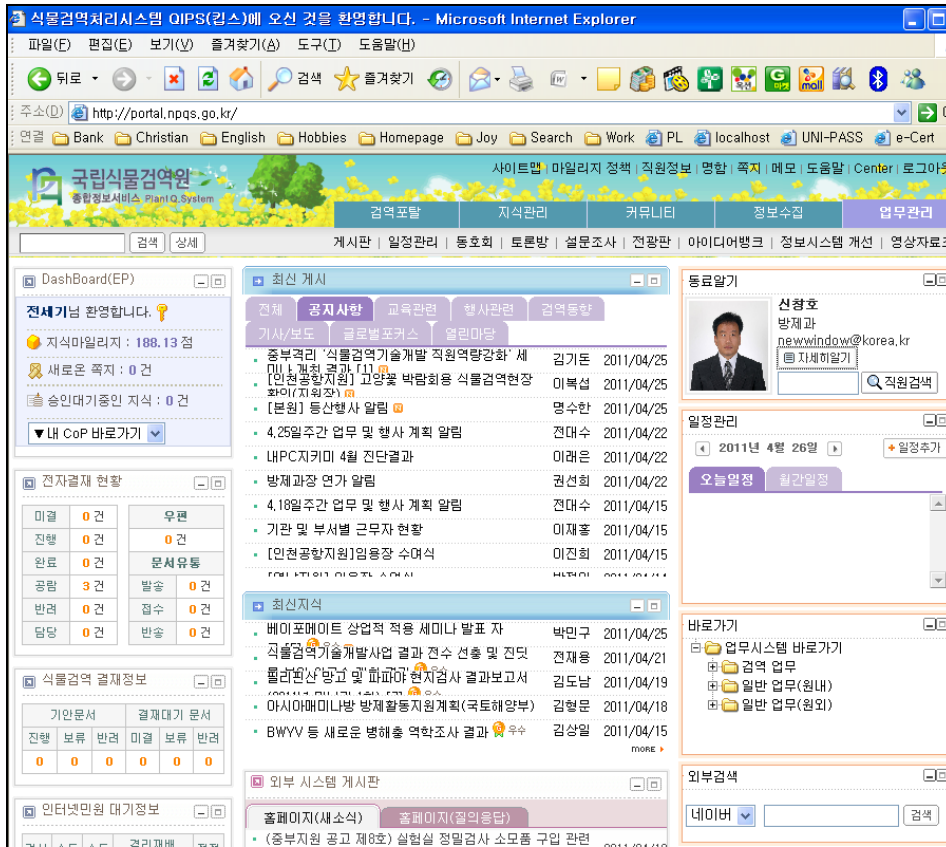


## **II Administration Information System**

- 1. Internal Portal System**
- 2. The official website of QIA**  
**(Homepage–Department of Plant Quarantine)**
- 3. Features of Information System**
- 4. List of Information System**

# 1. Internal Portal System

## Plant Q. System



Single log-in to the existing systems, It enables integrated management of Internal and external quarantine Information utilizing the Web Robot and provides demand-oriented Information.

- ✓ Integration of a log-in system
- ✓ Establishment of KMS(Knowledge Management System)
- ✓ A stronger data processing capacity of quarantine information
- ✓ Development : 2006

# Connected System

**Plant Quarantine Information System**

**E-cert System**

**Single Sign On (SSO)**

**Electronic Approval System for official documents**

**NPQS' Homepage**

## 2. The official website of QIA (Department of Plant Quarantine)

홈 | 구 국립수의과학검역원 | 구 국립식물검역원 | 구 국립수산물품질검사원

농림수산물검역검사본부 전자민원창구 업무마당 참여마당 **알림마당** 자료마당 기관소개

농림수산물검역검사본부는 대한민국의 건강하고 아름다운 미래를 열어가는 호석이 되었습니다.

국립수의과학검역원, 국립식물검역원, 국립수산물품질검사원이 **농림수산물검역검사본부로 통합되었습니다.**

빠른 시일내에 새로운 모습으로 찾아뵙겠습니다.

여름휴가 농어촌에서 시원하게 보내기  
빠른링크 QUICK LINKS

관련사이트 바로가기

자주 찾는 서비스 SERVICE

동축산물

- 축산관계자 출국신고 >
- 성분규격정책제안 >
- 수출애완동물검역예약신청 >
- 국가별 개고양이 검역절차 >
- 축산물영업자행정처분 >

뉴스 및 공지사항 | 농림수산물검역검사본부 관련소식 및 공지사항입니다

동축산물 | 식물 | 수산물

뉴스 | 공지사항 | 최근게시물 | 보도자료 | 입찰공고 | 해외정보 | **법령고시**

2011.06.29  
**농림수산물검역검사본부 서울검역검...**  
농림수산물검역검사본부 서울검역검사소 비정규직 채용 공고 1, 채용분야 및 인원, 근무지...

- 기획조정과 기간제근로자 모집
- 농림수산물검역검사본부 중부검역검사소 비정규...
- [중부검역검사소] 비정규직 채용공고
- 바이러스질병과 기간제 근로자 모집
- 전문(선임) 연구원 모집공고 (조류질병과)

동축산물 서비스 | 축산물검역 관련서비스 바로가기

팝업존  |  |  |  |



## 2. The official website of QIA (Department of Plant Quarantine)

[Http://www.npqqs.go.kr](http://www.npqqs.go.kr)

At Department of Plant Quarantine's homepage, clients included all connector through the internet who want to get Information, can check a state of inspectors' assignment about who will inspect the plant products.



**알림공간**

**일일 검역관 배정현황**

**Description of the NPPO  
Phytosanitary restrictions  
Requirements and prohibitions  
Official pest reports  
List of regulated pests  
Emergency actions**

번호	제목	담당자	첨부파일	등록일	조회수
		자	첨부파일	등록일	조회수
		양산사무소	<input checked="" type="checkbox"/>	2011/04/26	12
		광양사무소	<input checked="" type="checkbox"/>	2011/04/26	14
		인천공항지원	<input checked="" type="checkbox"/>	2011/04/26	10
		영남지원	<input checked="" type="checkbox"/>	2011/04/26	61
		사상사무소	<input checked="" type="checkbox"/>	2011/04/26	42
		신천대사무소	<input checked="" type="checkbox"/>	2011/04/26	33
		자성대사무소	<input checked="" type="checkbox"/>	2011/04/26	52
		중부지원	<input checked="" type="checkbox"/>	2011/04/26	193
		창원사무소	<input checked="" type="checkbox"/>	2011/04/26	51
		중부지원	<input checked="" type="checkbox"/>	2011/04/26	2014

# 3. Features of Information System

## ■ **Development of One-Stop Online Computer Processing Systems from inspection application to Customs clearance**

No need to visit the inspection office to submit the application and to receive the import certificate for import plant products to clear Customs

✓ Improve efficiency, reduce lead times and trim costs for clients

## ■ **Development of Electronic Phytosanitary Certification System**

Exchange of electronic phytosanitary certificates on the E-cert System

- Search of Phytosanitary Certificates on the E-cert website
- Exchange of Phytosanitary Certificates using SOAP method

✓ Reduce processing times and prevent forgery and fraud certificates

## ■ **Establishment Single Communications Network on the Web-based**

Connected all the agencies of QIA to Single Communication Network

✓ Keep the accurate data and improve the processing speed of business

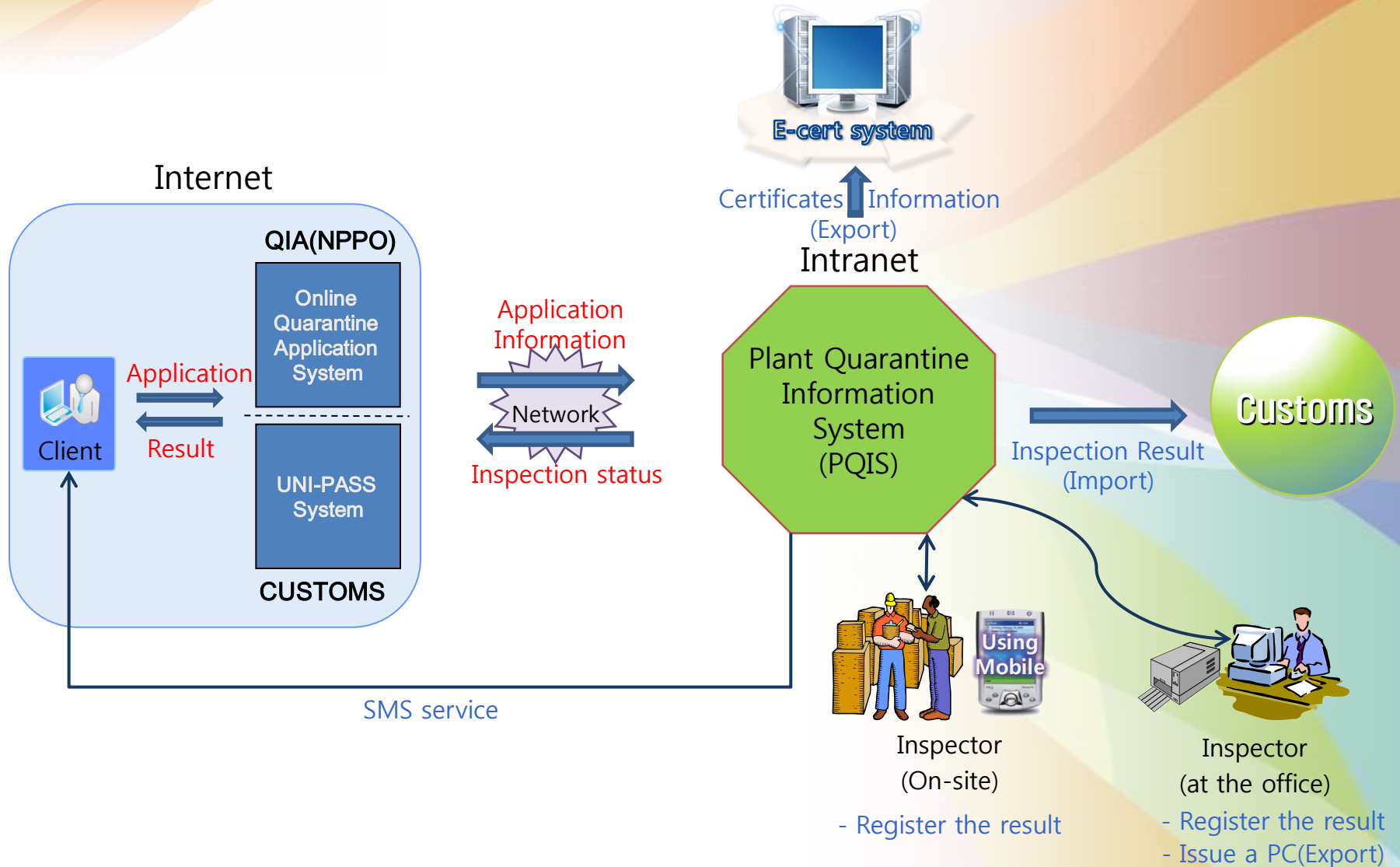
# 4. List of Information System

Category	Functional Classification	System Name
Quarantine & Inspection	Central System	Plant Quarantine Information System
	Application Service	Online Quarantine Application System
	Potable Devices	Real-time & on-site Process System using Mobile
	Electronic certificates exchange	Electronic Certification System(E-cert)
	Isolated cultivation management	Isolated Cultivation Management System
Quarantine Support	Business management	Pest Control Business Management System
	Business management	Heat Treatment Business Management System
	Pest management	Pest Monitoring Management System
	Tele-diagnosis	Pest Tele-diagnosis System
	Pest management	Pest Information System(PIS)
	Export complex management	Export Quarantine Supporting System
Administration Information	Internal Portal System	Plant Q. System
	Administration assistance	Electronic Approval System for official documents
	Administration assistance	Administration Assistance System
Public Service	Public relations	The official website of NPQS(Homepage)
	Send e-news	Policy Customer Relationship Management(PCRM)

## **III Plant Quarantine Information System**

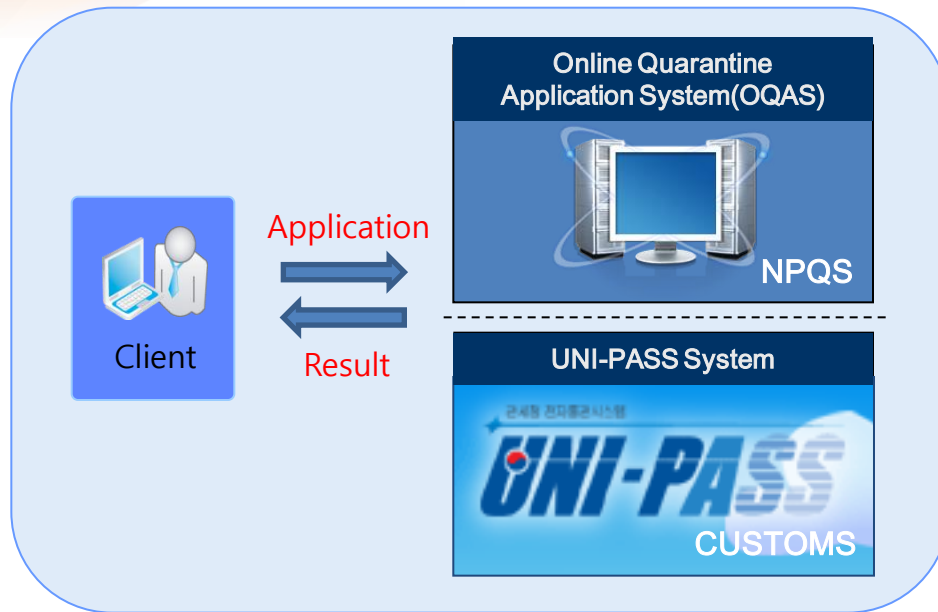
- 1. Information System Data Flow**
- 2. Online Quarantine Application System**
- 3. Real-time & on-site Process System**
- 4. Features of PQIS**
- 5. Using a E-cert System Data Flow**
- 6. Methods of E-cert**

# 1. Information System Data Flow

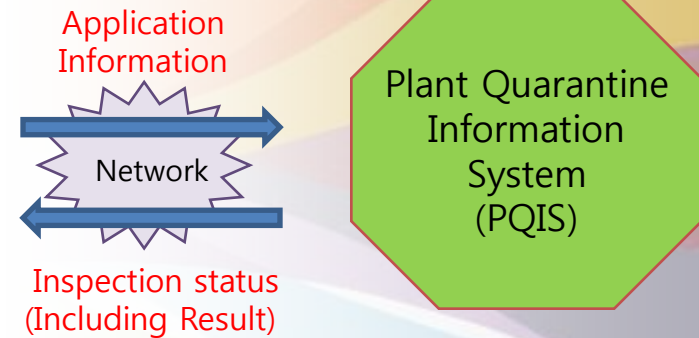


## 2. Online Quarantine Application System

Internet-based



Intranet



Enable clients to submit the inspection application and check the inspection status through the Online Quarantine Application System or UNI-PASS System.

- ✓ Clients have two options to submit the application via the internet.
  - OQAS made by NPQS or UNI-PASS System made by Customs
- ✓ They can check the inspection status by themselves on the websites.
  - Receive application, Disinfection, Inspection result(Approval, Destroyed, etc.)

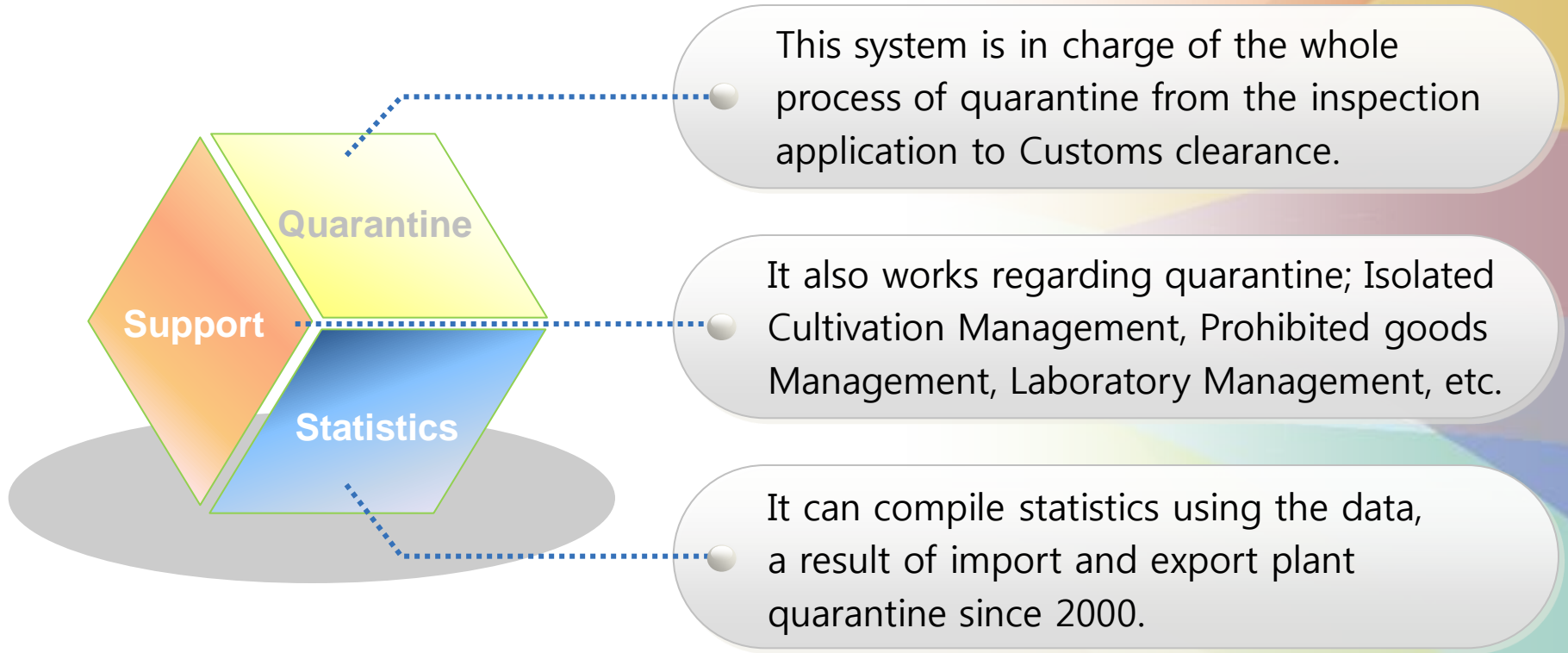
# 3. Real-time & on-site Process System



Inspectors are given authority for approval using a mobile phone at the site.

- ✓ Inspectors can approve the plant products and can send it the result to Customs with their mobile at the same time.
  - Clients can receive the result through the website or Short Message Service.
- ✓ It simplifies approval process and reduces processing time.
  - Clients don't need to receive the import certificate, a hard-copy, to clear.

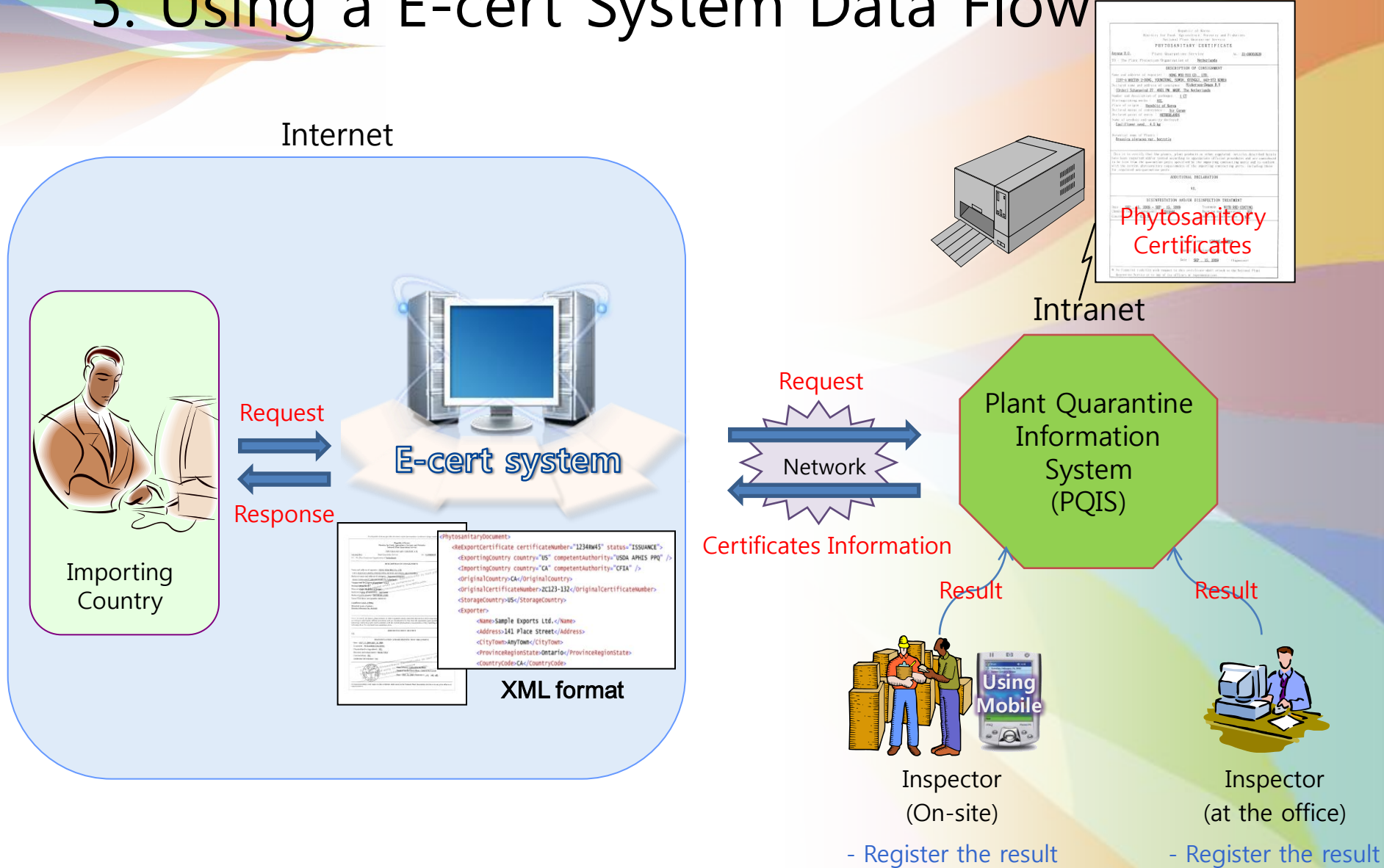
# 4. Features of PQIS



※ PQIS : Plant Quarantine Information System



# 5. Using a E-cert System Data Flow



# 6. Methods of E-cert

## Web View Access



<https://ecert.npq.s.go.kr>



Taiwan



Australia



New Zealand

Importing country  
NPPO

Enable Importing country's inspectors to inquire into the Phytosanitary Certificates that they want to view and verify on the Korean E-cert website.

- ✓ Need to internet access and logon/password to enter
- ✓ Export Certificates can be viewed, verified and downloaded in XML format
- ✓ Adoption : Taiwan, Official Pilot : Australia(November 2008 ~ May 2009)

※ This is not Electronic Phytosanitary Certification, only for reference.



## **IV International Cooperation**

- 1. Bilateral Meeting**
- 2. International Standards**
- 3. Capacity Building Programs**

# 1. Bilateral Meeting

QIA strives to resolve issues including market access and relaxation of quarantine regulations for Korea products in bilateral meeting

Regular bilateral meetings with countries such as

- ✓ US
- ✓ Japan
- ✓ Australia
- ✓ And Canada



## 2. International Standards

QIA actively participates in international standards setting procedures

- ✓ IPPC
- ✓ WTO/SPS
- ✓ APPPC and etc.



July 2011

# 3. Capacity Building Programs

QIA contributes to international capacity building programs to elevate national status and promote friendly ties

- ✓ ASEAN Plant Quarantine Expert Training Program IPPC
- ✓ FAO/IPPC Regional Workshop on ISPM drafts in Asia
- ✓ and etc.



V

## Contact Information

### **Mr Jongmin Baik**

Assistant Director  
Plant Quarantine 1st Division  
Jungbu Regional Office  
[jmbaik@korea.kr](mailto:jmbaik@korea.kr)

### **Ms kyook Yim**

Deputy Director - International Convention  
Export management Division  
Department of Plant Quarantine  
[kyyim@korea.kr](mailto:kyyim@korea.kr)

### **Mr Youngchul Jeong**

Deputy Director – International Cooperation  
Export management Division  
Department of Plant Quarantine  
[ycjeong9@korea.kr](mailto:ycjeong9@korea.kr)

A pair of weathered, brown hands is shown from a top-down perspective, gently cupping a small, vibrant green seedling. The seedling has four leaves and is growing out of a mound of dark, rich soil. The background is a dark, textured surface, possibly more soil or a dark fabric, which makes the hands and the plant stand out. The overall mood is one of care, protection, and nurturing.

**COMMUNICATE!!**

**Protect and Preserve**

**Agriculture**

**&**

**Natural Environment**





Thank You

July 2011

A 3D graphic featuring the letters 'Q', '&', and 'A' in a stylized font. The 'Q' is blue, the '&' is black, and the 'A' is green. They are positioned on a grey, rounded rectangular base that resembles a speech bubble. The background is white with colorful, abstract, flowing shapes in shades of blue, green, yellow, and orange. The letters and base have a slight shadow on the white surface below them.

# Q&A

July 2011