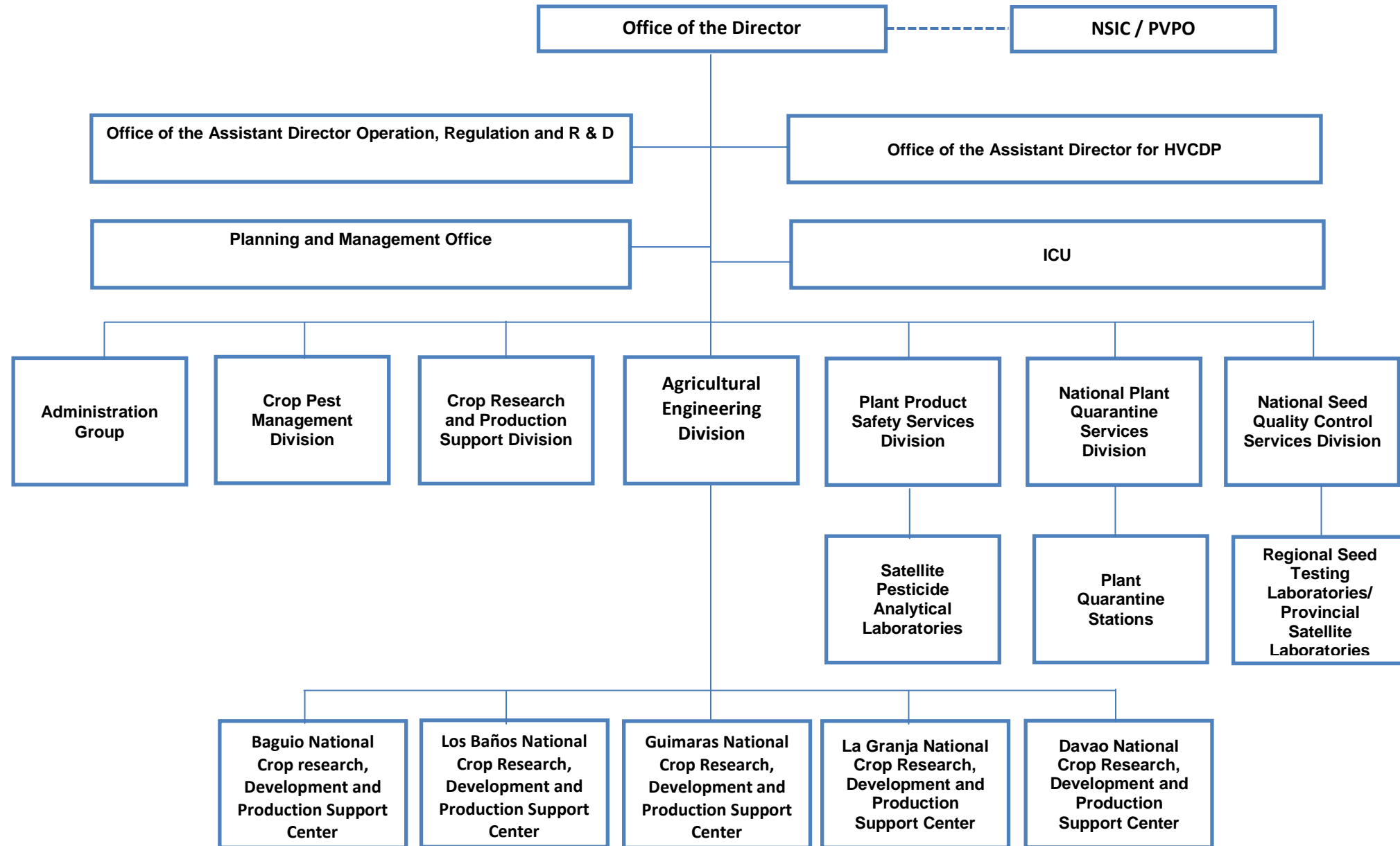


# BUREAU OF PLANT INDUSTRY (BPI)

## Organizational Structure



## **CROP PEST MANAGEMENT DIVISION FUNCTION**

Sections

### **BIO-CONTROL AND INTEGRATED PEST MANAGEMENT (IPM)**

Section to (a) mass produce, maintain screen, distribute and assess the effectiveness of bio-control agents, (b) Provide direction in the establishment of sustainable bio-control agent's production system in communities, (c) undertake field verification of IPM activities, and (d) conduct assessment of RPCP's and the network of bio-control laboratories, and

### **PLANT HEALTH AND PEST STATUS SECTION**

To (a) Provide national plant health status, (b) develop and maintain a repository of pest data, specimen-based pest list and other crop protection information, and (c) determine the report the status of pest incidence and resistance (i.e. Invasive outbreak or epidemic).

### **PEST FORECASTING SECTIONS**

To (a) conduct pest monitoring, (b) analyzed pest incidence reports and issue pest and advisory, (c) conduct post-border pest surveillance, and (d) undertake ecological pest's assessment;

## NATIONAL PLANT QUARANTINE SERVICES DIVISION FUNCTION

The Elevation of the PQS into a division and its remaining into a National Plant Quarantine Services Division (NPQSD) instead the propose PQSD, is allowed in view of the centralized of the control supervision and administration of plant quarantine activities and services at the national and regional borders <sup>26</sup>, as discussed earlier, and to be comparable with the nomenclature of its emerging counterpart division in the BAI that would handle animal Quarantine activities and services.

In view thereof, the transfer of the supervision of all plant quarantine stations and positions herein from the DA RFO's to the BPI will be effected. However, following the set-up in the Bureau of Quarantine (BOQ) under the approved department of health (DOH) RP, positions in said stations would be straight listed under a new organization unit to be name as Plant Quarantine Stations (PQS) flexibility in the deployment of personnel. The PQS would be place directly under the emerging NPQSD to have easier coordination of plant health services and quarantine strategies, especially in times of epidemic threats and emergencies.

### Sections

#### ACCREDITATION AND LICENSING SECTION

To (a) accredit importers and exporters of plant and plant products / by products, and (b) issue clearances and other permit related to international trade of plant and plant products / by products; and

#### QUARANTINE POLICY AND COORDINATION SECTION

To (a) conduct import risk analysis, (b) formulate and review policies on plant quarantine matters, in accordance with international agreement's on plant quarantine protocols, and sanitary and phytosanitary (SPS) measures, and (c) coordinate the activities of the various plant quarantine stations.

## **CROP RESEARCH AND PRODUCTION SUPPORT DIVISION FUNCTION**

The consolidation of the CPdD and the RD into a Crop Research and production support division (CRPSD), instead of the proposed renaming into an SSMD and CRPGRMD, respectively, is considered to provide holistic unit that would efficiently integrated the crop research –related and crop production support-related function of the Bureau.

### Sections

#### **CROP CULTURE AND MANAGEMENT SECTION**

To (a) plan, orchestrate, facilitate and monitor the R&D programs and activities of the bureau concerning crop culture and management (i.e. generating and developing appropriate technologies on plant nutrition physiology and IPM for field and horticulture crops), (b) established and strengthen linkages with other R&D institutions and (c) provide technical advisory services to BPI CENTERS and stakeholders on crop culture and management;

#### **CROP PRODUCT SUPPORT SECTION**

To (a) plan, orchestrate, facilitate and monitor the R&D programs and activities on production and distribution of high quality seeds and/or plant materials of NSIC-registered. Crop cultivars and other high-yielding varieties, (b) accredit private plant nurseries and other plant breeding institutions, and (c) Monitor the seed and plant materials production and distribution performance of BPI Center's, DA RFU's seed farms and accredited private institutions.

#### **CROP IMPROVEMENT AND PLANT GENETIC RESOURCES (PGR) MANAGEMENT SECTION**

To (a) plan, orchestrate, facilitate and monitor the R&D programs and activities of the bureau concerning crop culture and management (i.e. , developing crop varieties and cultivars with desirable agronomical and horticultural characteristics) and Philippine PGR's biodiversity conversation and documentation, characterization, and evaluation), (b) established and strengthen linkages with other R&D institutions and (c) provide technical advisory services to BPI CENTERS and stakeholders on crop improvement and PGR management; and

## **AGRICULTURAL ENGINEERING DIVISION FUNCTION**

The retention of the AED is in order to provide designs and technical support on farm mechanization, develop efficient and affordable protective and treatment structures for fruits and vegetable, and studies the usage of alternative energy sources to power farm activities.

### Sections

#### **AGRICULTURAL INFRASTRUCTURE DEVELOPMENT SECTION**

To (a) design and develop protective and treatment structures for fruits and vegetables, and (b) enhance the technical capability BPI and DA regional centers in the development of location-specific protective and treatment structures; and

#### **FARM POWER AND EQUIPMENT DEVELOPMENT SECTION**

To design and develop alternative farm power source such as windmills, sterling engines, gasifiers and solar energy project development service is provided. However, said division would act as a "clearing house" for all agri-fishery infrastructure project proposals to ensure that the planning, contraction and delivery of agri-fishery infrastructure is consistent with the technical and financial requirements adapted by the DA

# PLANT PRODUCT SAFETY SERVICES DIVISION (PPSSD) FUNCTION

The renaming of the LSD into a PPSSD is considered to refocus and emphasized its role in ensuring plant products safety through the formulation of food safety protocols for fresh and minimally processed agriculture produce, and monitoring of compliance with food safety schemes, as supported by its laboratory activities.

## Sections

### ACCREDITATION AND INSPECTION SECTION

To (a) formulate and accredit food safety protocols, and (b) inspect and monitor compliance with food safety schemes;

### CONTAMINANTS LABORATORY SECTION

To (a) monitor chemical and microbiological contaminants and biotoxins, and (b) provide physico-chemical and microbiological analytic services in fresh and minimally processed produce; and

### PESTICIDE ANALYTIC LABORATORY SECTION

(covers regions III, IV-A, IV-B, V and NCR) to (a) monitor pesticide residue level in locally produce and imported agriculture commodities, and (b) provide pesticide analytical services to stakeholders.

## Satellite Pesticide Analytical Laboratory

### SPAL – BAGUIO CITY

Covers regions I, II and CAR

- Determine pesticide residues in agriculture products in order to protect local and international consumers from possible health hazards;
- Check on possible indiscriminate use and applications of pesticides on food crops and other agricultural products;
- Determine pesticides degradation rates for different crops to be able established “waiting times” and prepare recommendations to improved/change agriculture practices; and
- Determine and evaluate practices on the use of pesticides for possible modification in acceptable law residues in agriculture products.

### SPAL – CEBU CITY

Covers regions VI, VII and VIII

- Determine pesticide residues in agriculture products in order to protect local and international consumers from possible health hazards;
- Check on possible indiscriminate use and applications of pesticides on food crops and other agricultural products;
- Determine pesticides degradation rates for different crops to be able established “waiting times” and prepare recommendations to improved/change agriculture practices; and
- Determine and evaluate practices on the use of pesticides for possible modification in acceptable law residues in agriculture products.

### SPAL – CAGYAN DE ORO CITY

Covers regions IX, X and XIII

- Determine pesticide residues in agriculture products in order to protect local and international consumers from possible health hazards;
- Check on possible indiscriminate use and applications of pesticides on food crops and other agricultural products;
- Determine pesticides degradation rates for different crops to be able established “waiting times” and prepare recommendations to improved/change agriculture practices; and
- Determine and evaluate practices on the use of pesticides for possible modification in acceptable law residues in agriculture products.

### SPAL – DAVAO CITY

Covers regions XI and XII

- Determine pesticide residues in agriculture products in order to protect local and international consumers from possible health hazards;
- Check on possible indiscriminate use and applications of pesticides on food crops and other agricultural products;
- Determine pesticides degradation rates for different crops to be able established “waiting times” and prepare recommendations to improved/change agriculture practices; and
- Determine and evaluate practices on the use of pesticides for possible modification in acceptable law residues in agriculture products.

**NATIONAL CROP RESEARCH, DEVELOPMENT  
AND PRODUCTION SUPPORT CENTERS  
FUNCTION**

The NCRDPSC would focus on R&D, seed system management (i.e., production and distribution of quality seeds and planting materials), and PGR conservation and development activities concerning semi-temperate crops (Baguio NCRDPSC), lowland field/crops (Los Baños NCRDPSC), upland crops and legumes (La Granja NCRDPSC), and Mangoes (Davao NCRDPSC). Moreover, it would promote to technologies developed by centers through techno-demo and distribution of IEC materials.

Centers

**BAGUIO  
NCRDPSC**

**LOS BAÑOS  
NCRDPSC**

**LA GRANJA  
NCRDPSC**

**DAVAO  
NCRDPSC**

**GUIMARAS NATIONAL  
MANGO RESEARCH AND  
DEVELOPMENT CENTER  
NCRDPSC**

## NATIONAL SEED QUALITY CONTROL SERVICES DIVISION FUNCTION

- Formulate plans and programs on seed quality control services and activities on seed testing, seed/material certification and other quality control schemes to be developed;
- Conduct seed analysis, and issue the corresponding report of analysis of samples drawn from locally produce and imported seeds;
- Conduct field inspections of seed crops, seed storage and processing facilities and other activities required for seed/plant materials certification, and issue the corresponding report of inspection.
- Conduct seed research and seed technologies training for its clientele;
- Issue permits and license to private seed and/or plant materials growers.
- Supervised and coordinate all official seed testing laboratories in the regions and provincial satellite laboratories, and seed certification in all provinces, and
- Accredite private seed testing laboratories.

### Sections

SEED TESTING SECTION

SEED CERTIFICATION  
SECTION

SEED MATERIALS  
CERTIFICATION SECTION

## REGIONAL SEED TESTING LABORATORIES/PROVINCIAL SATELLITE LABORATORIES FUNCTION

- Conduct seed testing activities on purity, germination, moisture, varietal determination, seed health, vigor test and other seed quality attribute;
- Conduct seed certification activities which include preliminary and final field inspection, and seed analysis for varietal and physical purity, germination and moisture; and
- Conduct plant material certification activities which include preliminary and final field inspection, nursery inspection, validation, evaluation, revalidation, and morphological and DNA characterization.

NSQCS REGION I  
STA. BARBARA,  
PANGASINAN

NSQCS CAR  
BAGUIO CITY

NSQCS REGION II  
SAN MATEO  
ISABELA

NSQCS REGION III  
MUÑOS  
NUEVA ECIJA

NSQCS REGION IV-A  
MUÑOS  
LOS BAÑOS,

NSQCS IV-B  
NAUJAN, ORIENTAL  
MINDORO

NSQCS REGION V  
PILI, CAMARINES  
SUR

NSQCS REGION VI  
ILO-ILO CITY

NSQCS REGION VII  
MIDSAYAP,  
NORTH COTABATO

NSQCS REGION VII  
UBAY, BOHOL

NSQCS REGION VIII  
BABATNGON,  
LEYTE

NSQCS REGION IX  
IPII, ZAMBOANGA  
SIBUGAY

NSQCS REGION X  
CAGAYAN DE ORO  
CITY

NSQCS REGION XI  
DAVAO CITY

NSQCS CARAGA  
BUTUAN CITY