

NPPO OF MALAYSIA

Director

Plant Biosecurity Division

Department of Agriculture Malaysia
Wisma Tani, Jalan Sultan Salahuddin
50632 Kuala Lumpur, Malaysia

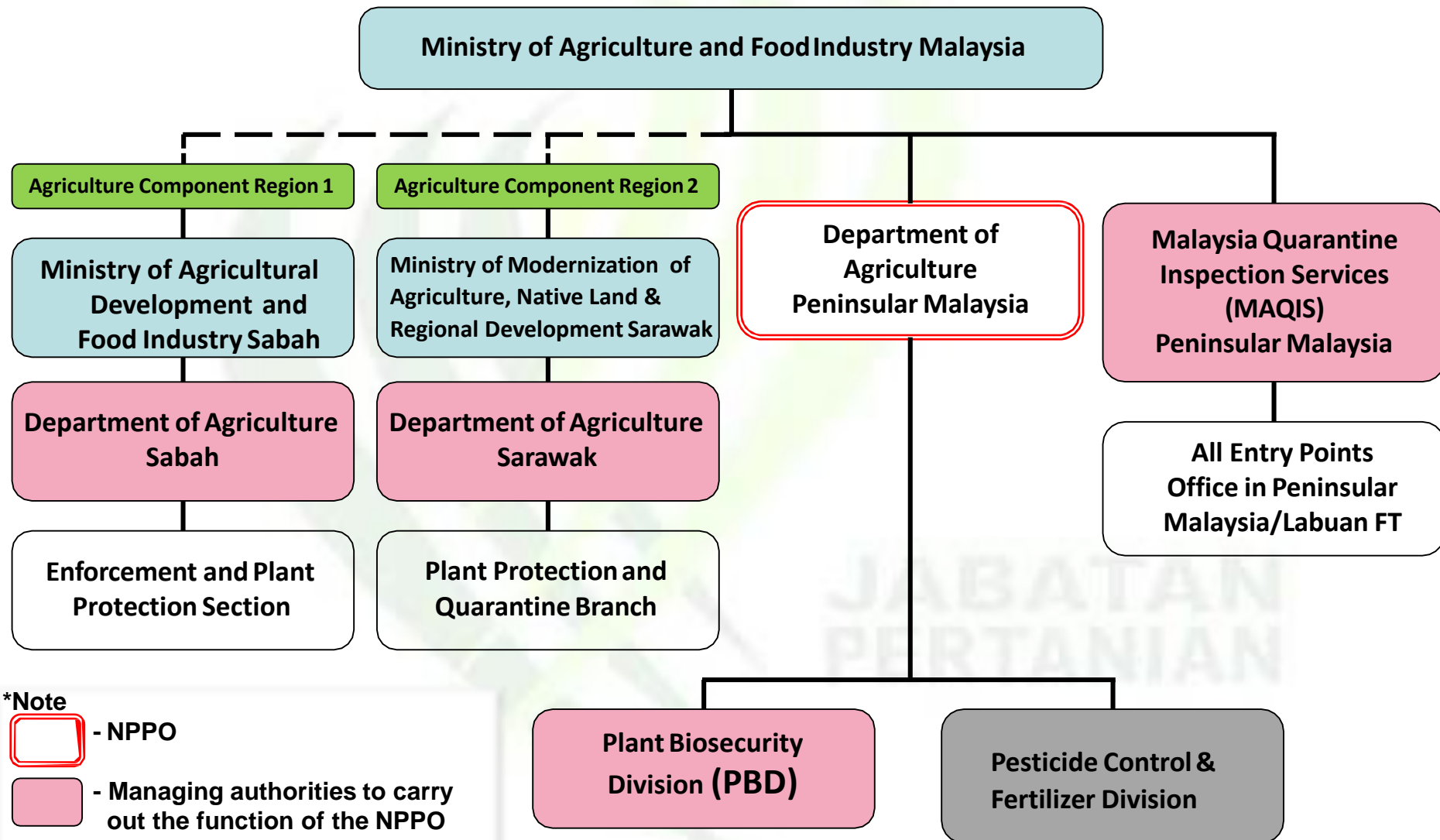
Tel: +6-03-2030 1420

Fax: +6-03-2691 3530

E-mail : arizal@doa.gov.my;
mycontactpoint@doa.gov.my

Website : <http://www.doa.gov.my>

NPPO OF MALAYSIA ORGANIZATION CHART



*Note



- NPPO



- Managing authorities to carry out the function of the NPPO



- Pesticide Registration/PIC DNA

Status as of 19/4/2020

FUNCTIONS AND RESPONSIBILITIES OF NPPO AND AGENCIES THAT CONDUCT THE NPPO DUTIES

The **managing authorities** for import inspection at entry points and issuance of import permits for plants, plant products and regulated articles:

- (i) Import inspection for Peninsular Malaysia and Labuan Federal Territory (FT) by **MAQIS**;
- (ii) Issuance of import permit for Peninsular Malaysia and Labuan FT by **MAQIS**;
- (iii) Import inspection and issuance of import permit for Sabah and Sarawak by **DOA Sabah and DOA Sarawak**, respectively.

FUNCTIONS AND RESPONSIBILITIES OF NPPO AND AGENCIES THAT CONDUCT THE NPPO DUTIES

The **managing authorities** for export inspection and issuance of phytosanitary certificates for plants, plant products and regulated articles:

- (i) Issuance of phytosanitary certificate for Peninsular Malaysia and Labuan FT by **PBD, DOA**;
- (ii) Issuance of phytosanitary certificate for Sabah and Sarawak by **DOA Sabah and DOA Sarawak**, respectively.

JABATAN
PERTANIAN