



Food and Agriculture  
Organization of the  
United Nations



International  
Plant Protection  
Convention



Department  
for Environment  
Food & Rural Affairs

# Emerging Pathways

**Importance of Industry Engagement:**

**North American Sea Container Initiative Experience**

---

London, 21 – 23 September 2022

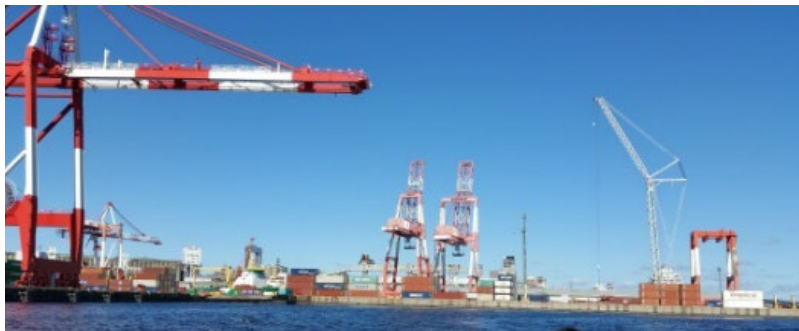
**International Plant Health Conference**



# Pathways



# Sea Containers and Cargo Pathway



## What is the problem? Contamination



# Cargo

## Plants and plant products



## Not plants or plant products

- E.g. pipes, tile, vehicles, steel slabs, fasteners, glass, furniture, car parts, stone)





# Sea Containers and Cargo Contamination

## Examples of pests or contaminants found include

**molluscs:** snails and slugs

**insects:** egg masses (e.g. *Lymantria* spp.), khapra beetle, weevils, leafhoppers, pupal cases

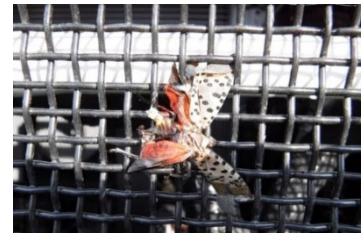
**seeds:** weeds, crops

**plant debris:** harbour pests

**pathogens:** e.g. fungi

**soil:** soil-borne pathogens, nematodes, weed seeds, eggs

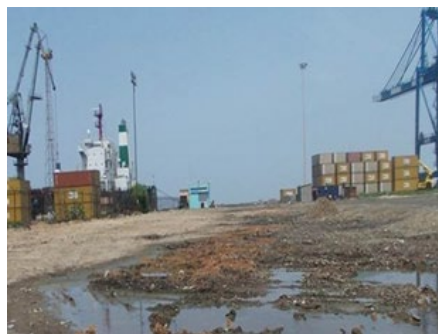
**other:** straw, spiders, earthworms, bird nests, bird droppings



# Sea Containers and Cargo Contamination

Contamination can occur for many reasons such as

- origin, season, pest biology
- conditions at packing, staging, storage or handling areas (e.g. soil-based yard, pest hosts, vegetation)
- lights that attract insects (e.g. moths)
- environmental factors (e.g. wind, rain)
- packaging (e.g. non-compliant wood), transient pests, previous cargo
- container type and maintenance



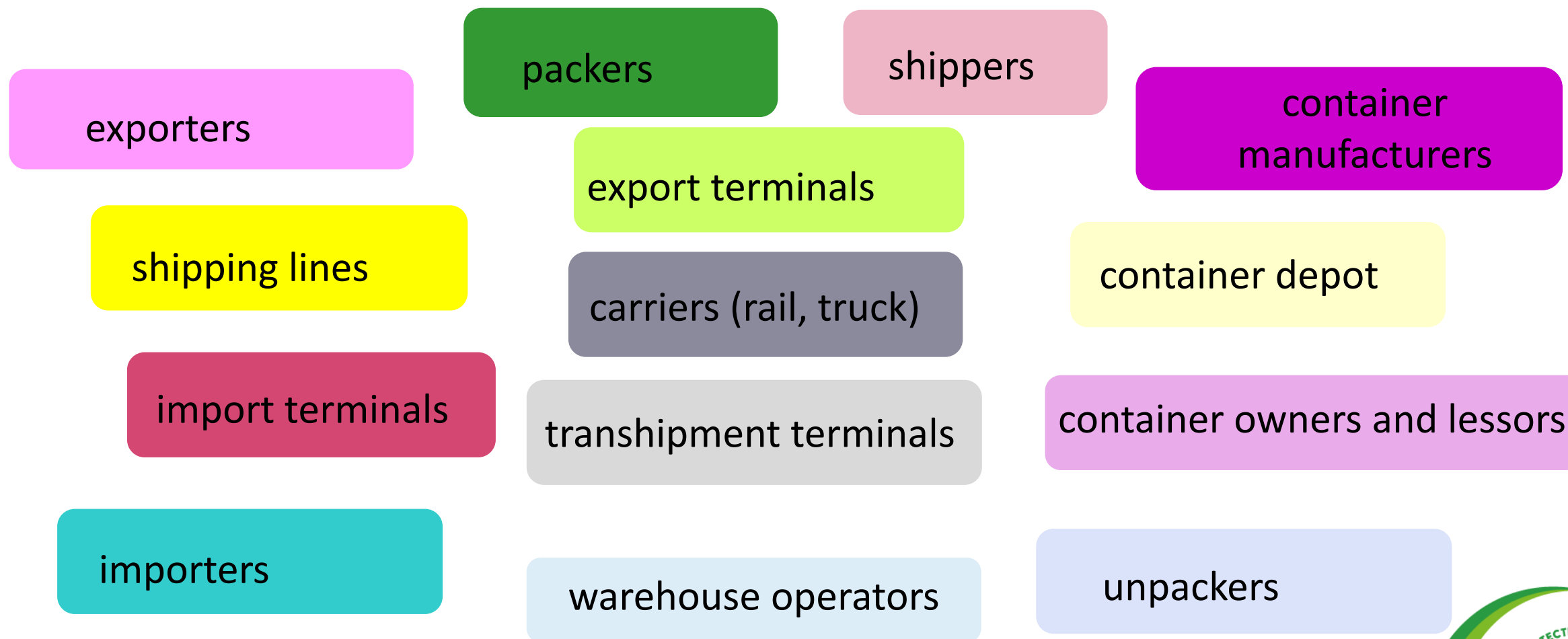




# Voluntary Canada-United States-Mexico government-industry initiative



# Industry = parties involved in the supply chain in North America and beyond



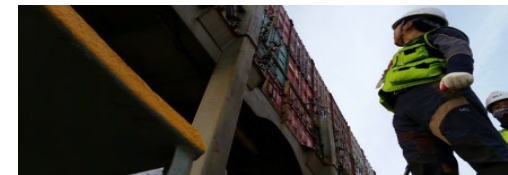
Based on IPPC infographic <http://www.fao.org/documents/card/en/c/ca7670en>



# North American Sea Container Initiative

## Objectives for engaging industry include

- Understanding **logistics of container movement**
- Understanding challenges and opportunities for **identifying** and **reducing** pest risks in the sea container supply chain
- Conducting **outreach and education**



<https://nappo.org/english/north-american-sea-container-initiative>



# North American Sea Container Initiative

## What We Are Doing

### Webinars and meetings with industry to learn about

- Existing practices
- Phytosanitary risks in/on containers/cargo
- Issues encountered or anticipated regarding phytosanitary checks and cleaning
- Suggested measures to take or influence to mitigate plant health risks depending on role



# North American Sea Container Initiative

## What we have learned

- Complex systems
- Industry active and willing to contribute to solution
- Who does or can do what
- Outcomes based solution
- Consider suite of measures

## Using what we have learned

- Consider all points along supply chain
- Determine what actions are practical, feasible and effective



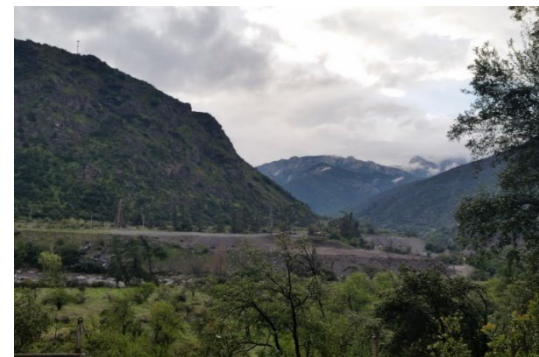


# What will this mean?

**Maintain, develop, enhance and enforce programs and requirements that are**

- Practical
- Sustainable
- Effective and economical
- Based on best information available at the time
- Continually reviewed and adjusted as appropriate

**Working together** = minimize risk to agriculture, forestry and natural plant resources while maintaining trade, where feasible





Food and Agriculture  
Organization of the  
United Nations



International  
Plant Protection  
Convention



Department  
for Environment  
Food & Rural Affairs

# Thank You.

## Questions, Comments, Discussion?

**Wendy Asbil**

*National Manager, Invasive Alien Species and  
Domestic Programs, Plant Protection Division,  
Canadian Food Inspection Agency*

London, 21 – 23  
September 2022

## International Plant Health Conference

