



INTERNATIONAL PLANT HEALTH CONFERENCE

LONDON, 21-23 September 2022

European Reference Laboratories in Plant Health: a regional network



*Françoise MUNAUT, Policy officer,
DG Health and Food Safety
(Unit Plant Health)*

FROM & FOR

Legal basis :

the Official Control Regulation

EU 2017/625



Networking : EURLs & NRLs & OLs

WHY

Official controls and activities

rely (e.g.) on

uniformity

quality

of test methods and
of results

reliability

h
a
r
m
o
n
i
s
a
t
i
o
n

August 2019

Bacteria
Fungi and Oomycetes
Insects and Mites
Nematodes,
Virus, Viroids & Phytoplasmas



5 European Reference Laboratories in plant health

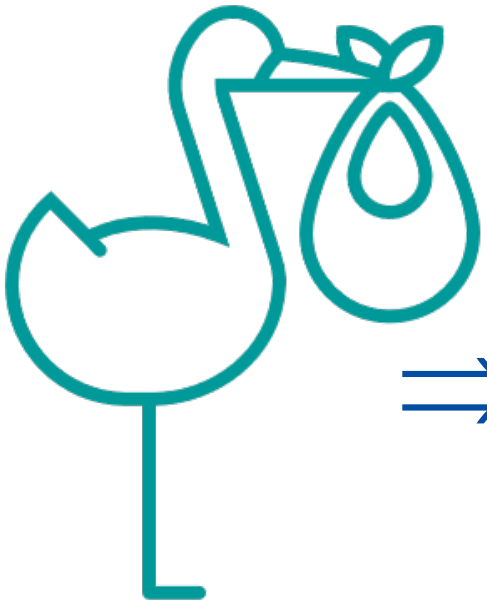
WHEN

⇒ **end 2017**: greenlight to set up Plant Health EURLs

⇒ 7 February 2018 : Commission Delegated Regulation (EU) 2018/631

⇒ June and October 2018 : 2 calls

⇒ 27 March 2019 : Commission Implementing Regulation 2019/530



⇒ **1st August 2019** : start of work

WHO

1. BACTERIA consortium

- Led by the Netherlands Food and Consumer Product Safety Authority-National Reference Centre Plant Health (NIVIP/NVWA, **The Netherlands**)
- Flanders Research Institute for Agriculture, Fisheries and Food (ILVO, **Belgium**)
- Research Centre for Plant Protection and Certification (CREA-DC (DIALAB), **Italy**)
- National Institute of Biology (NIB, **Slovenia**)

2. FUNGI

- French Agency for Food, Environmental and Occupational Health and Safety (ANSES, **France**)

3. INSECTS AND MITES consortium

- Led by the French Agency for Food, Environmental and Occupational Health and Safety (ANSES, **France**)
- Austrian Agency for Health and Food Safety (AGES, **Austria**)

4. NEMATODES consortium

- Led by the French Agency for Food, Environmental and Occupational Health and Safety (ANSES, **France**)
- Flanders Research Institute for Agriculture, Fisheries and Food (ILVO, **Belgium**)

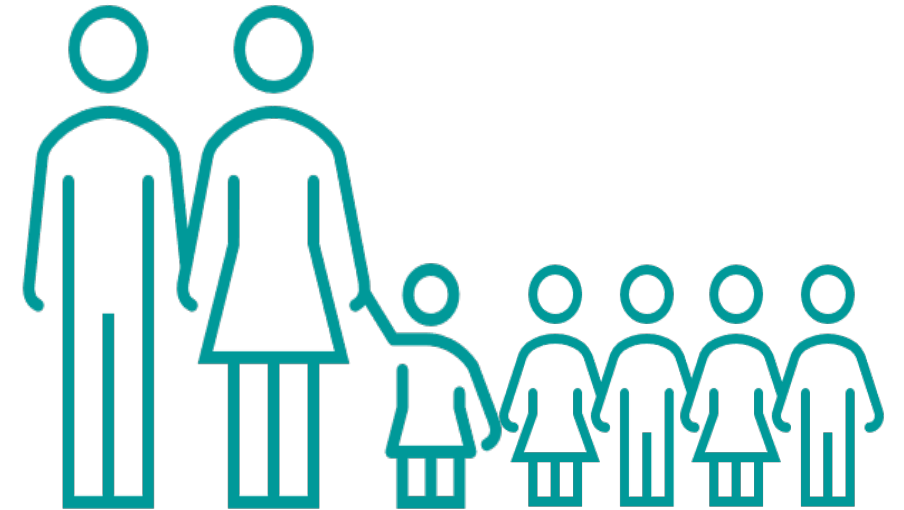
5. VIRUS, VIROIDES and PHYTOPLASMAS consortium

- Led by the Netherlands Food and Consumer Product Safety Authority-National Reference Centre Plant Health (NIVIP/NVWA, **The Netherlands**)
- Research Centre for Plant Protection and Certification (CREA-DC (DIALAB), **Italy**)
- National Institute of Biology (NIB, **Slovenia**).

WITH

45 EURLs

- 26 in Food & Feed
- 14 in Animal Health
- 5 in Plant Health



WHAT

1. Methods for analysis, testing or diagnosis
2. Test Performance & Proficiency tests &
3. Reference material and reagent lists, for NRLs
4. Trainings
5. Advices on methods, e.g. for new EU legislations related to movements and introductions in EU territory

ON

- **Union quarantine pests** pursuant to Art. 5 of Regulation (EU) 2016/2031;
- **Plant pests not yet listed as Union quarantine pests, but are subject to the measures to be adopted pursuant to Art. 30(1) of Regulation (EU) 2016/2031;**
- **Emerging pests**
 - **presenting a risk for (a part of) the Union territory;**
 - **the entry or spread of those pests might have a significant impact for the Union agriculture or forests.**

Prioritisation to those

- belonging to the Priority pest list ([REGULATION \(EU\) 2019/1702](#))
- under emergency measures
- surveyed

ACHIEVEMENTS => EURL websites

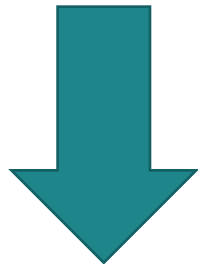
TPs

PTs (1 or 2/y/EURL)

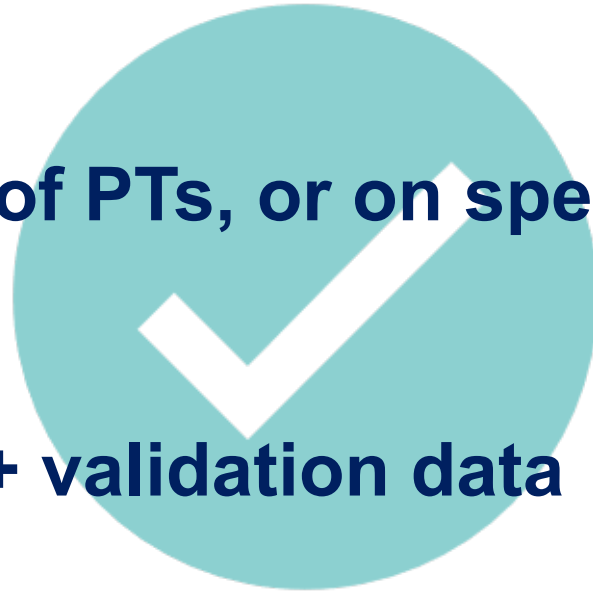
Trainings : follow-up of PTs, or on specific topics

Annual workshops

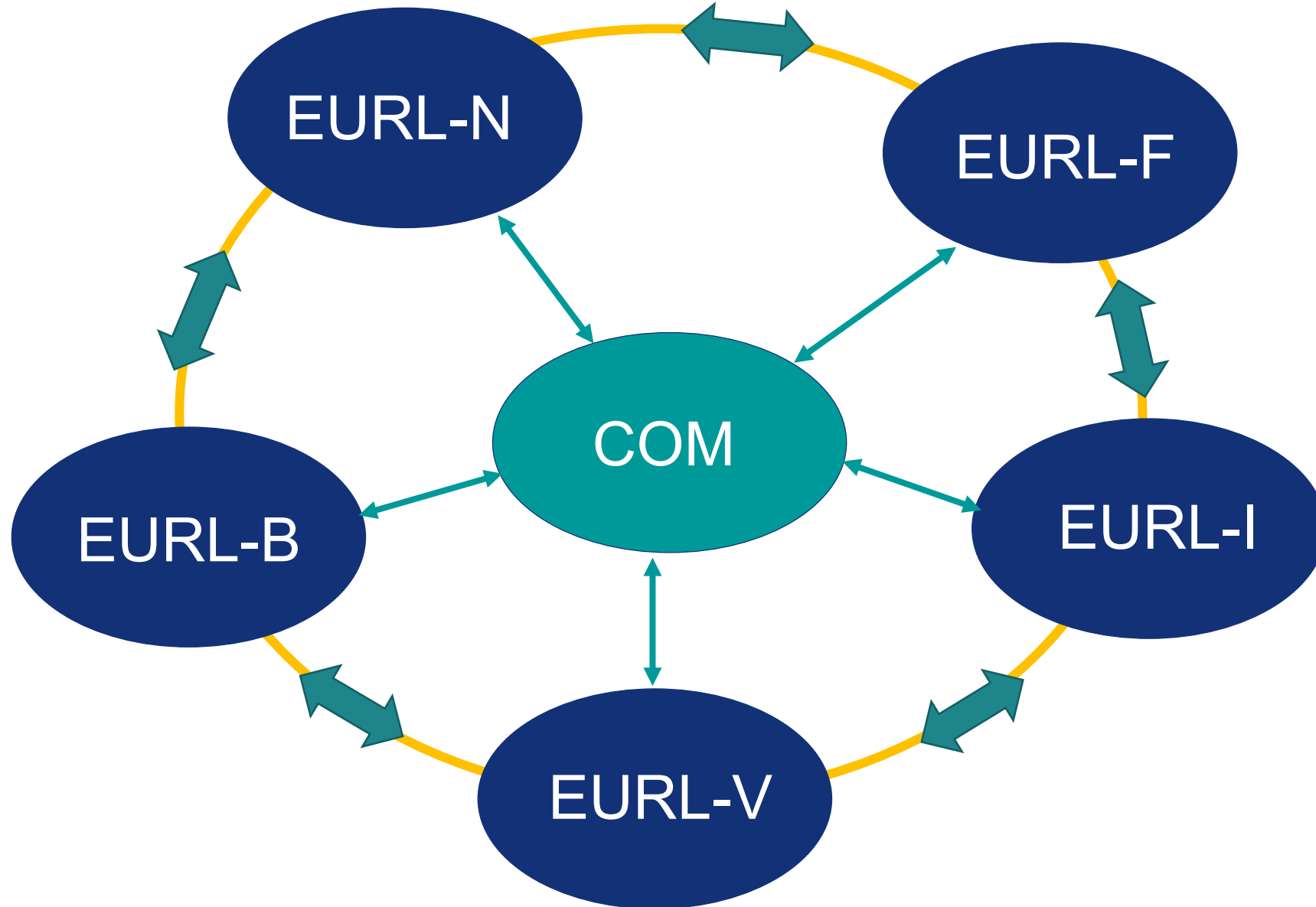
Diagnostic methods + validation data



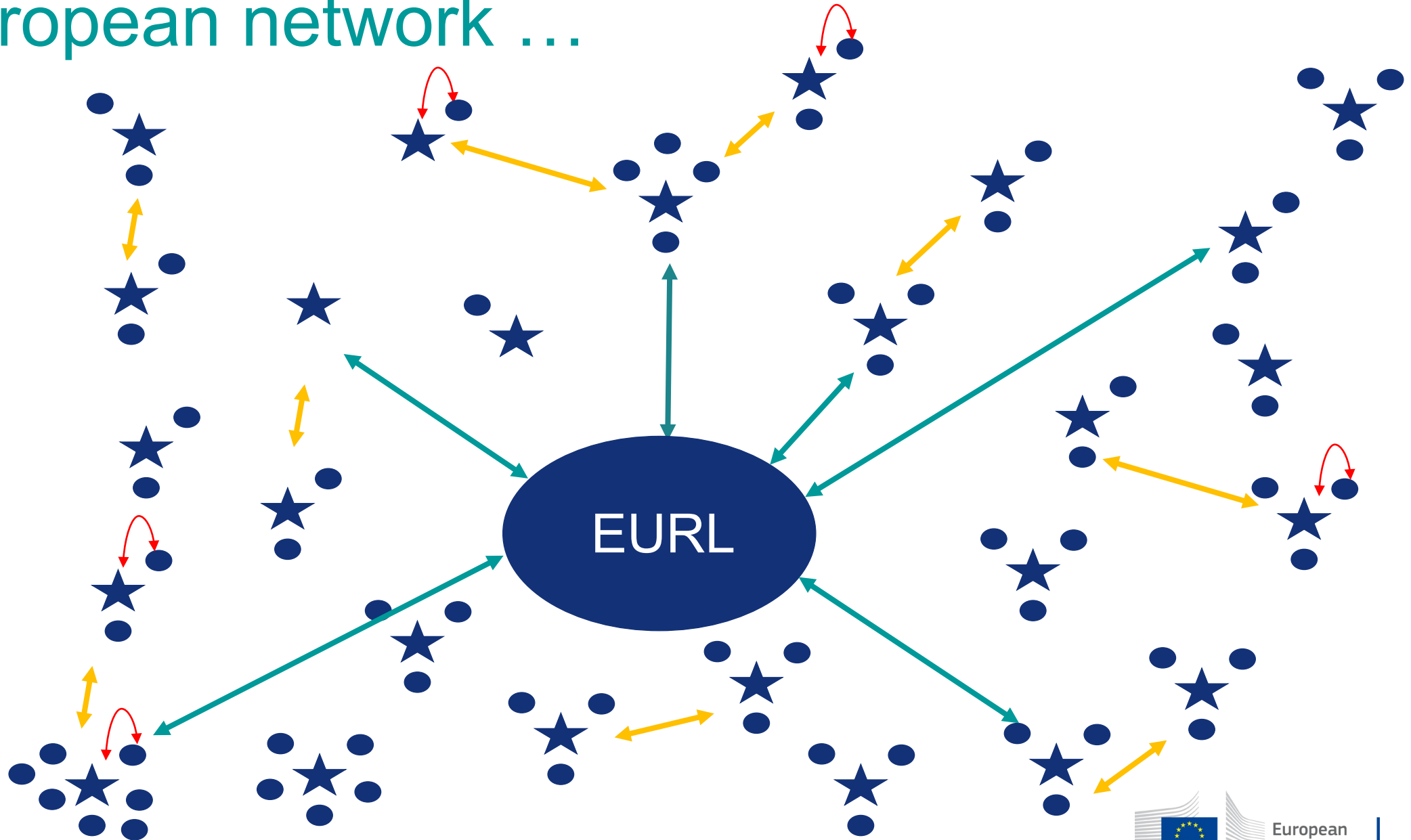
**EPPO synergies : EURL's member in
each diagnostic panel**



A European network ...



A European network ...



... anchored in a worldwide network

**Validation data,
sequences,...
shared (EPPO DB)**

**Trainings
on methods**

**Proficiency
tests**

**Methods publicly
available, published**

**Contribution to intl
diag. standards**

Thank you



London, 21 - 23
September 2022

International Plant Health Conference



Food and Agriculture
Organization of the
United Nations



International
Plant Protection
Convention



Department
for Environment
Food & Rural Affairs



European
Commission